

NOTE:

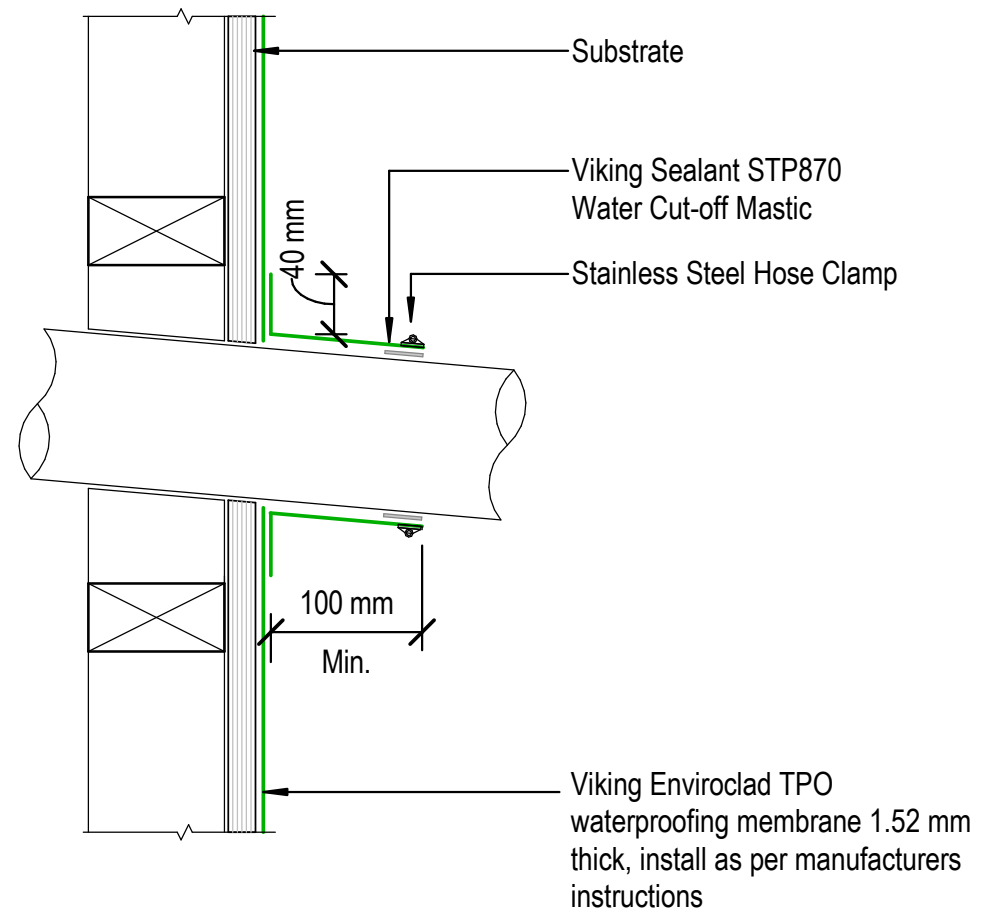
Substrate to comply with current Viking Roofspec Masterspec specification
Substrate Checksheet available from www.vikingroofspec.co.nz

NOTE:

A 5° fall is recommended for pipe penetrations

NOTE:

Membrane is suitable to be installed to pipes that will reach max. temperatures of 70° celcius



DRAWING TITLE

Viking Enviroclad
Penetration_Horizontal pipe

NOTES:

- * Angle fillets are not required at upstands for Enviroclad
- * All fixings, cladding and structure are indicative only unless notated

CodeMark

Cert # GM-CMNZ30058

Cert # BV-CMNZ70176

Enviroclad systems are CodeMarked

DRAWING

INFORMATION ONLY

Scale:

Not to Scale

Date:

23/11/2020

Drawn:

Viking

Detail Ref:

VIK_ENV_005A_HORPIPE

Viking Roofspec
Taking care of detail