

NOTE: It is Viking Roofspecs view that Internal Gutters can be eliminated in many cases. In doing so you could reduce the overall heights or increase roof falls while reducing risk and details. To find out more refer to Detail Notes_Best Practice Design in Membrane Roofing

.55g Metal Angle with Hemmed edges to create solid edge for Viking PIR

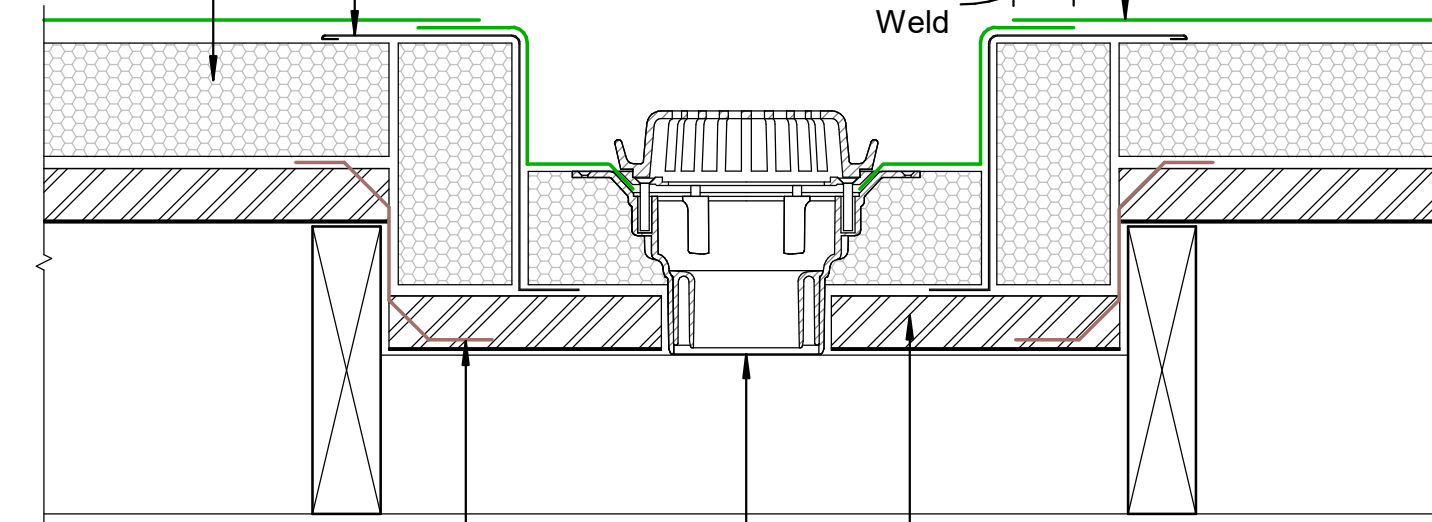
Viking PIR Polyiso Insulation

300mm Min. Gutter width. Falls at 1:100

Refer E2/AS1 paragraphs 8.5.6 and 8.5.10 figures. 64b & 64c

Viking Enviroclad TPO waterproofing membrane 1.52 mm thick, install as per manufacturers instructions

40 mm Weld



Viking Vapour Barrier, install as per manufacturers instructions

Substrate

Viking 80mmØ clamped drain SDM049 with 304 S/S domed grate, installed as per manufacturers instructions.

NOTE: Substrate to comply with current Viking Roofspec Masterspec specification Substrate Checksheet available from www.vikingroofspec.co.nz

DRAWING TITLE

Viking WarmSpan - Enviroclad
Internal Gutter_with outlet

NOTES:

- * Angle fillets are not required at upstands for Enviroclad
- * All fixings, cladding and structure are indicative only unless notated
- * All details to be read in conjunction with Viking Specifications

WarmSpan System is Branz
Appraised - 713

DRAWING

INFORMATION ONLY

Scale:	Date:	Drawn:	Viking
Not to Scale	01/03/2022		

Detail Ref
VIK_WSE_050_GUTTOUTL

Roofspec
Viking
Taking care of detail