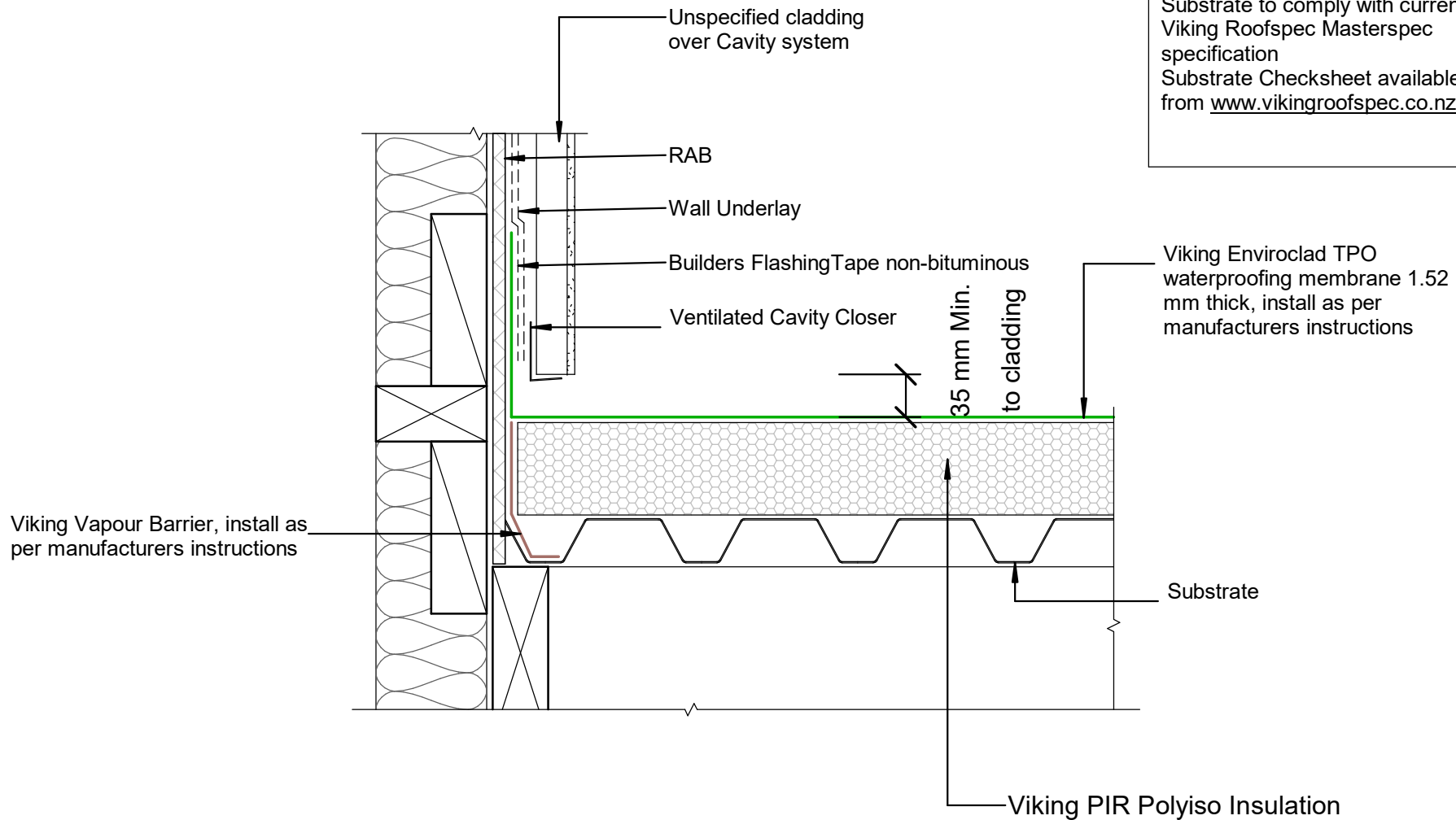


NOTE:
 Substrate to comply with current Viking Roofspec Masterspec specification
 Substrate Checksheet available from www.vikingroofspec.co.nz



DRAWING TITLE

Viking WarmSpan - Enviroclad
 Apron_Upstand to RAB behind cladding

NOTES:

- * Angle fillets are not required at upstands for Enviroclad
- * All fixings, cladding and structure are indicative only unless notated
- * All details to be read in conjunction with Viking Specifications

WarmSpan System is Branz
 Appraised - 713

DRAWING

INFORMATION ONLY

Scale:	Date:	Drawn:	Viking
Not to Scale	01/03/2022		

Detail Ref: **VIK_WSE_080A_APRNURAB**

