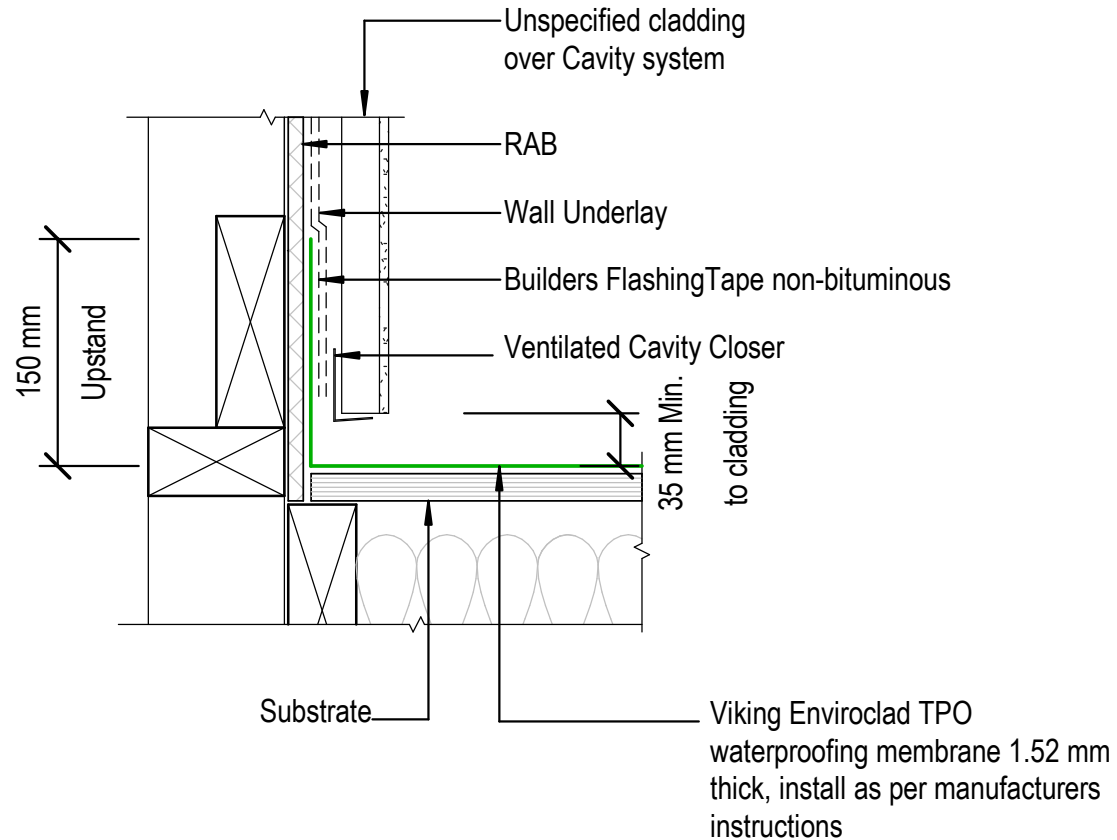


NOTE:  
 Substrate to comply with current  
 Viking Roofspec Masterspec  
 specification  
 Substrate Checksheet available  
 from [www.vikingroofspec.co.nz](http://www.vikingroofspec.co.nz)



DRAWING TITLE

Viking Enviroclad  
 Apron\_Upstand to RAB behind cladding

NOTES:

\* Angle fillets are not required at upstands for Enviroclad  
 \* All fixings, cladding and structure are indicative only unless notated

**CodeMark**

Cert # GM-CMNZ30058  
 Cert # BV-CMNZ70176  
 Enviroclad systems are CodeMarked

DRAWING

INFORMATION ONLY

Scale:	Date:	Drawn:	Viking
Not to Scale	23/11/2020		

Detail Ref: **VIK\_ENV\_080A\_APRNURAB**

**Viking** Roofspec  
 Taking care of detail