

Viking Torch-on Cap sheet
4mm thick, install as per
manufacturers instructions.

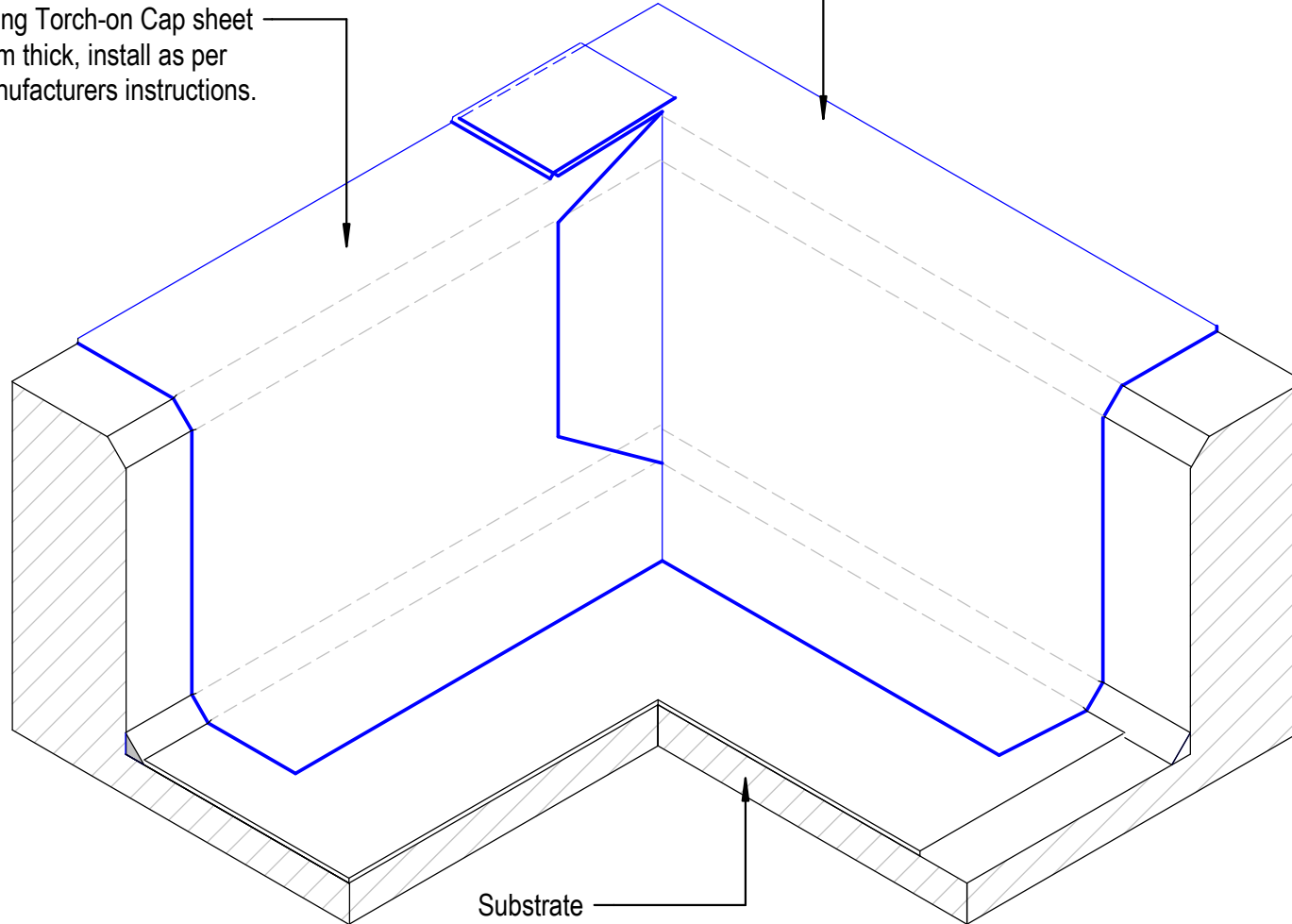
Viking Torch-on Cap sheet 4mm thick,
install as per manufacturers
instructions.

NOTE:
For clarification this detail is repeated
for Base Sheet and Cap Sheet

NOTE:
Internal corner tabs for Cap Sheet
Layer must be installed in the opposite
direction to the Base Sheet Layer

NOTE:
Install a min. 140mm dia. Gusset to
the Fillet at the corner prior to
detailing the Base Sheet Layer

NOTE:
Substrate to comply with current Viking
Roofspec Masterspec specification
Substrate Checksheet available from
www.vikingroofspec.co.nz



Substrate

DRAWING TITLE

Viking Torch-On
Intersection_Internal corner

NOTES:

- Viking Waterproof Membrane as notated can be Viking Gemini, Lybra or Phoenix Super.
- All fixings, cladding and structure are indicative only unless notated.

CodeMark

Cert # GM-CMNZ30092

Cert # BV-CMNZ70171

Viking Torch-On systems are CodeMarked

DRAWING

INFORMATION ONLY

Scale:	Date:	Drawn:	Viking
Not to Scale	23/11/2020		
Detail Ref:			VIK_TOR_061_INTSICNR

Roofspec
Viking
Taking care of detail