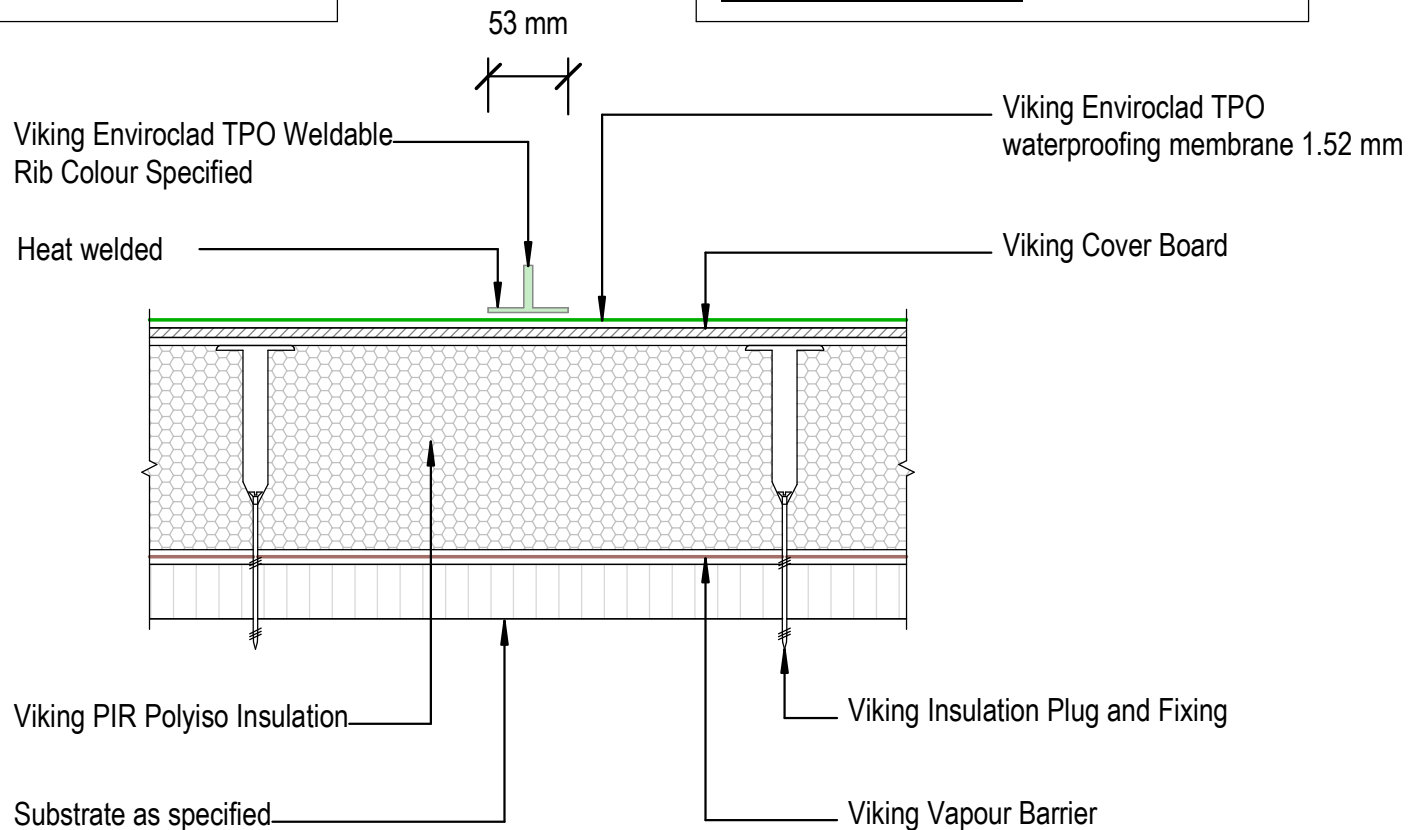


**NOTE:**

TPO Weldable Rib to be Welded directly to Enviroclad TPO membrane, with no penetrations. Ribs can be placed at any point along the roof as long as they don't inhibit watershed

**NOTE:**

Substrate to comply with current Viking Roofspec Masterspec specification  
Substrate Checksheet available from [www.vikingroofspec.co.nz](http://www.vikingroofspec.co.nz)



DRAWING TITLE

Viking WS2 - Enviroclad  
Accessories\_Enviroclad TPO Weldable Rib

NOTES:

- \* Angle fillets are not required at upstands for Enviroclad
- \* All fixings, cladding and structure are indicative only unless noted
- \* All details to be read in conjunction with Viking Specifications

Substrate and structure are indicative only

DRAWING STATUS

INFORMATION ONLY

Scale:  
Not to Scale

Date:  
01/10/2022

Drawn:

Viking

Detail Ref: **VIK\_WS2\_ENV\_120\_ACCTPOWR**

Roofspec  
**Viking**  
Taking care of detail