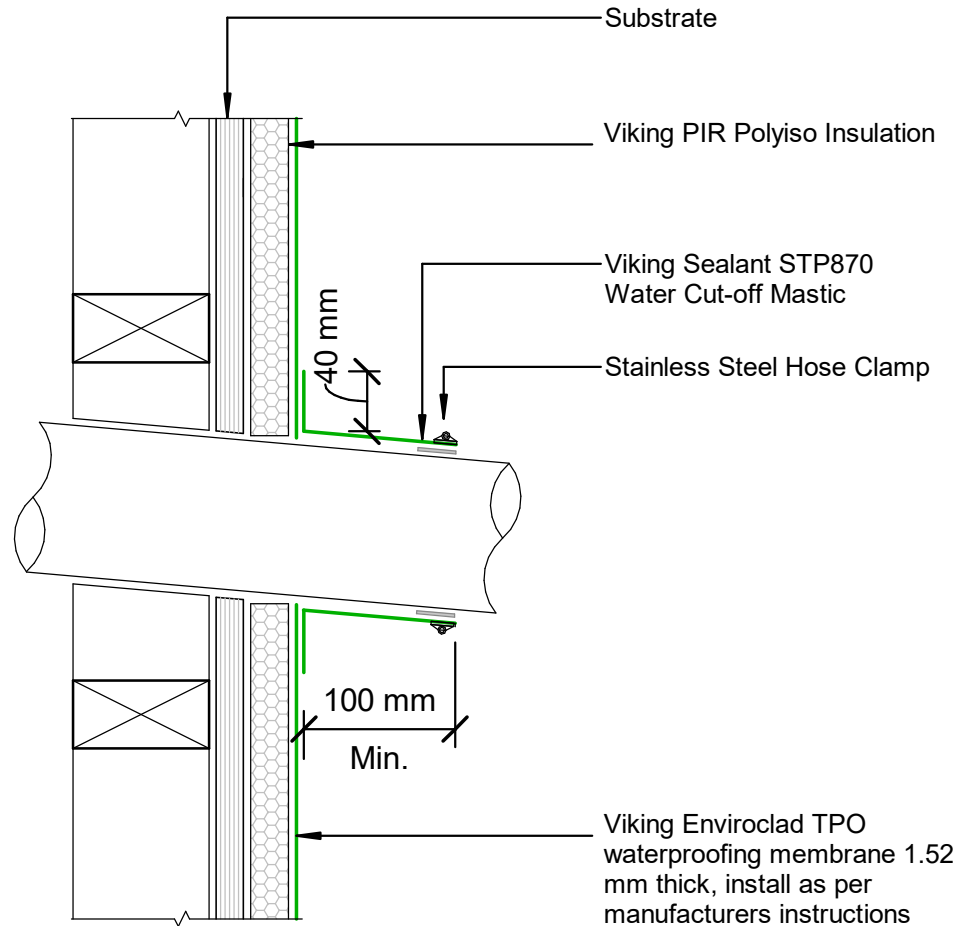


NOTE:
 Substrate to comply with current Viking Roofspec
 Masterspec specification
 Substrate Checksheet available from
www.vikingroofspec.co.nz

NOTE:
 A 5° fall is recommended for pipe penetrations

NOTE:
 Membrane is suitable to be installed to pipes that will
 reach max. temperatures of 70° celcius



DRAWING TITLE

Viking WarmRoof - Enviroclad
Penetration_Horizontal pipe

NOTES:

- * Angle fillets are not required at upstands for Enviroclad
- * All fixings, cladding and structure are indicative only unless noted
- * All details to be read in conjunction with Viking Specifications

WarmRoof System is Branz
Appraised - 713

DRAWING

INFORMATION ONLY

Scale:	Date:	Drawn:	Viking
Not to Scale	01/03/2022		

Detail Ref
VIK_WRE_005A_HORPIPE

Roofspec
Viking
 Taking care of detail