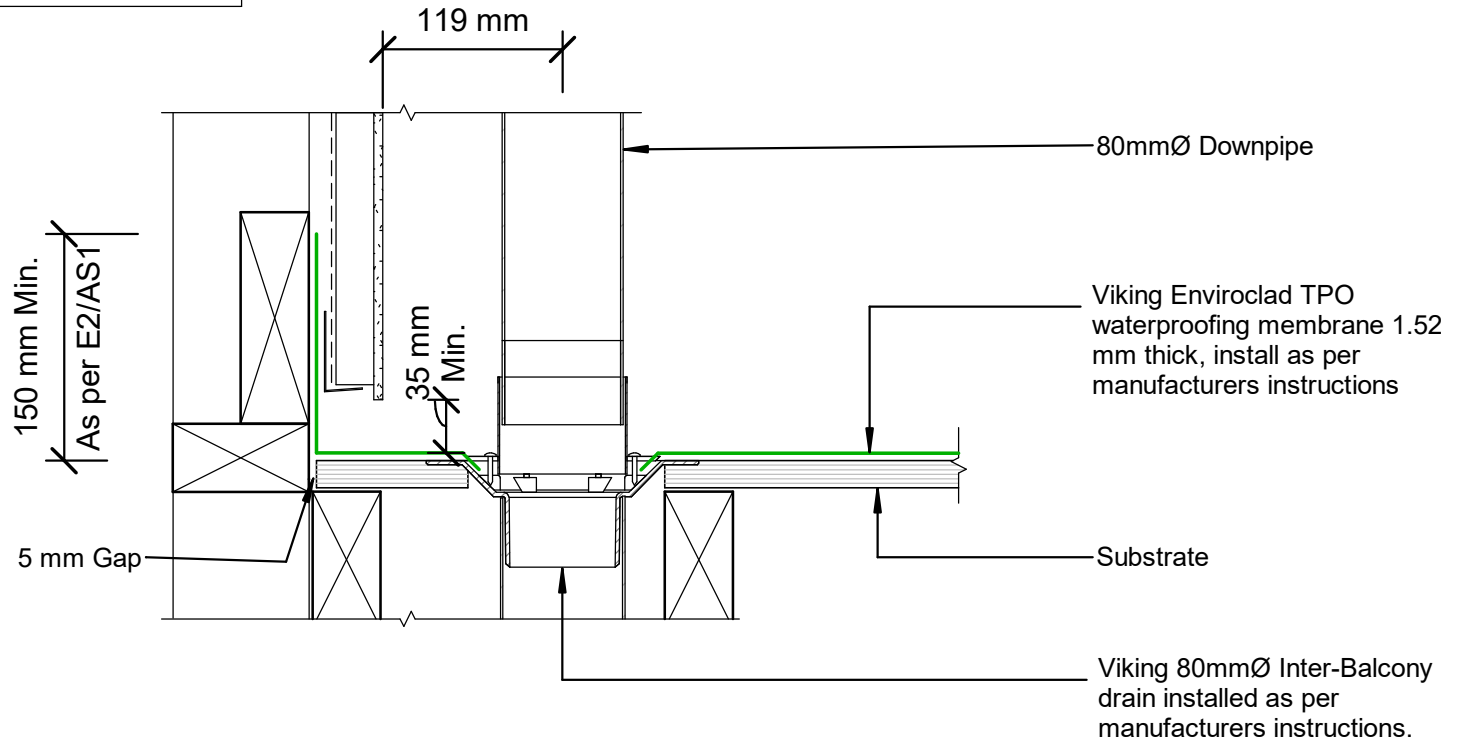


NOTE:  
 Substrate to comply with current Viking Roofspec  
 Masterspec specification  
 Substrate Checksheet available from  
[www.vikingroofspec.co.nz](http://www.vikingroofspec.co.nz)

NOTE:  
 Inter-Balcony drains are available in the following  
 outlet diameter sizes:  
 65mm / 80mm / 100mm / 150mm



DRAWING TITLE

Viking Enviroclad  
 Penetration\_Balcony Drain 80mm

NOTES:

\* Angle fillets are not required at  
 upstands for Enviroclad  
 \* All fixings, cladding and structure are  
 indicative only unless notated



Enviroclad  
 systems are  
 CodeMarked

DRAWING

INFORMATION ONLY

|                        |                     |                  |
|------------------------|---------------------|------------------|
| Scale:<br>Not to Scale | Date:<br>23/11/2020 | Drawn:<br>Viking |
|------------------------|---------------------|------------------|

Detail Ref: **VIK\_ENV\_002\_PENEBALC**