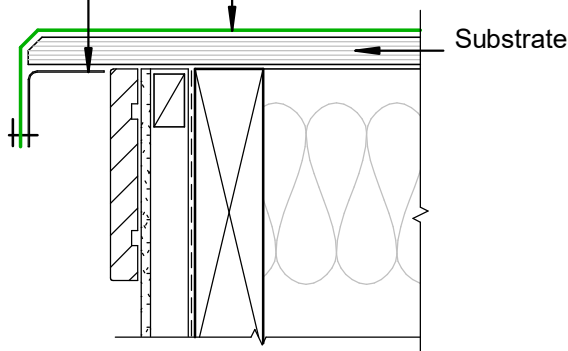


**A**

Alum or S/S Angle 50x50mm x 1.6mm or thicker. Use fixing bar to secure membrane to drip-edge

Viking Enviroclad TPO waterproofing membrane 1.52 mm thick, install as per manufacturers instructions

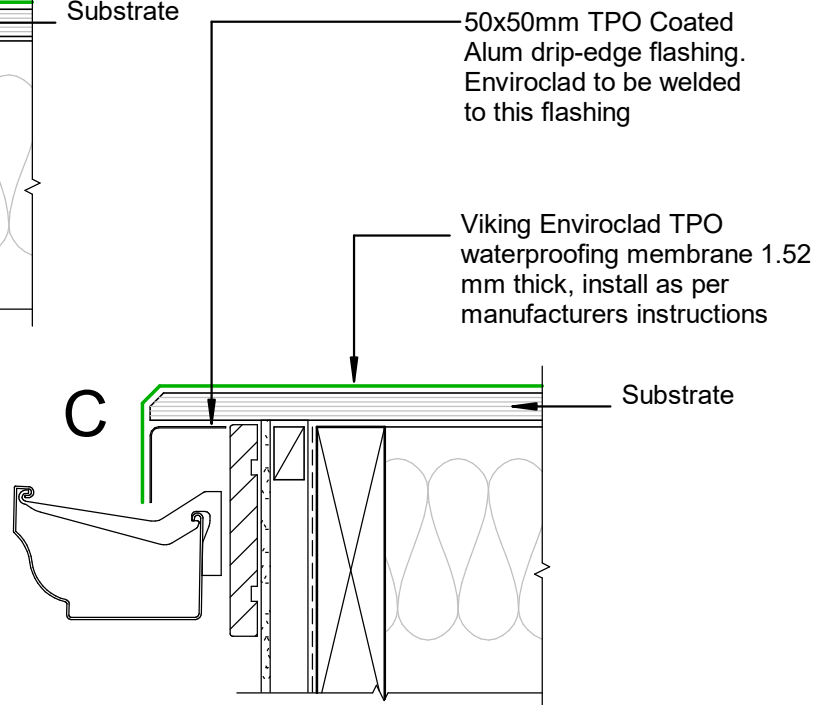
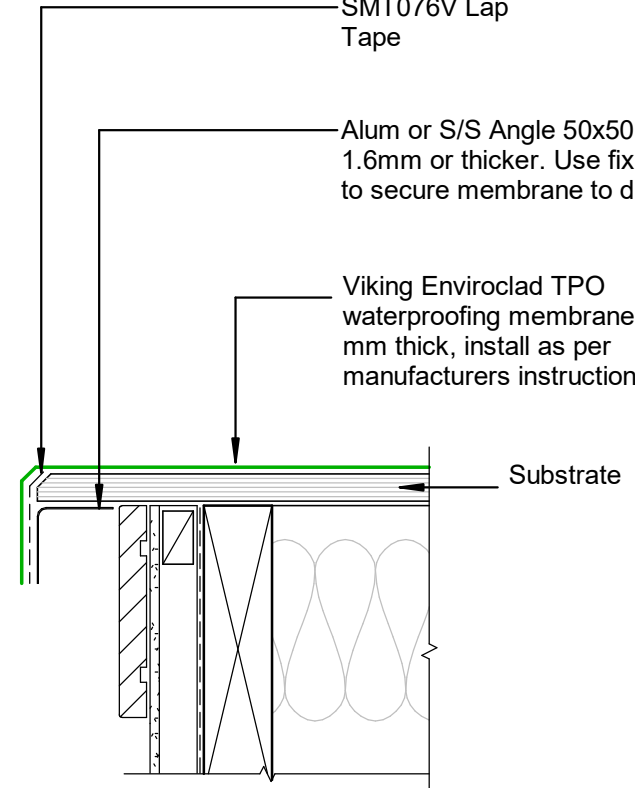


**B**

SMT076V Lap Tape

Alum or S/S Angle 50x50mm x 1.6mm or thicker. Use fixing bar to secure membrane to drip-edge

Viking Enviroclad TPO waterproofing membrane 1.52 mm thick, install as per manufacturers instructions



**NOTE:**  
 Substrate to comply with current Viking Roofspec Masterspec specification  
 Substrate Checksheet available from [www.vikingroofspec.co.nz](http://www.vikingroofspec.co.nz)

DRAWING TITLE

Viking Enviroclad  
 Verge\_Drip edge to External Spouting

NOTES:

\* Angle fillets are not required at upstands for Enviroclad  
 \* All fixings, cladding and structure are indicative only unless notated



Enviroclad systems are CodeMarked

DRAWING

INFORMATION ONLY

Scale:	Date:	Drawn:	Viking
Not to Scale	23/11/2020		
Detail Ref:			

**VIK\_ENV\_032\_VERGDRIP**

