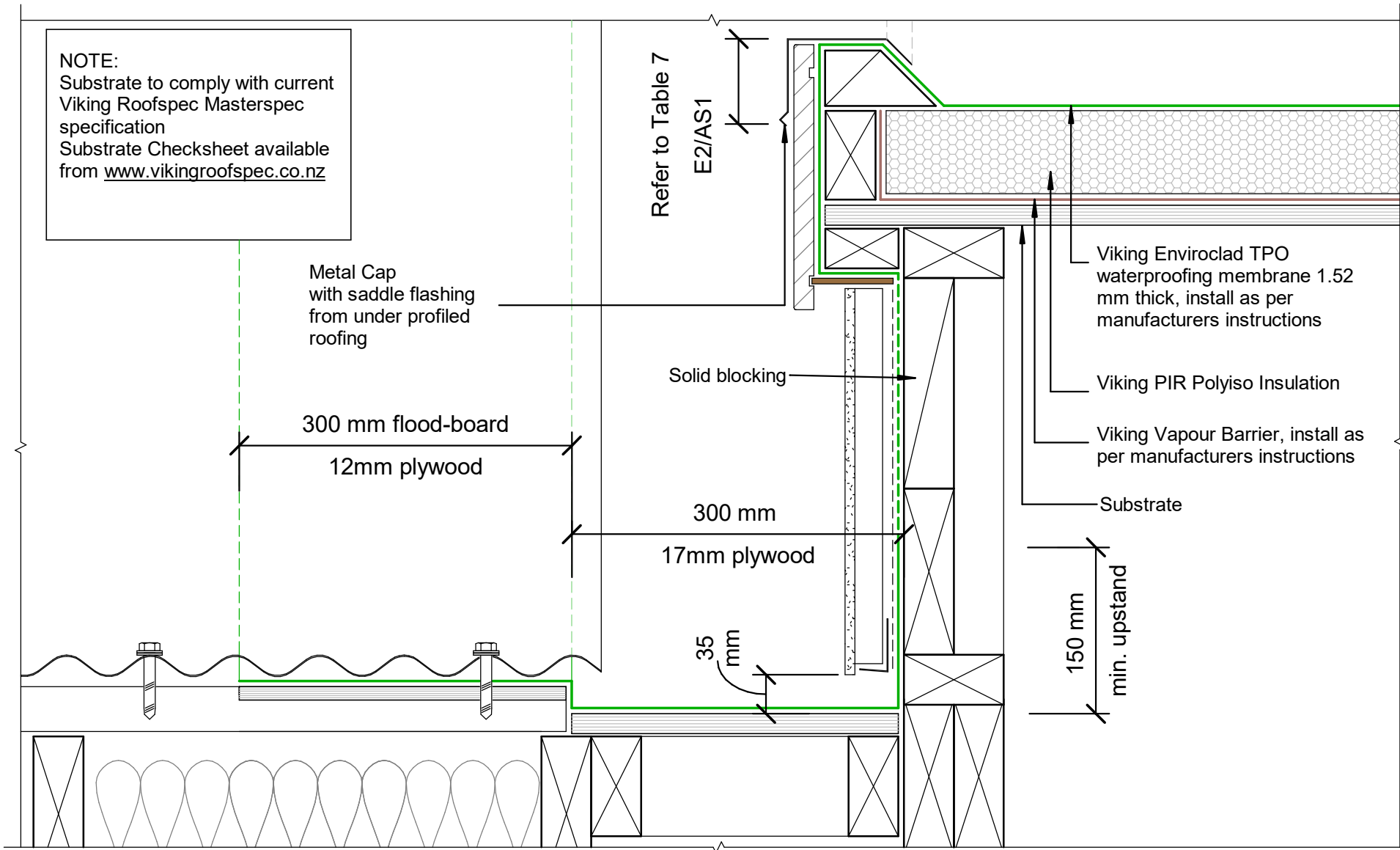


**NOTE:**  
 Substrate to comply with current  
 Viking Roofspec Masterspec  
 specification  
 Substrate Checksheet available  
 from [www.vikingroofspec.co.nz](http://www.vikingroofspec.co.nz)



DRAWING TITLE

Viking WarmRoof - Enviroclad  
 Roof Junction\_Dormer Gutter

NOTES:

- \* Angle fillets are not required at upstands for Enviroclad
- \* All fixings, cladding and structure are indicative only unless noted
- \* All details to be read in conjunction with Viking Specifications

WarmRoof System is Branz  
 Appraised - 713

DRAWING

INFORMATION ONLY

Scale:	Date:	Drawn:	Viking
Not to Scale	01/03/2022		

Detail Ref: **VIK\_WRE\_074A\_RJNDORM**

