

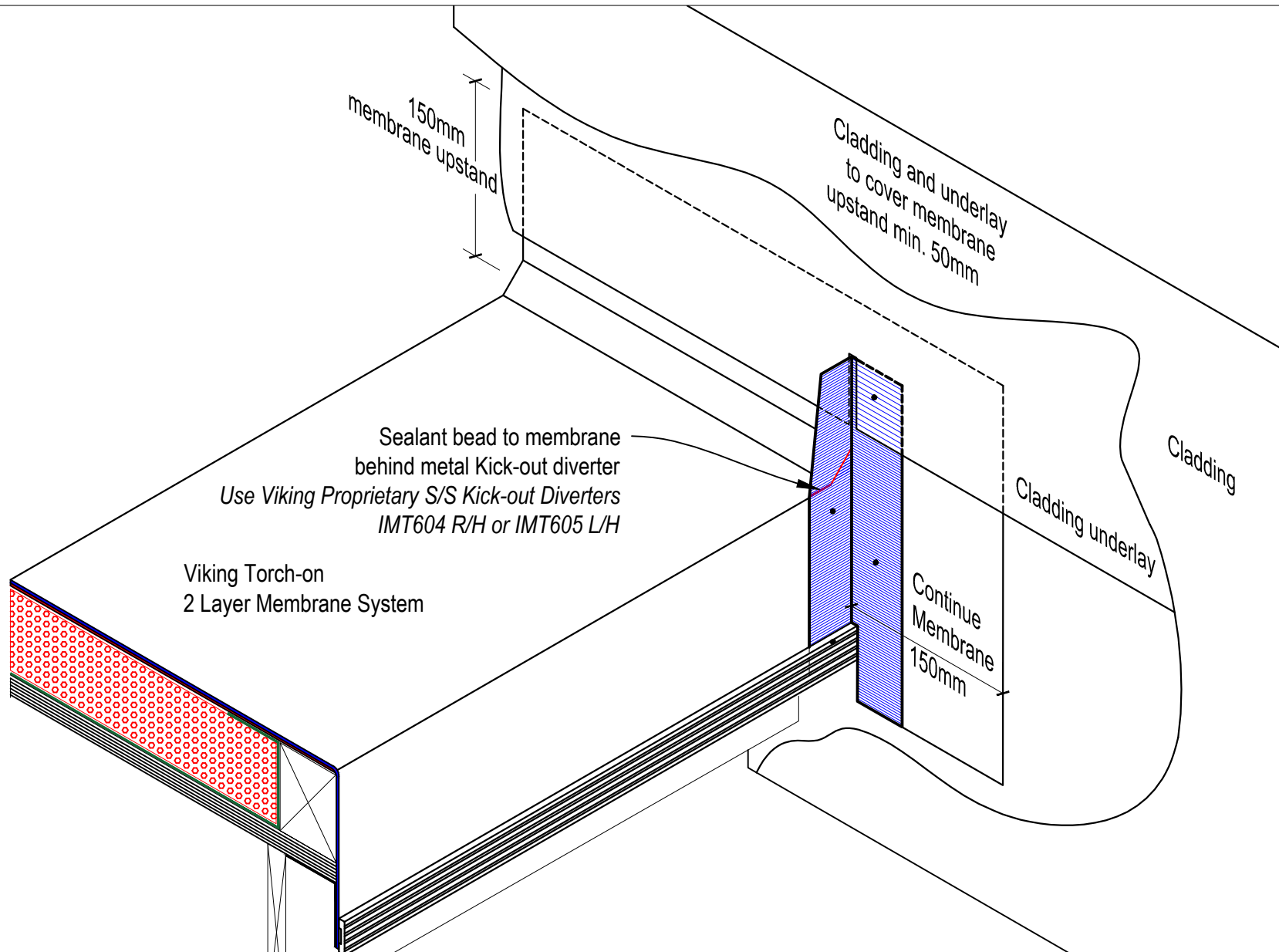
NOTE:
The following details are advice for detailing of the Viking WarmRoof System specifically. For further waterproofing details refer to the Typical Details of the Viking Waterproofing System that you are specifying.



DRAWING TITLE
Viking WarmRoof with Viking Torch-on 2 layer membrane System Drip edge Detail

NOTES:
1/ Substrate is Indicative Only. 2/ Refer Viking Torch-on details for further waterproofing info.

DRAWING STATUS		
INFORMATION ONLY		
Not to Scale	DATE 28/5/2018	Detail Ref.
DRAWN	Viking Roofspec	VWR01VT
SERIES	1.10	



Sealant bead to membrane behind metal Kick-out diverter
 Use Viking Proprietary S/S Kick-out Diverters
 IMT604 R/H or IMT605 L/H

Viking Torch-on
 2 Layer Membrane System

Cladding and underlay
 to cover membrane
 upstand min. 50mm

Cladding
 Cladding underlay

Continue
 Membrane
 150mm

DRAWING TITLE

Viking WarmRoof with Viking Torch-on 2 layer membrane System
 Drip edge Diverter Detail

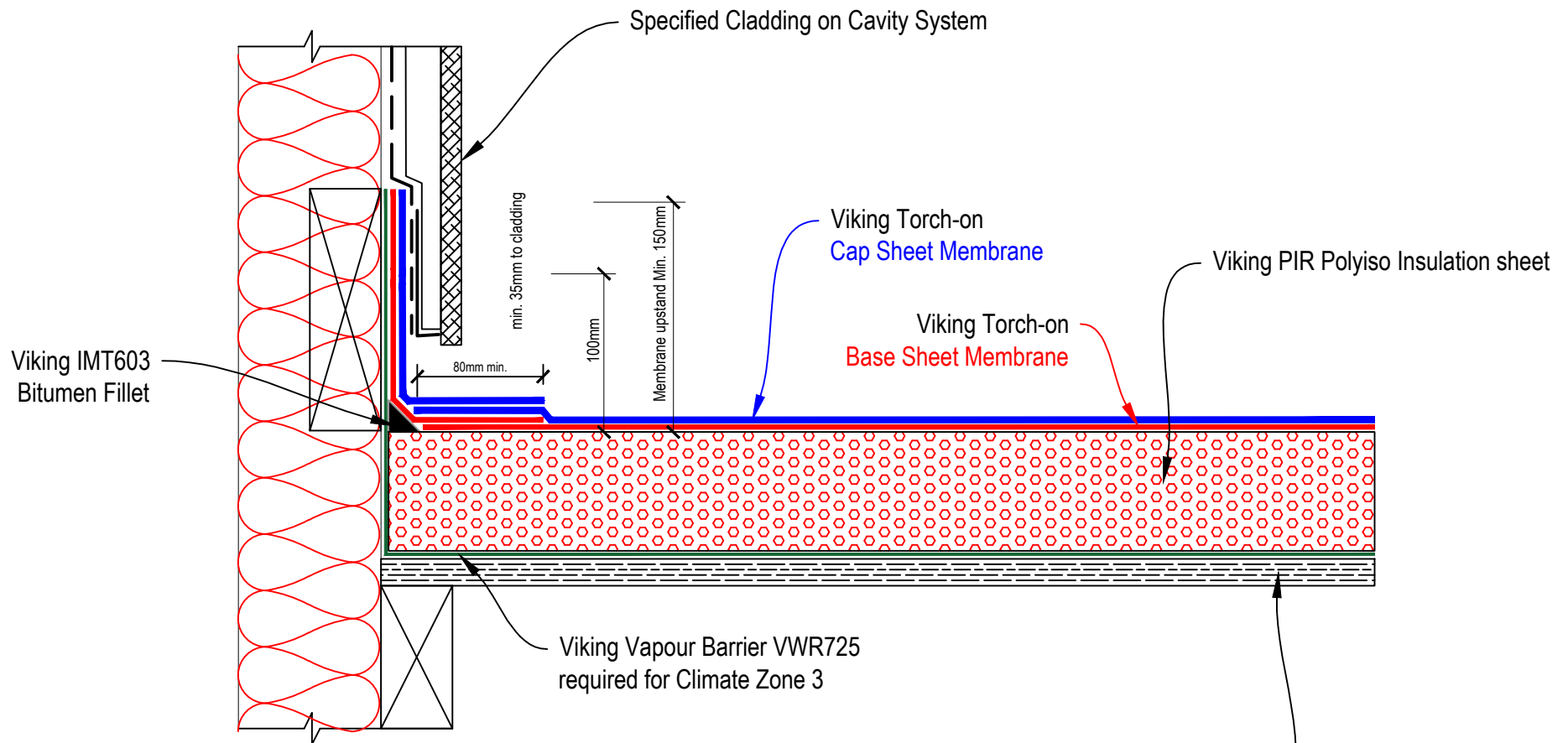
NOTES:

- 1/ Substrate is Indicative Only.
- 2/ Refer Viking Torch-on details for further waterproofing info.

DRAWING STATUS

INFORMATION ONLY

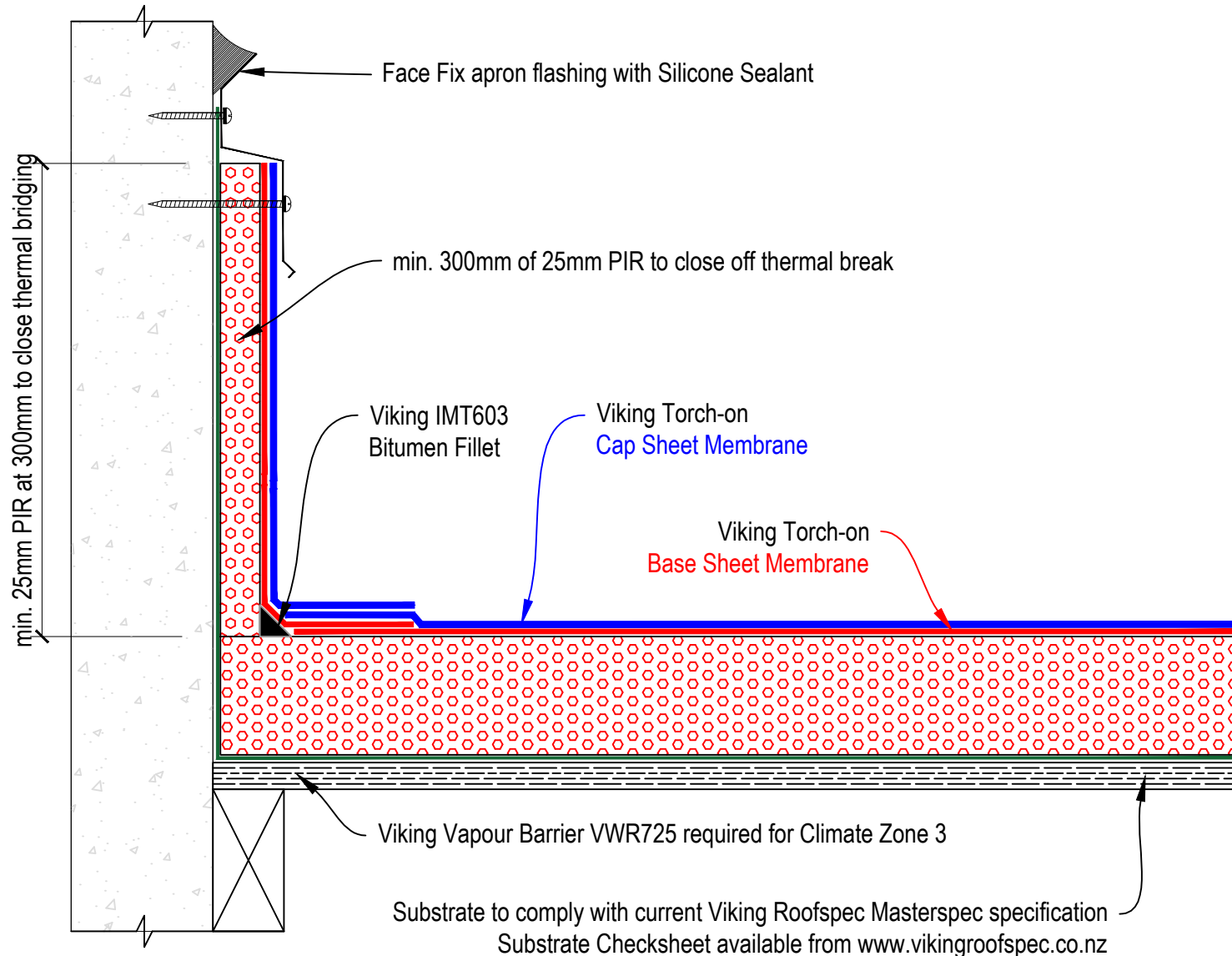
Not to Scale	DATE 28/5/2018	Detail Ref.
DRAWN	Viking Roofspec	VWR02VT
SERIES	1.10	



Substrate to comply with current Viking Roofspec Masterspec specification
 Substrate Checksheet available from www.vikingroofspec.co.nz



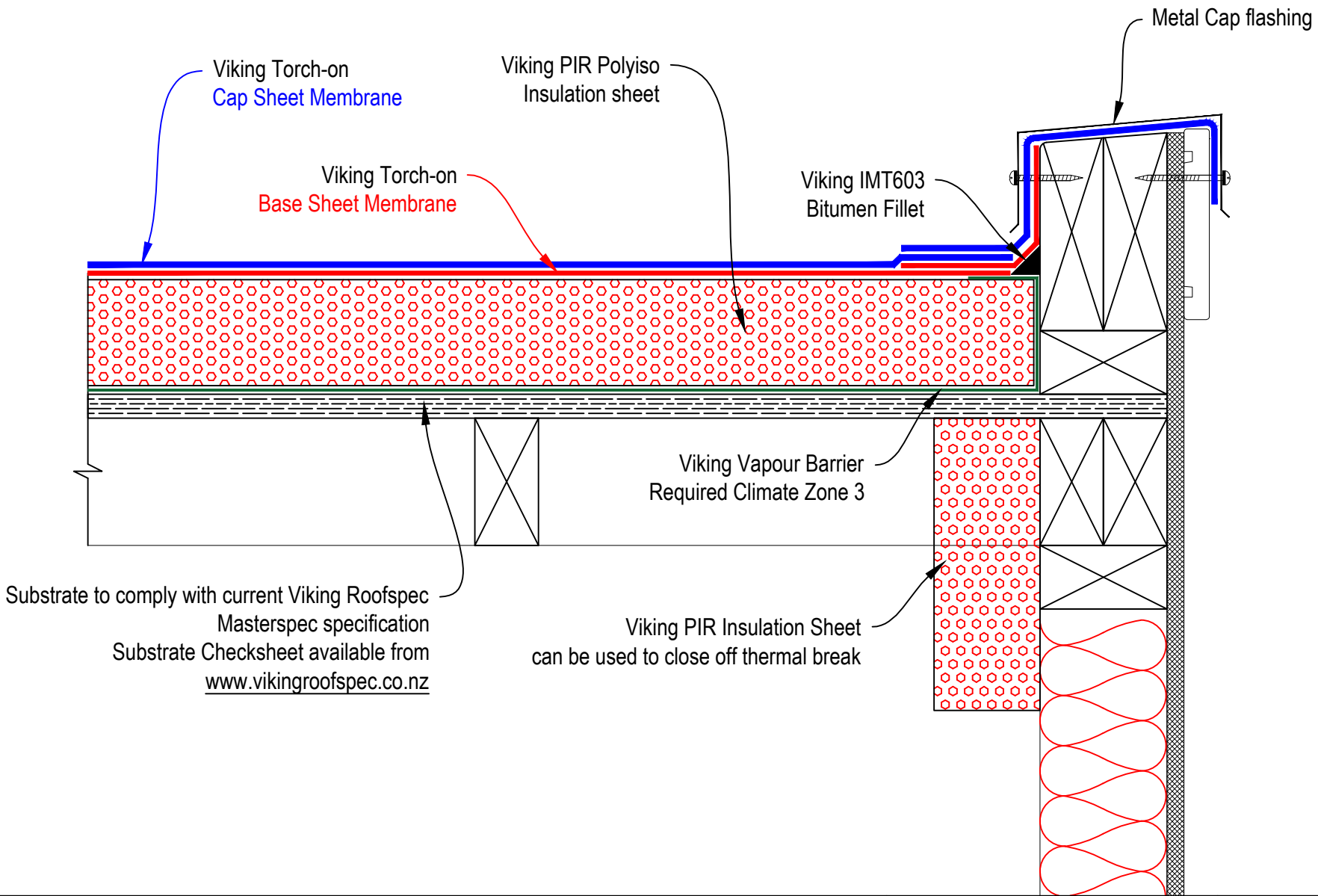
DRAWING TITLE		NOTES:	DRAWING STATUS	
Viking WarmRoof with Viking Torch-on 2 layer membrane System Upstand behind Cladding		1/ Substrate is Indicative Only. 2/ Refer Viking Torch-on details for further waterproofing info.	INFORMATION ONLY	
Not to Scale	DATE 28/5/2018	Detail Ref.		
DRAWN	Viking Roofspec	VWR03VT		
SERIES	1.10			



DRAWING TITLE
Viking WarmRoof with Viking Torch-on 2 layer membrane System Face fixed Upstand

NOTES:
1/ Substrate is Indicative Only. 2/ Refer Viking Torch-on details for further waterproofing info.

DRAWING STATUS		
INFORMATION ONLY		
Not to Scale	DATE 28/5/2018	Detail Ref.
DRAWN	Viking Roofspec	VWR04VT
SERIES	1.10	



Substrate to comply with current Viking Roofspec Masterspec specification
 Substrate Checksheet available from www.vikingroofspec.co.nz

Viking PIR Insulation Sheet can be used to close off thermal break

Viking Vapour Barrier Required Climate Zone 3

Viking IMT603 Bitumen Fillet

Viking Torch-on Base Sheet Membrane

Viking Torch-on Cap Sheet Membrane

Viking PIR Polyiso Insulation sheet

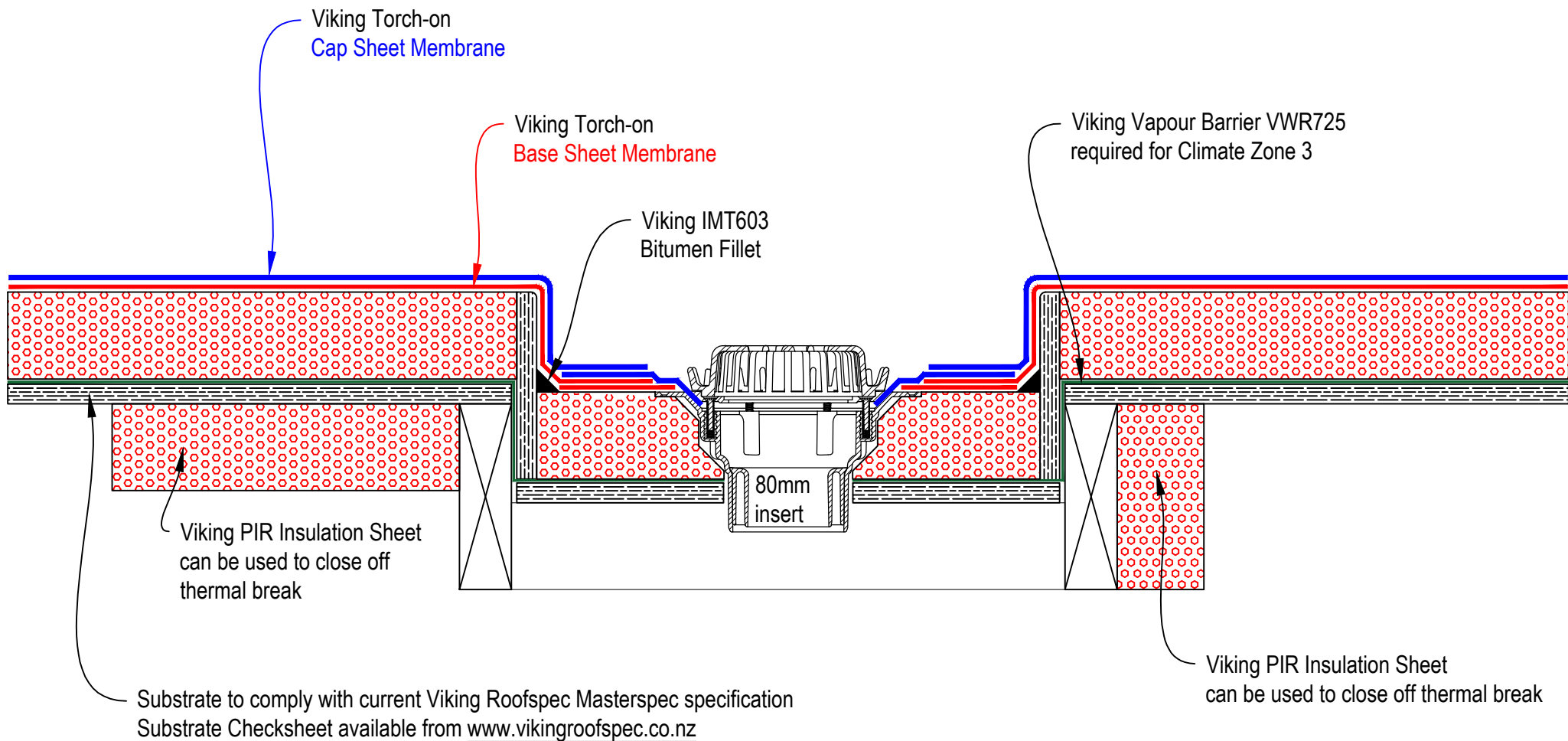
Metal Cap flashing



DRAWING TITLE
Viking WarmRoof with Viking Torch-on 2 layer membrane System Parapet

NOTES:
1/ Substrate is Indicative Only. 2/ Refer Viking Torch-on details for further waterproofing info.

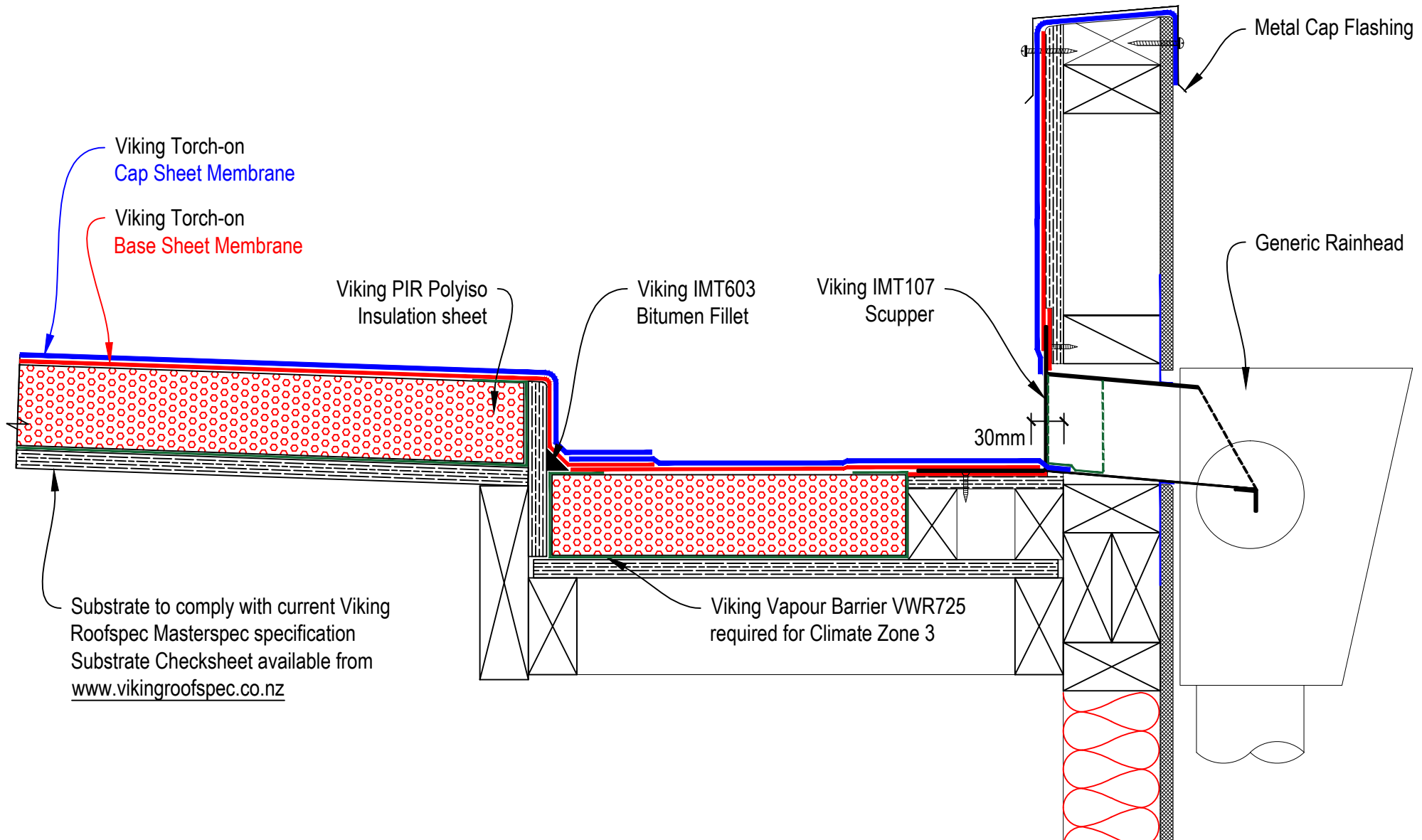
DRAWING STATUS		
INFORMATION ONLY		
Not to Scale	DATE 28/5/2018	Detail Ref.
DRAWN	Viking Roofspec	VWR05VT
SERIES	1.10	



DRAWING TITLE
Viking WarmRoof with Viking Torch-on 2 layer membrane System Internal Gutter with Clamped Outlet or Overflow

NOTES:
1/ Substrate is Indicative Only. 2/ Refer Viking Torch-on details for further waterproofing info.

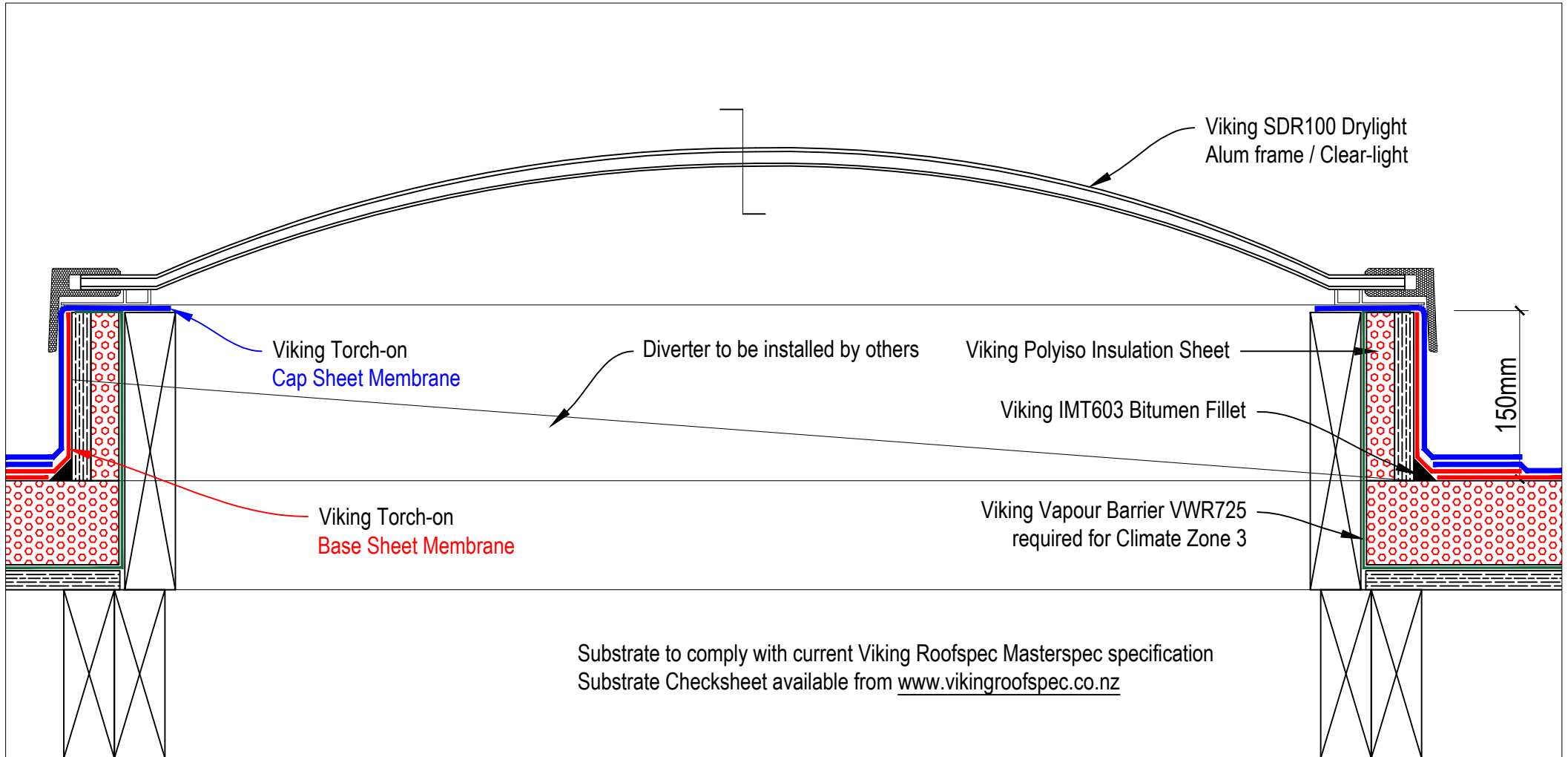
DRAWING STATUS		
INFORMATION ONLY		
Not to Scale	DATE 28/5/2018	Detail Ref.
DRAWN	Viking Roofspec	VWR06VT
SERIES	1.10	



DRAWING TITLE
Viking WarmRoof with Viking Torch-on 2 layer membrane System Scupper Outlet

NOTES:
1/ Substrate is Indicative Only. 2/ Refer Viking Torch-on details for further waterproofing info.

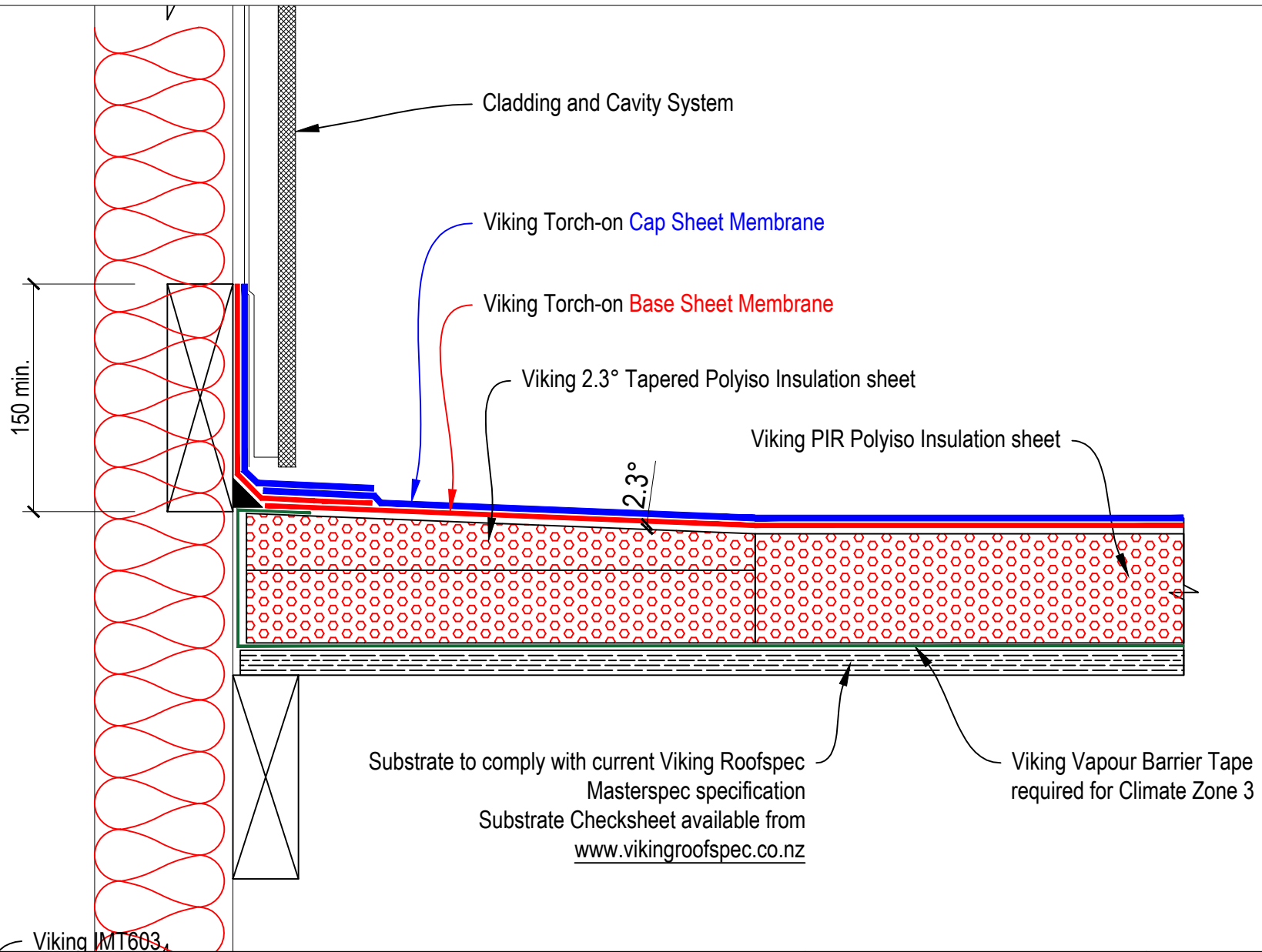
DRAWING STATUS		
INFORMATION ONLY		
Not to Scale	DATE 28/5/2018	Detail Ref.
DRAWN	Viking Roofspec	VWR07VT
SERIES	1.10	



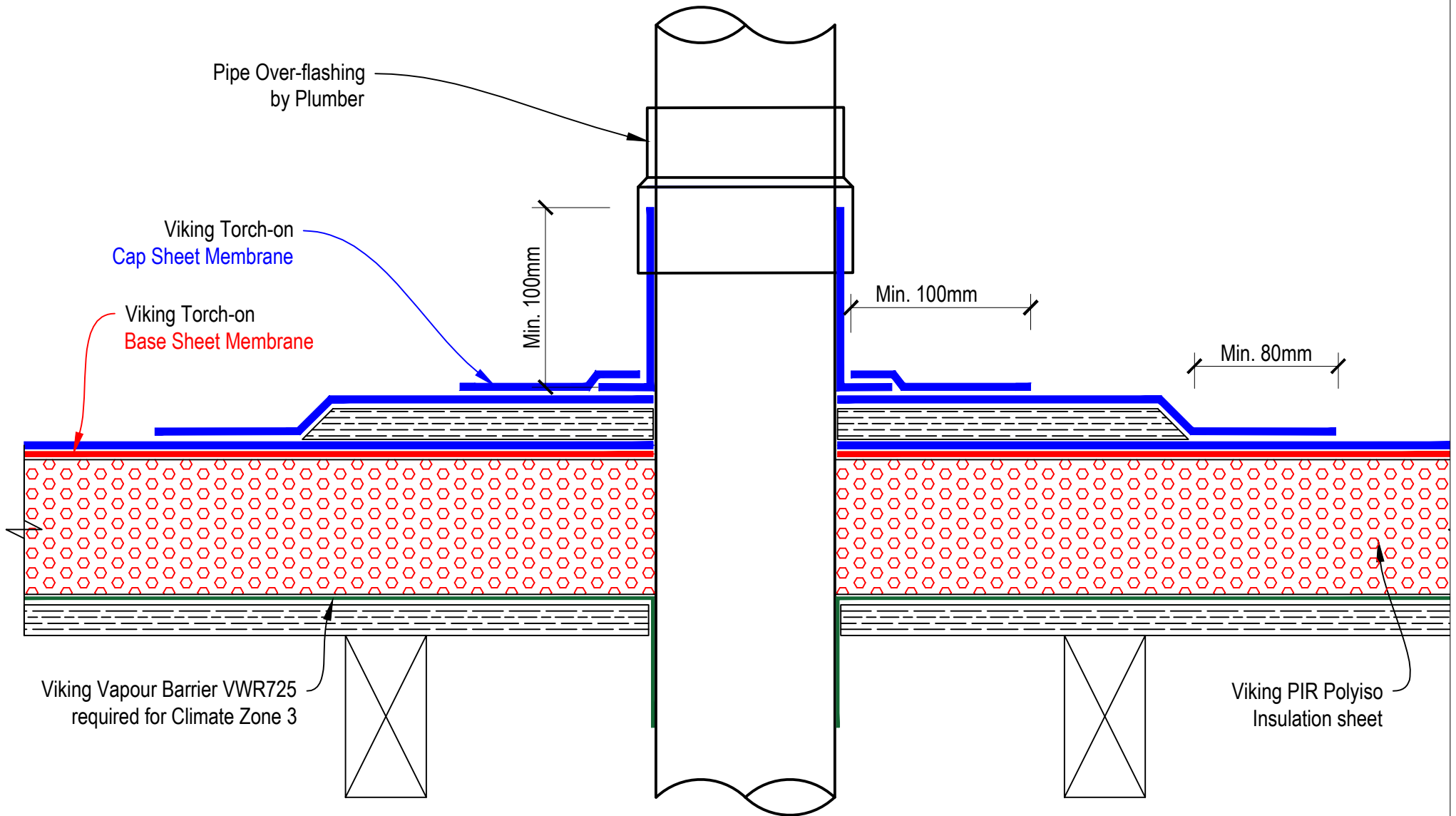
DRAWING TITLE
Viking WarmRoof with Viking Torch-on 2 layer membrane System Skylight

NOTES:
1/ Substrate is Indicative Only. 2/ Refer Viking Torch-on details for further waterproofing info.

DRAWING STATUS		
INFORMATION ONLY		
Not to Scale	DATE 28/5/2018	Detail Ref.
DRAWN	Viking Roofspec	VWR08VT
SERIES	1.10	



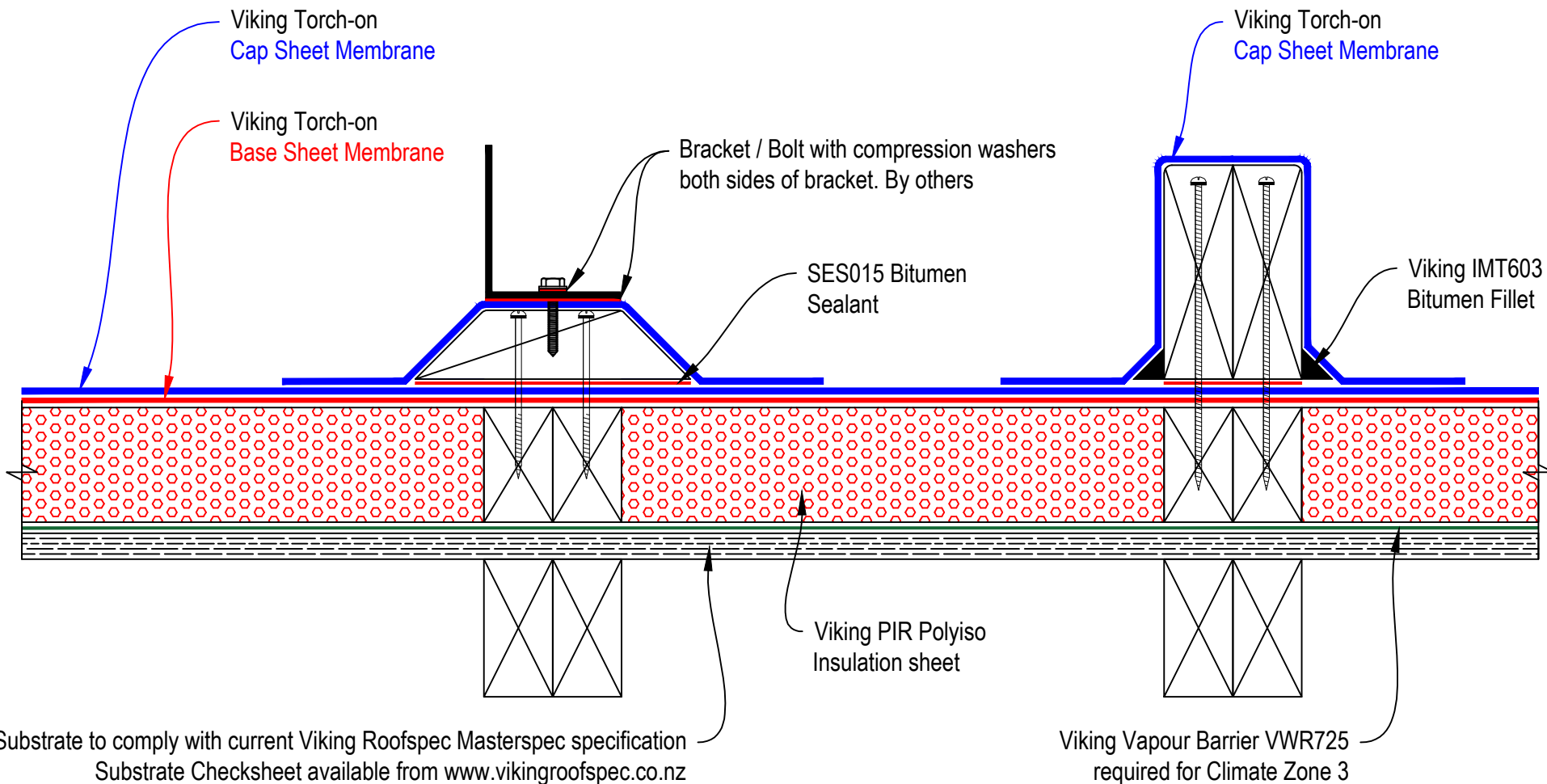
DRAWING TITLE		NOTES:		DRAWING STATUS	
Viking WarmRoof with Viking Torch-on 2 layer membrane System Cricket to diverter water with PIR sheet		1/ Substrate is Indicative Only. 2/ Refer Viking Torch-on details for further waterproofing info.		INFORMATION ONLY	
Not to Scale	DATE 28/5/2018	Detail Ref.			
DRAWN	Viking Roofspec	VWR09VT			
SERIES	1.10				



DRAWING TITLE
Viking WarmRoof with Viking Torch-on 2 layer membrane System Pipe penetration

NOTES:
1/ Substrate is Indicative Only. 2/ Refer Viking Torch-on details for further waterproofing info.

DRAWING STATUS		
INFORMATION ONLY		
Not to Scale	DATE 28/5/2018	Detail Ref.
DRAWN	Viking Roofspec	VWR10VT
SERIES	1.10	

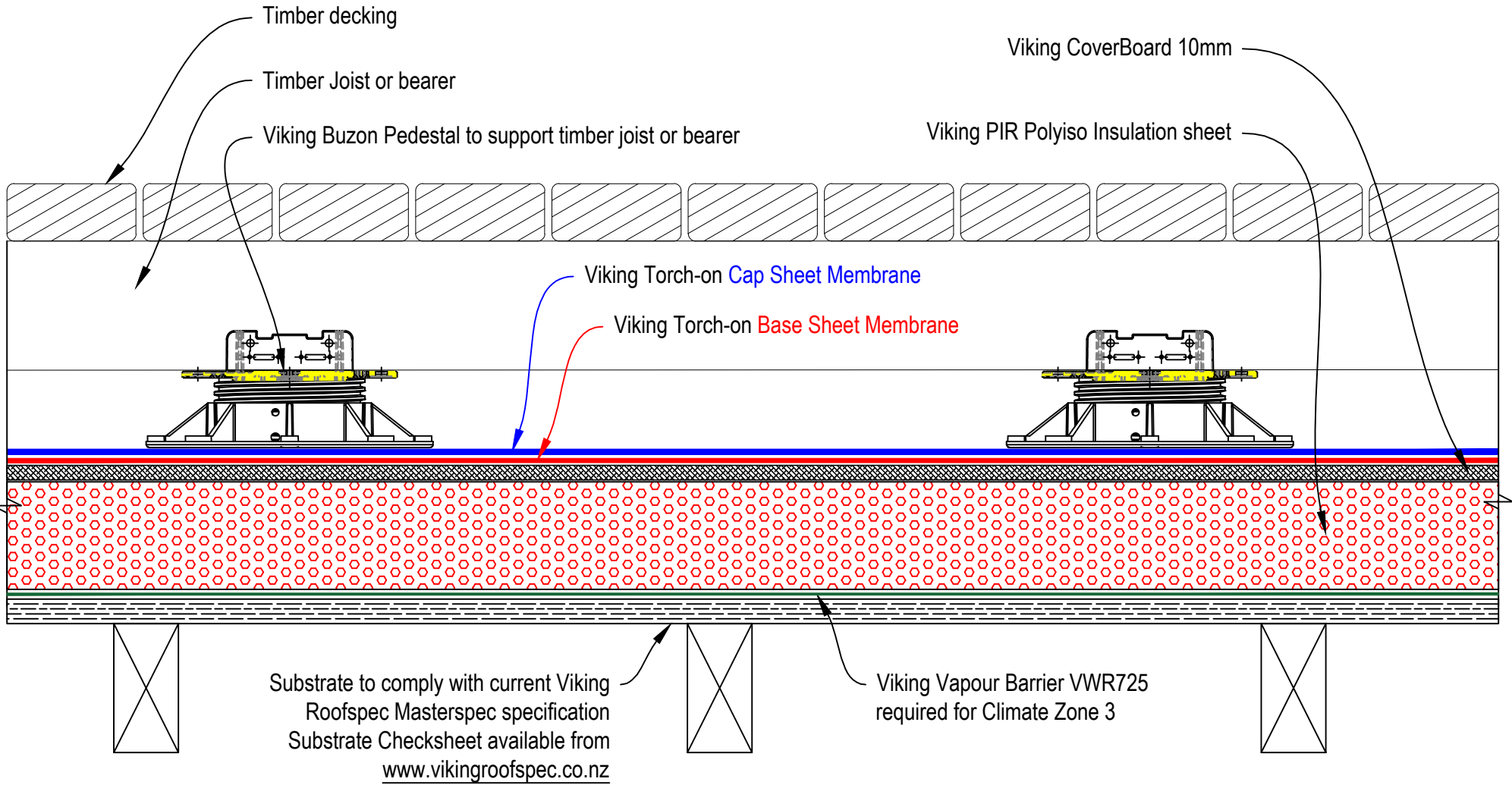


DRAWING TITLE
Viking WarmRoof with Viking Torch-on 2 layer membrane System Plinths

NOTES:
1/ Substrate is Indicative Only. 2/ Refer Viking Torch-on details for further waterproofing info.

DRAWING STATUS		
INFORMATION ONLY		
Not to Scale	DATE 28/5/2018	Detail Ref.
DRAWN	Viking Roofspec	VWR11VT
SERIES	1.10	

Note: For floating trafficable decks install Viking Cover-board between PIR insulation and membrane.



Substrate to comply with current Viking
Roofspec Masterspec specification
Substrate Checksheet available from
www.vikingroofspec.co.nz

Viking Vapour Barrier VWR725
required for Climate Zone 3

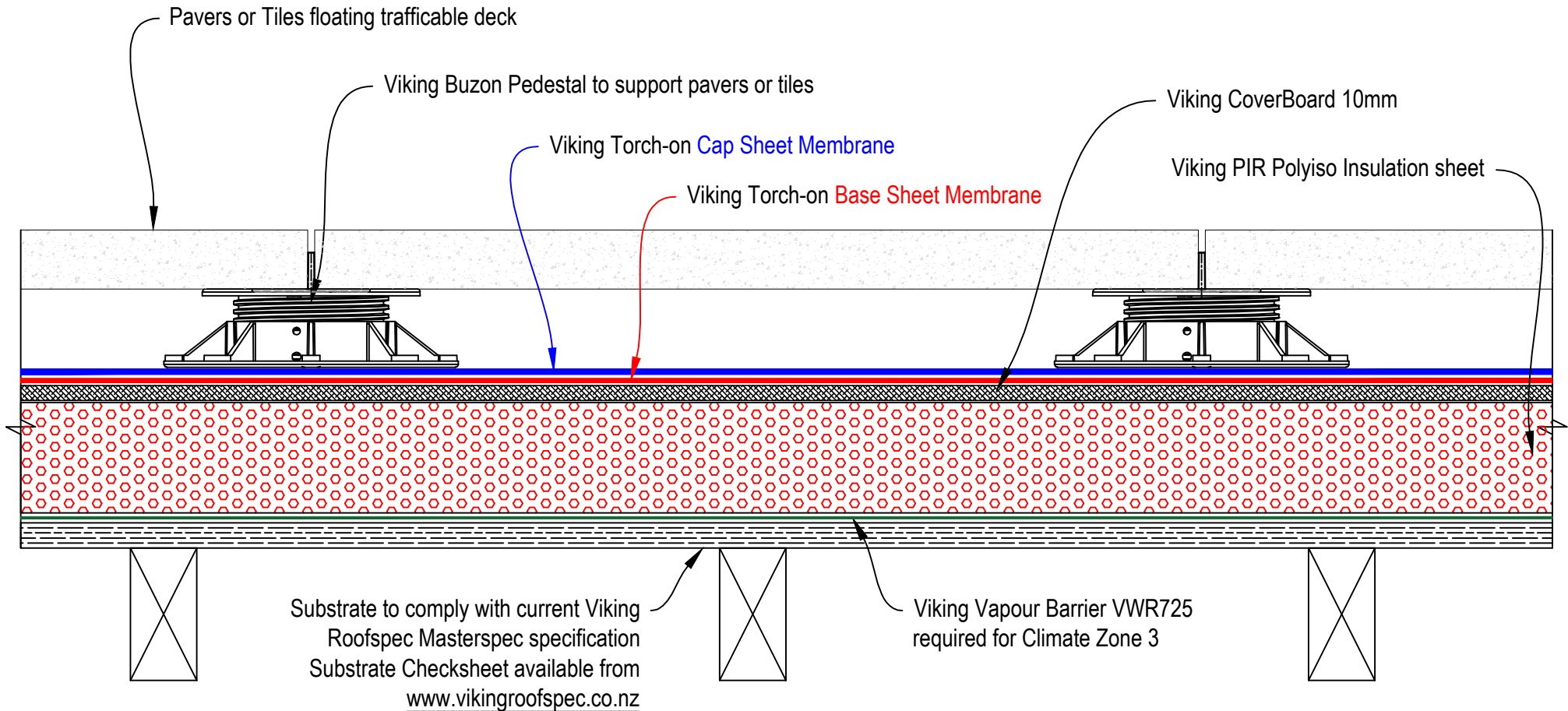


DRAWING TITLE
Viking WarmRoof with Viking Torch-on 2 layer membrane System Pedestal system over WarmRoof with Timber Deck

NOTES:
1/ Substrate is Indicative Only. 2/ Refer Viking Torch-on details for further waterproofing info.

DRAWING STATUS		
INFORMATION ONLY		
Not to Scale	DATE 28/5/2018	Detail Ref.
DRAWN	Viking Roofspec	VWR13VT
SERIES	1.10	

Note: For floating trafficable decks install Viking Cover-board between PIR insulation and membrane.

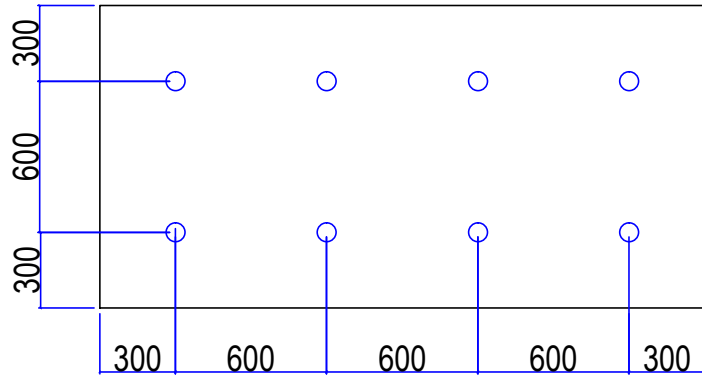


DRAWING TITLE
Viking WarmRoof with Viking Torch-on 2 layer membrane System Pedestal system over WarmRoof with Pavers or Tiles

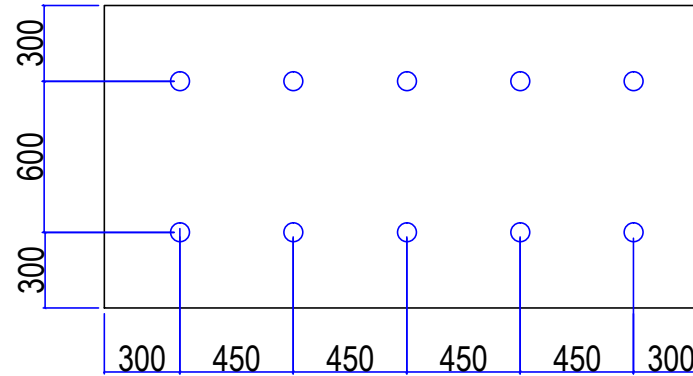
NOTES:
1/ Substrate is Indicative Only. 2/ Refer Viking Torch-on details for further waterproofing info.

DRAWING STATUS		
INFORMATION ONLY		
Not to Scale	DATE 28/5/2018	Detail Ref.
DRAWN	Viking Roofspec	VWR14VT
SERIES	1.10	

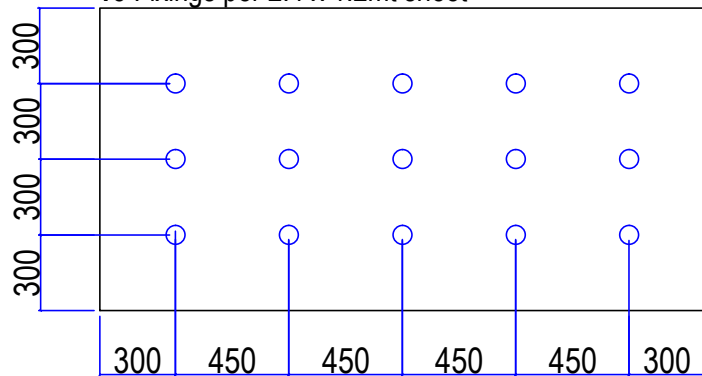
Field of Roof PIR fixing centres
8 Fixings per 2.4 x 1.2mt sheet



Perimeter of Roof PIR fixing centres
10 Fixings per 2.4 x 1.2mt sheet
- Perimeter Area 2.4mt from roof edge



Corner of Roof PIR fixing centres
15 Fixings per 2.4 x 1.2mt sheet



DRAWING TITLE
Viking WarmRoof Polyiso Attachment Patterns for Mechanical Fix of PIR

NOTES:
1/ Substrate is Indicative Only. 2/ Refer Enviroclad Typical Details for further waterproofing details.

DRAWING STATUS		
INFORMATION ONLY		
Not to Scale	DATE 09/4/2019	Detail Ref.
DRAWN	Viking Roofspec	Pattern
SERIES	1.10	