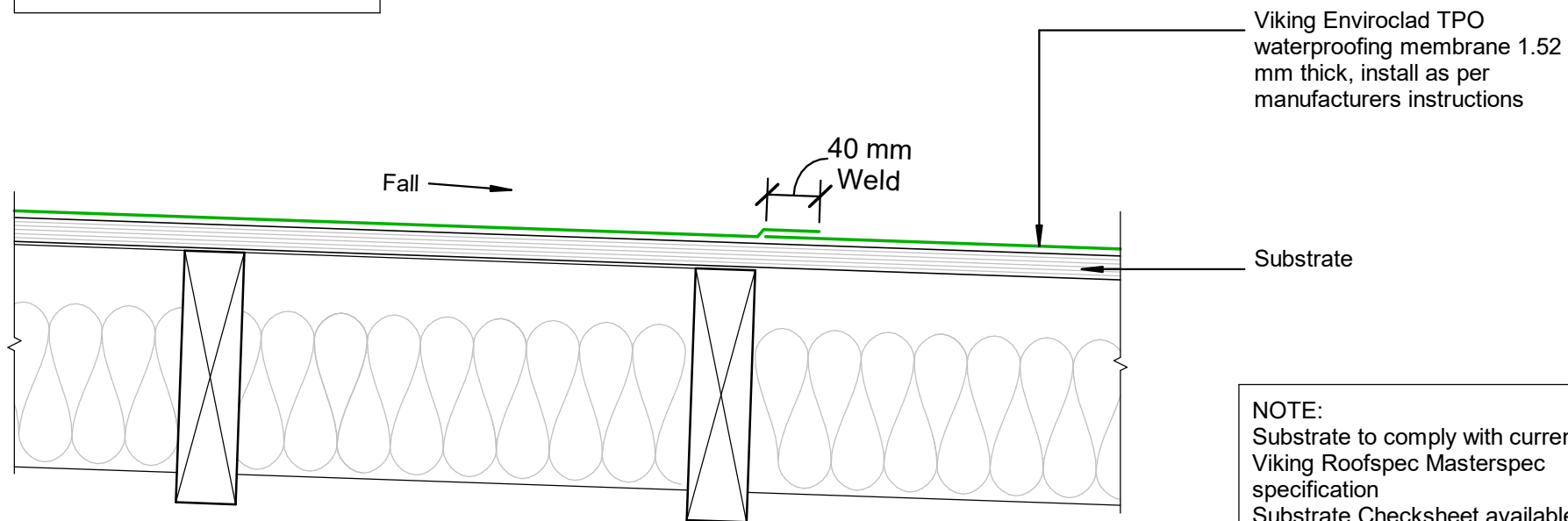


NOTE:  
Sheet laps may also run in  
the direction of fall



NOTE:  
Substrate to comply with current  
Viking Roofspec Masterspec  
specification  
Substrate Checksheet available  
from [www.vikingroofspec.co.nz](http://www.vikingroofspec.co.nz)

DRAWING TITLE

Viking Enviroclad  
Intersection\_Sheet Lap

NOTES:

- \* Angle fillets are not required at upstands for Enviroclad
- \* All fixings, cladding and structure are indicative only unless notated



Enviroclad  
systems are  
CodeMarked

DRAWING

INFORMATION ONLY

Scale: Not to Scale	Date: 23/11/2020	Drawn: Viking
Detail Ref: <b>VIK_ENV_066_INTSSHEL</b>		

