

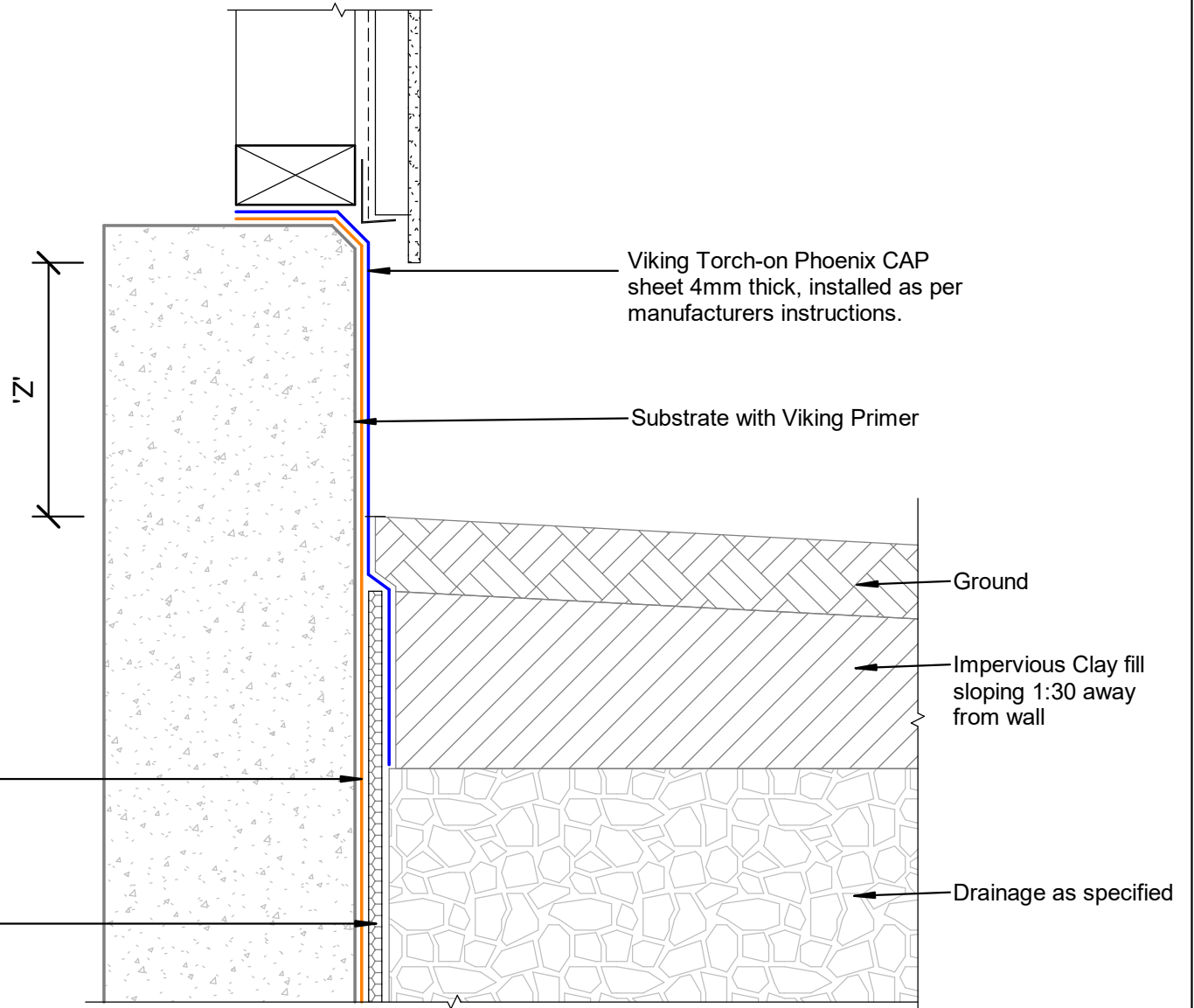
NOTE:  
 Substrate to comply with current Viking Roofspec  
 Masterspec specification  
 Substrate Checksheet available from  
[www.vikingroofspec.co.nz](http://www.vikingroofspec.co.nz)

NOTE:  
 Precast concrete with no voids  
 Blockwork requires a flush finish to side of tanking

NOTE:  
 'Z' refer E2/AS1 fig. 65 table 18 for cladding to  
 ground clearances

Viking Peel & Stick Tanking  
 membrane installed per  
 manufacturers instructions

Viking Drainage Protection Board



Viking Torch-on Phoenix CAP  
 sheet 4mm thick, installed as per  
 manufacturers instructions.

Substrate with Viking Primer

Ground

Impervious Clay fill  
 sloping 1:30 away  
 from wall

Drainage as specified

DRAWING TITLE

Viking Tanking - Peel & Stick  
 Termination\_Under Bottom Plate

NOTES:

\* All fixings, cladding and structure are  
 indicative only unless notated

\* Drawings to be read with Viking  
 Specifications

INFORMATION

Viking Tanking systems are  
 BRANZ Appraised - 826

DRAWING

INFORMATION ONLY

Scale:	Date:	Drawn:	Viking
Not to Scale	01/03/2022		
Detail Ref:			<b>VIK_BGT_PS_33</b>