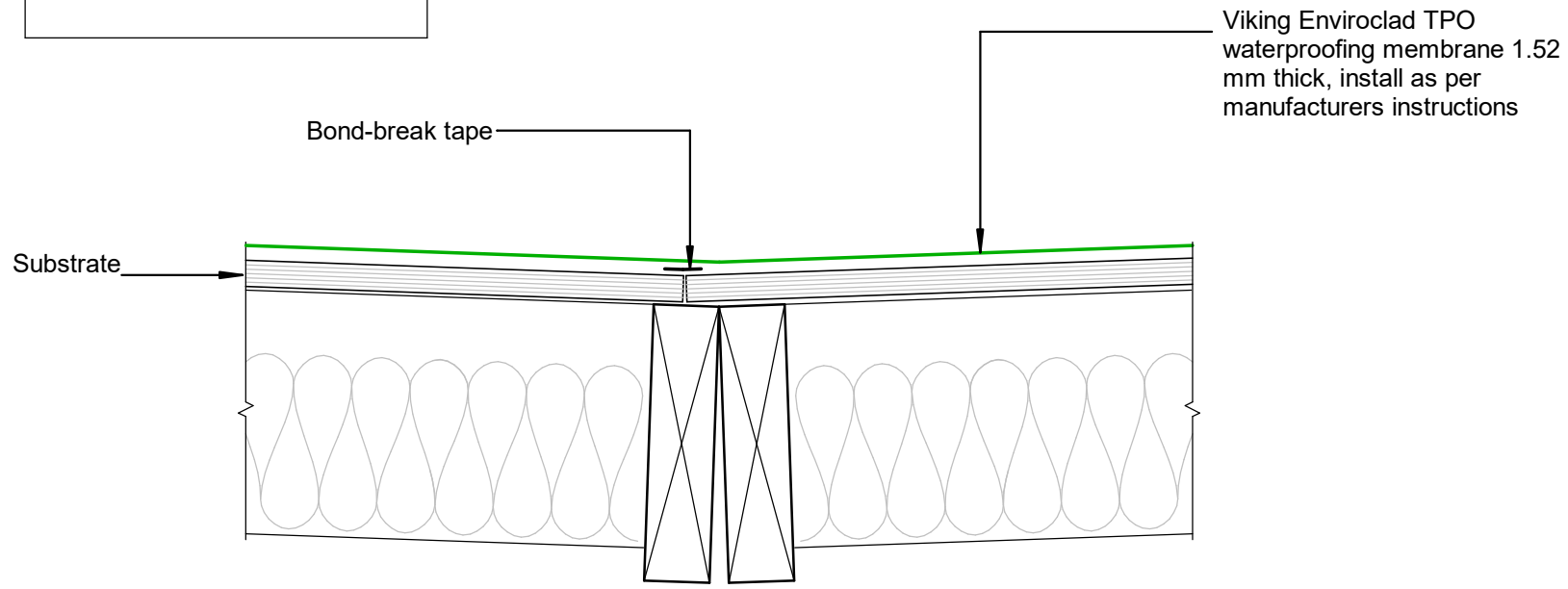


NOTE:  
 Substrate to comply with current  
 Viking Roofspec Masterspec  
 specification  
 Substrate Checksheet available  
 from [www.vikingroofspec.co.nz](http://www.vikingroofspec.co.nz)



DRAWING TITLE

Viking Enviroclad  
 Intersection\_Valley

NOTES:

- \* Angle fillets are not required at upstands for Enviroclad
- \* All fixings, cladding and structure are indicative only unless notated



Enviroclad  
 systems are  
 CodeMarked

DRAWING

INFORMATION ONLY

Scale:	Date:	Drawn:	Viking
Not to Scale	23/11/2020		
Detail Ref: <b>VIK_ENV_065_INTSVALL</b>			