

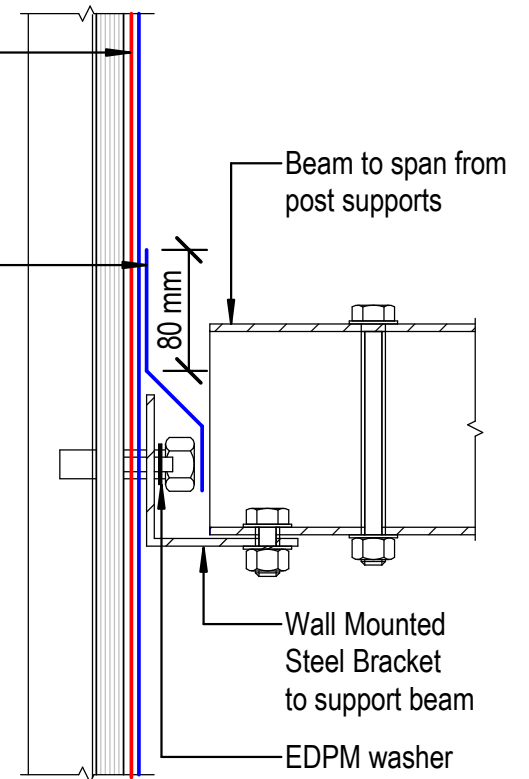
Viking Torch-on BASE sheet 3mm thick, install as per manufacturers instructions

Viking Torch-on CAP sheet 4mm thick, install as per manufacturers instructions

Viking Torch-on CAP sheet 4mm thick, install as per manufacturers instructions

Substrate

Viking Torch-on BASE sheet 3mm thick, install as per manufacturers instructions



Wall Mounted Bracket

**NOTE:**  
 Post and Brackets are SED.  
 Spaced according to weight and beam spanning abilities.  
 Not supplied by Viking Roofspec.

DRAWING TITLE

Viking Torch-On  
 Penetration\_Post or Rail for Plant Room equipment

NOTES:

- Viking Waterproof Membrane as notated can be Viking Gemini, Lybra or Phoenix Super.
- All fixings, cladding and structure are indicative only unless notated.

**CodeMark**

Cert # GM-CMNZ30092  
 Cert # BV-CMNZ70171

Viking Torch-On systems are CodeMarked

DRAWING

INFORMATION ONLY

Scale:	Date:	Drawn:	Viking
Not to Scale	23/11/2020		
Detail Ref:			<b>VIK_TOR_011_PENEPOST</b>