

Optional foam infill to close gap between metal substrate and framing

Viking Vapour Barrier, install as per manufacturers instructions

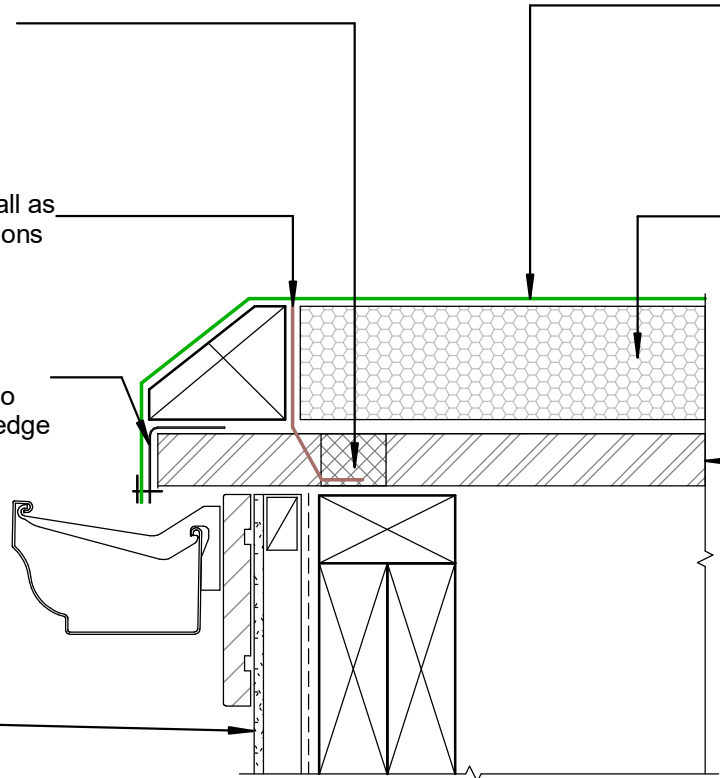
1.6mm Alum or S/S Angle 50x50mm with Fixing-Bar to secure membrane to drip-edge

Cladding system as designed by others

Viking Enviroclad TPO waterproofing membrane 1.52 mm thick, install as per manufacturers instructions

Viking PIR Polyiso Insulation

Substrate



NOTE:
 Substrate to comply with current Viking Roofspec Masterspec specification
 Substrate Checksheet available from www.vikingroofspec.co.nz

DRAWING TITLE

Viking WarmSpan - Enviroclad
 Verge_Drip edge to External Spouting

NOTES:

- * Angle fillets are not required at upstands for Enviroclad
- * All fixings, cladding and structure are indicative only unless notated
- * All details to be read in conjunction with Viking Specifications

WarmSpan System is Branz Appraised - 713

DRAWING

INFORMATION ONLY

Scale:	Date:	Drawn:	Viking
Not to Scale	01/03/2022		
Detail Ref: VIK_WSE_032_VERGDRIP			

