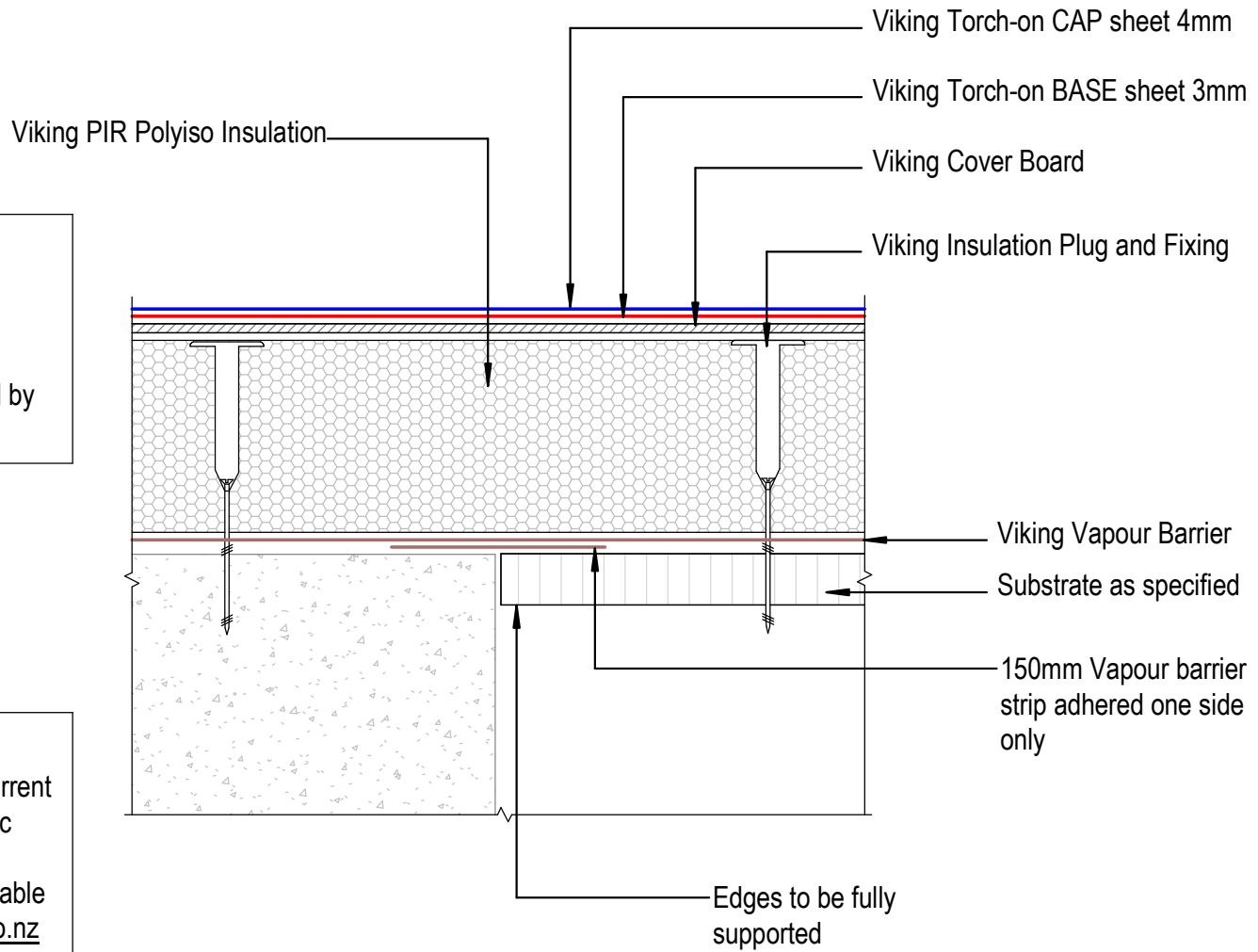


NOTE:
Expansion allowance in the substrate is specific to the structure and design. These are to be determined by designer or engineer.

NOTE:
Substrate to comply with current Viking Roofspec Masterspec specification
Substrate Checksheet available from www.vikingroofspec.co.nz



DRAWING TITLE

Viking WS2 - Torch-On
Intersection_Substrate Expansion to Concrete

NOTES:

*Viking Waterproof Membrane as notated can be Viking Gemini, Lybra, Phoenix Super or Halley P.
*All details to be read in conjunction with Viking Specifications.

Substrate and structure are indicative only

DRAWING STATUS

INFORMATION ONLY

Scale:
Not to Scale

Date:
01/10/2022

Drawn:
Viking

Detail Ref: **VIK_WS2_TOR_062A_INTSSUBS**