

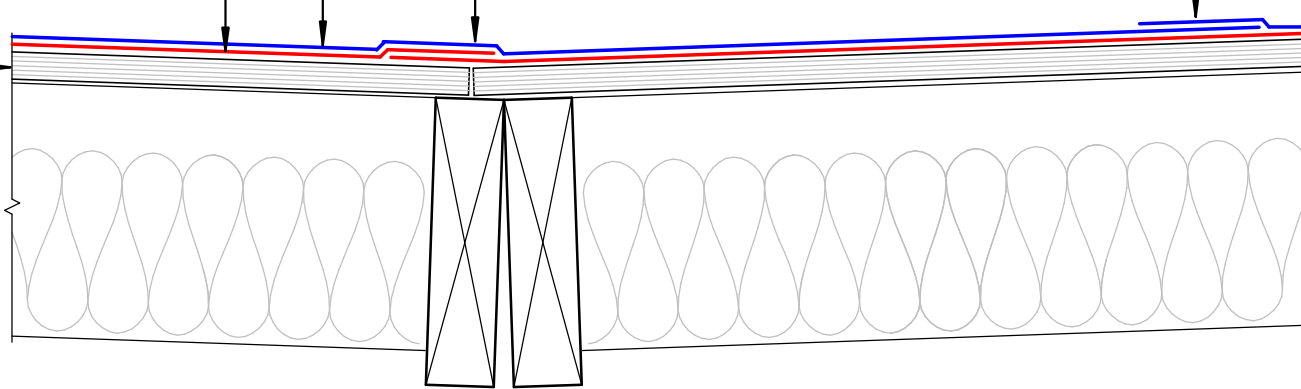
Viking Torch-on CAP sheet 4mm thick, install as per manufacturers instructions

Viking Torch-on BASE sheet 3mm thick, install as per manufacturers instructions

Substrate

Offset Base and Cap Sheet Laps by half sheet length and width

**NOTE:**  
 Substrate to comply with current Viking Roofspec Masterspec specification  
 Substrate Checksheet available from [www.vikingroofspec.co.nz](http://www.vikingroofspec.co.nz)



DRAWING TITLE

Viking Torch-On  
 Intersection\_Valley

NOTES:

- Viking Waterproof Membrane as notated can be Viking Gemini, Lybra or Phoenix Super.
- All fixings, cladding and structure are indicative only unless notated.



Viking Torch-On systems are CodeMarked

DRAWING

INFORMATION ONLY

Scale:	Date:	Drawn:	Viking
Not to Scale	23/11/2020		
Detail Ref: <b>VIK_TOR_065_INTSVALL</b>			