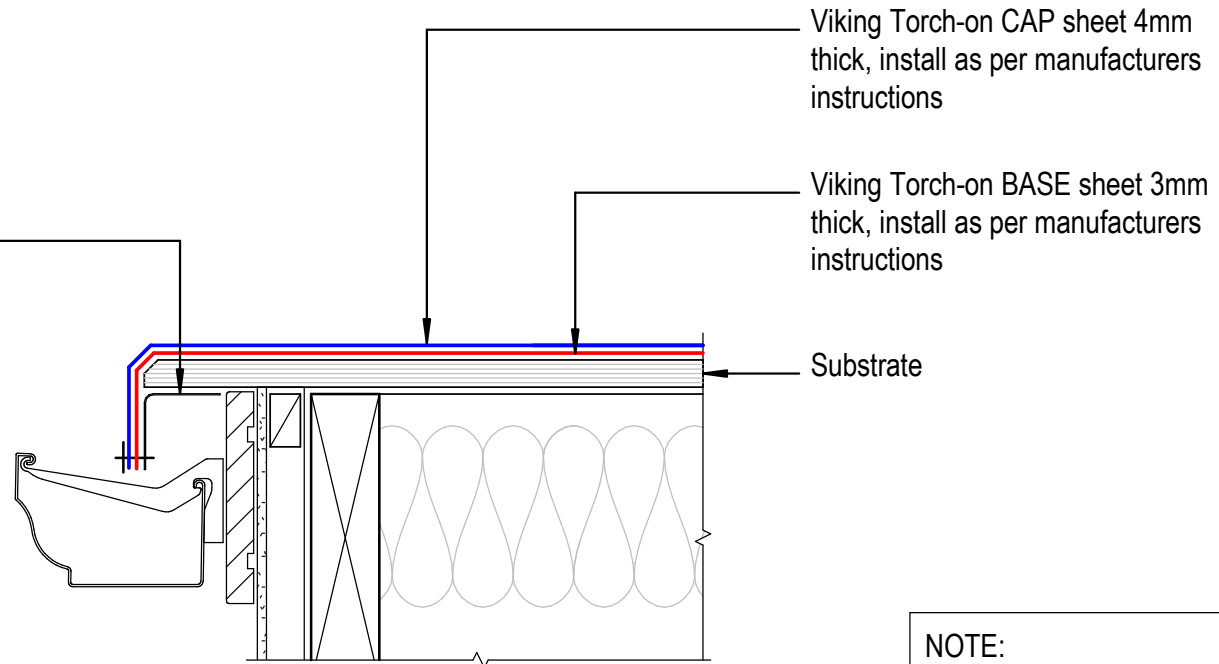


1.6mm Alum or S/S Angle  
50x50mm with Fixing-Bar to  
secure membrane to drip-edge



Viking Torch-on CAP sheet 4mm  
thick, install as per manufacturers  
instructions

Viking Torch-on BASE sheet 3mm  
thick, install as per manufacturers  
instructions

Substrate

**NOTE:**  
Substrate to comply with current  
Viking Roofspec Masterspec  
specification  
Substrate Checksheet available  
from [www.vikingroofspec.co.nz](http://www.vikingroofspec.co.nz)

DRAWING TITLE

Viking Torch-On  
Verge\_Drip edge to External Spouting

NOTES:

- Viking Waterproof Membrane as notated can be Viking Gemini, Lybra or Phoenix Super.
- All fixings, cladding and structure are indicative only unless notated.

**CodeMark**

Cert # GM-CMNZ30092  
Cert # BV-CMNZ70171

Viking Torch-On systems are CodeMarked

DRAWING

INFORMATION ONLY

Scale:	Date:	Drawn:	Viking
Not to Scale	23/11/2020		
Detail Ref:			<b>VIK_TOR_032_VERGDRIP</b>

**Viking** Roofspec  
Taking care of detail