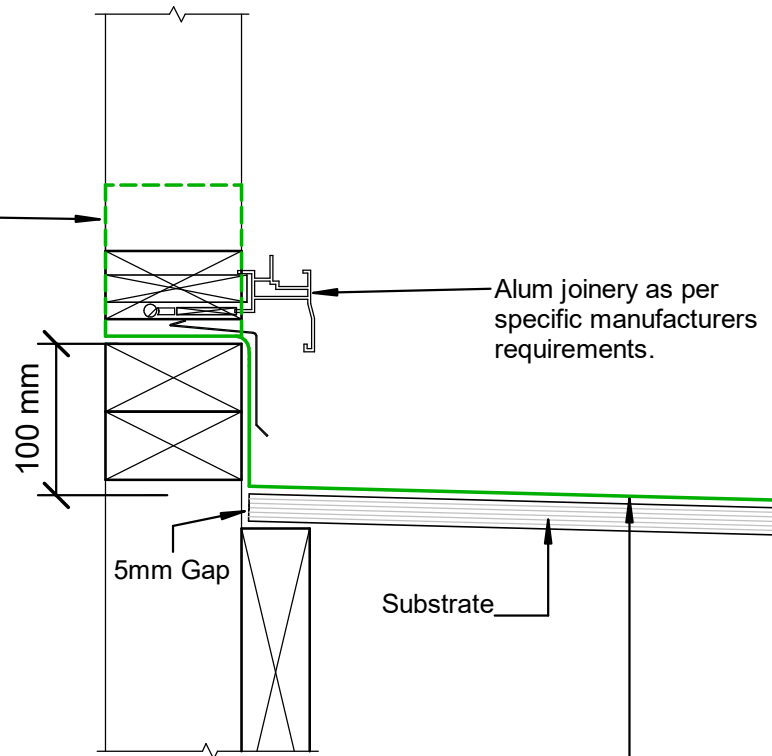


Finish Membrane 100mm min. up framing at ends. Width to suit joinery and cladding. Refer E2/AS1 FIG62(b)(d)



Alum joinery as per specific manufacturers requirements.

NOTE:
 Substrate to comply with current Viking Roofspec Masterspec specification
 Substrate Checksheet available from www.vikingroofspec.co.nz

Viking Enviroclad TPO waterproofing membrane 1.52 mm thick, install as per manufacturers instructions

DRAWING TITLE

Viking Enviroclad
 Threshold_Window

NOTES:

- * Angle fillets are not required at upstands for Enviroclad
- * All fixings, cladding and structure are indicative only unless notated



Enviroclad systems are CodeMarked

DRAWING

INFORMATION ONLY

Scale: Not to Scale	Date: 23/11/2020	Drawn: Viking
Detail Ref: VIK_ENV_091_WINDTHRS		

