

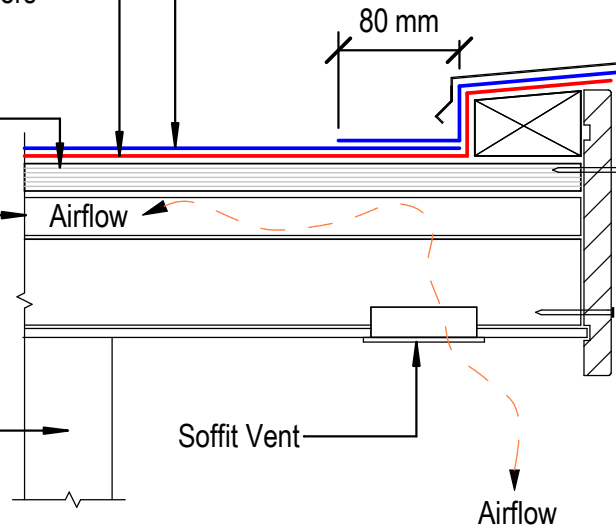
Viking Torch-on CAP sheet 4mm thick, install as per manufacturers instructions

Viking Torch-on BASE sheet 3mm thick, install as per manufacturers instructions

Substrate

Castellated Timber Cavity Batten CCA Treated for cross ventilation between substrate and insulation

Selected exterior cladding installed as per manufactures specifications



Refer to Table 7 E2/AS1

NOTE: Soffit Vents may be louvre vents or others

NOTE: VENTING
Alternatively vent through Soffit or through top of roof with Viking Cavity Vents

NOTE:
Substrate to comply with current Viking Roofspec Masterspec specification
Substrate Checksheet available from www.vikingroofspec.co.nz

DRAWING TITLE

Viking Torch-On
Ventilation_Cavity vent through Soffit

NOTES:

- Viking Waterproof Membrane as notated can be Viking Gemini, Lybra or Phoenix Super.
- All fixings, cladding and structure are indicative only unless notated.

CodeMark

Cert # GM-CMNZ30092

Cert # BV-CMNZ70171

Viking Torch-On systems are CodeMarked

DRAWING

INFORMATION ONLY

Scale:

Not to Scale

Date:

23/11/2020

Drawn:

Viking

Detail Ref:

VIK_TOR_021B_VENTSOFF