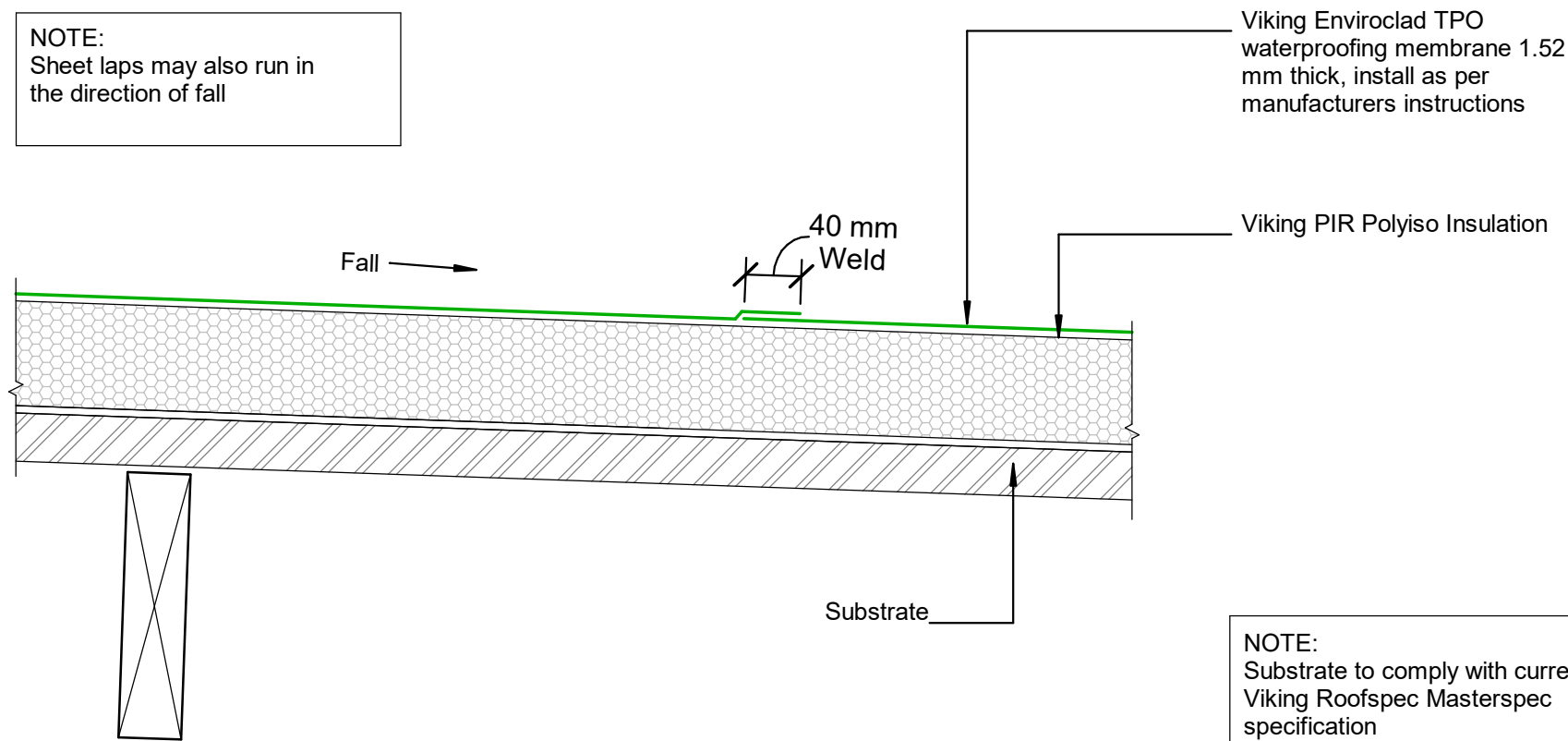


NOTE:  
Sheet laps may also run in the direction of fall



Viking Enviroclad TPO waterproofing membrane 1.52 mm thick, install as per manufacturers instructions

Viking PIR Polyiso Insulation

Substrate

NOTE:  
Substrate to comply with current Viking Roofspec Masterspec specification  
Substrate Checksheet available from [www.vikingroofspec.co.nz](http://www.vikingroofspec.co.nz)

DRAWING TITLE

Viking WarmSpan - Enviroclad Intersection\_Sheet Lap

NOTES:

- \* Angle fillets are not required at upstands for Enviroclad
- \* All fixings, cladding and structure are indicative only unless notated
- \* All details to be read in conjunction with Viking Specifications

WarmSpan System is Branz Appraised - 713

DRAWING

INFORMATION ONLY

Scale:	Date:	Drawn:	Viking
Not to Scale	01/03/2022		
Detail Ref: <b>VIK_WSE_066_INTSSHEL</b>			

