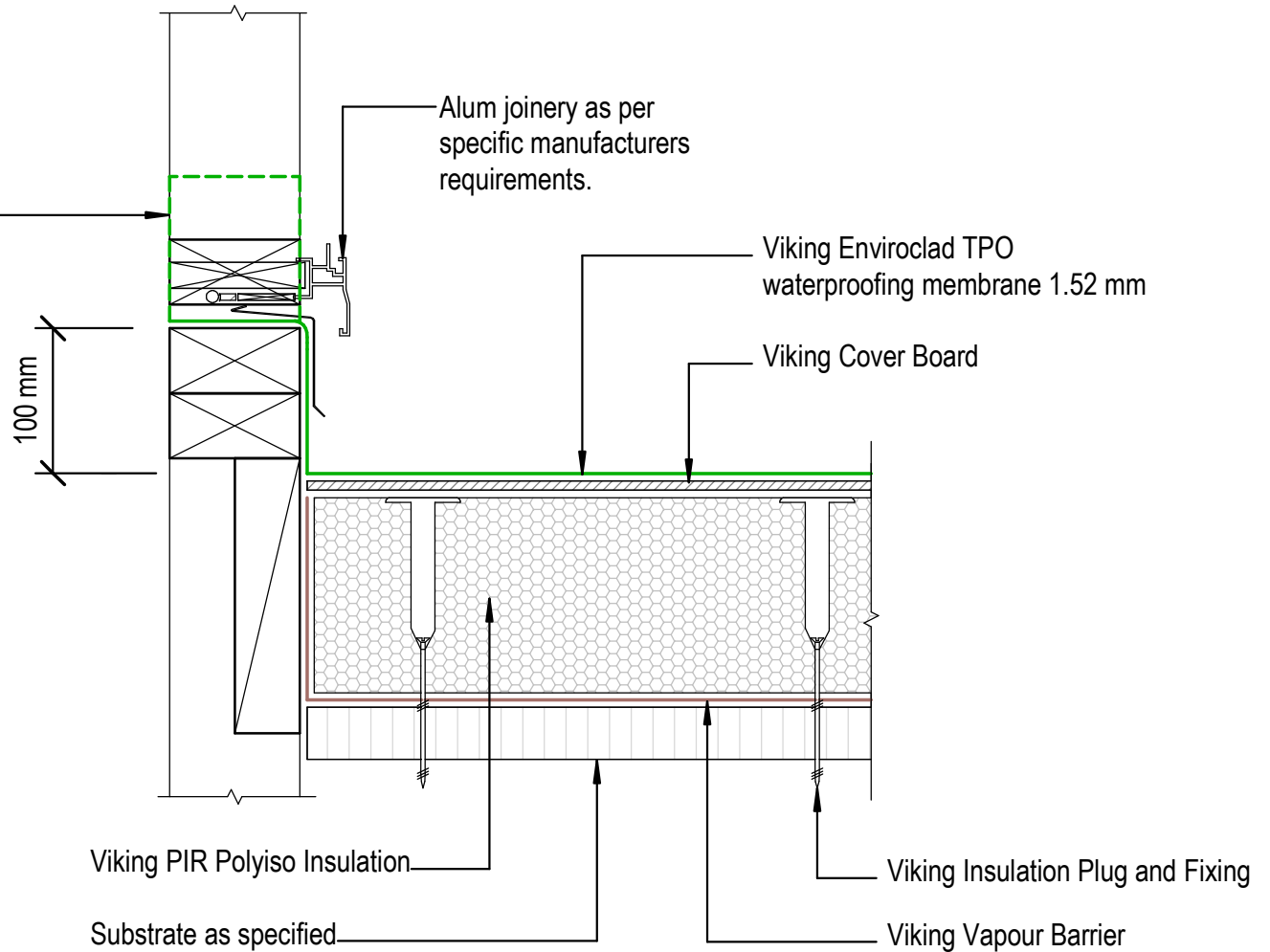


Finish Membrane 100mm min. up framing at ends. Width to suit joinery and cladding. Refer E2/AS1 FIG62(b)(d)



NOTE:
 Substrate to comply with current Viking Roofspec Masterspec specification
 Substrate Checksheet available from www.vikingroofspec.co.nz



DRAWING TITLE
Viking WS2 - Enviroclad Threshold_Window

NOTES:
<ul style="list-style-type: none"> * Angle fillets are not required at upstands for Enviroclad * All fixings, cladding and structure are indicative only unless noted * All details to be read in conjunction with Viking Specifications

Substrate and structure are indicative only

DRAWING STATUS			
INFORMATION ONLY			
Scale:	Date:	Drawn:	Viking
Not to Scale	01/10/2022		
Detail Ref: VIK_WS2_ENV_091_WINDTHRS			