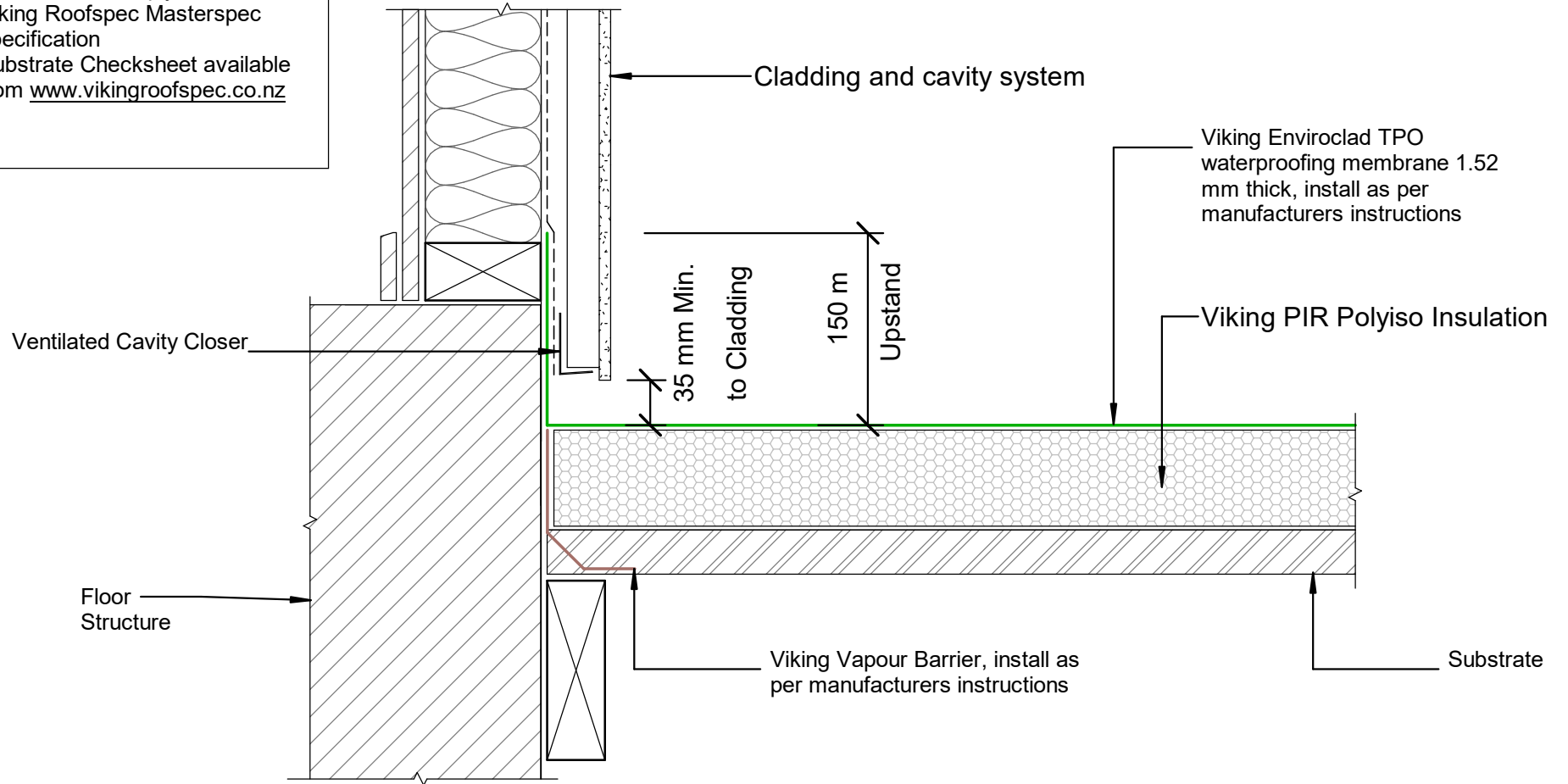


NOTE:
 Substrate to comply with current
 Viking Roofspec Masterspec
 specification
 Substrate Checksheet available
 from www.vikingroofspec.co.nz



DRAWING TITLE

Viking WarmSpan - Enviroclad
 Apron_Upstand behind cladding

NOTES:

- * Angle fillets are not required at upstands for Enviroclad
- * All fixings, cladding and structure are indicative only unless notated
- * All details to be read in conjunction with Viking Specifications

WarmSpan System is Branz
 Appraised - 713

DRAWING

INFORMATION ONLY

Scale:	Date:	Drawn:	Viking
Not to Scale	01/03/2022		

Detail Ref
VIK_WSE_080_APRNUPST