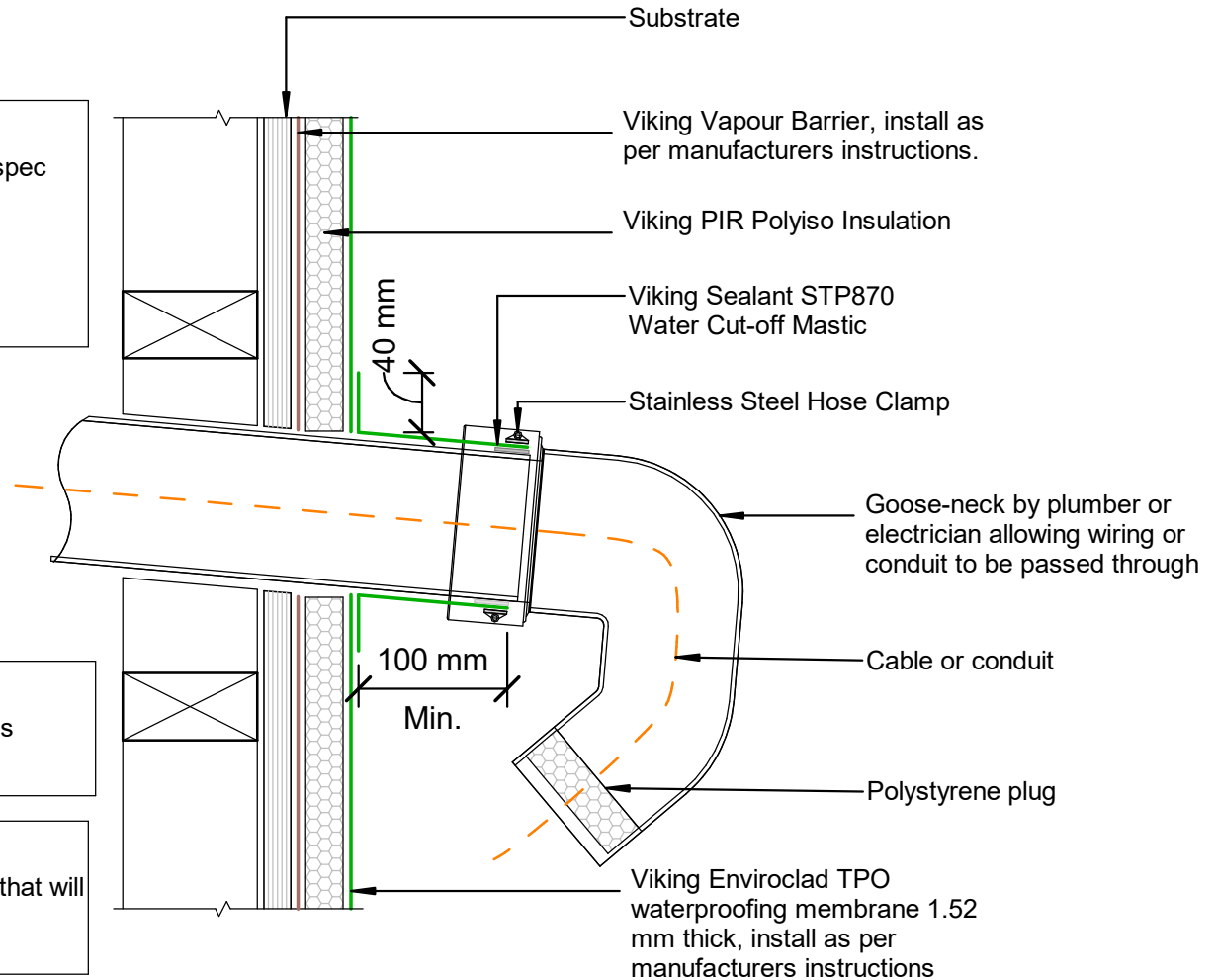


NOTE:  
 Substrate to comply with current Viking Roofspec  
 Masterspec specification  
 Substrate Checksheet available from  
[www.vikingroofspec.co.nz](http://www.vikingroofspec.co.nz)

NOTE:  
 A 5° fall is recommended for pipe penetrations

NOTE:  
 Membrane is suitable to be installed to pipes that will  
 reach max. temperatures of 70° celcius



DRAWING TITLE

Viking WarmSpan - Enviroclad  
 Penetration\_Horizontal ducting pipe

NOTES:

- \* Angle fillets are not required at upstands for Enviroclad
- \* All fixings, cladding and structure are indicative only unless notated
- \* All details to be read in conjunction with Viking Specifications

WarmSpan System is Branz  
 Appraised - 713

DRAWING

INFORMATION ONLY

Scale:	Date:	Drawn:	Viking
Not to Scale	01/03/2022		

Detail Ref.  
**VIK\_WSE\_006A\_HORIDUCT**

Roofspec  
**Viking**  
 Taking care of detail