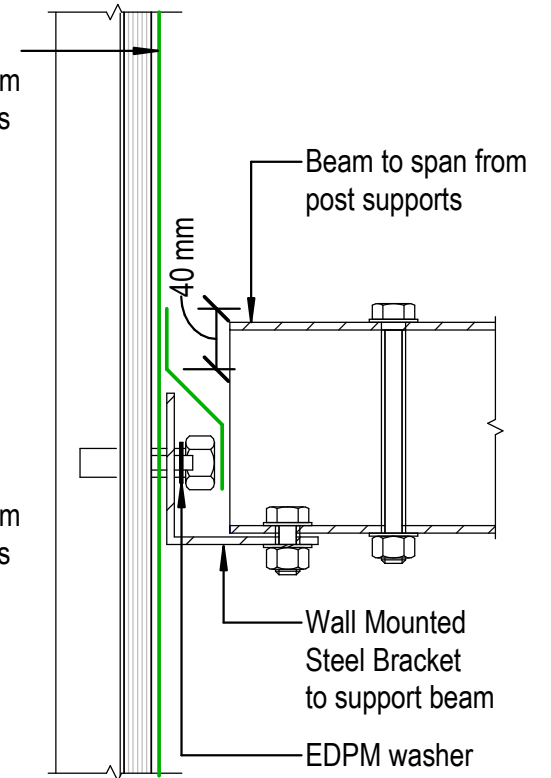


Viking Enviroclad TPO waterproofing membrane 1.52 mm thick, install as per manufacturers instructions

Viking Enviroclad TPO waterproofing membrane 1.52 mm thick, install as per manufacturers instructions



Wall Mounted Bracket

NOTE:
 Post and Brackets are SED.
 Spaced according to weight and
 beam spanning abilities.
 Not supplied by Viking Roofspec.

DRAWING TITLE

Viking Enviroclad
 Penetration_Post or Rail for Plant Room equipment

NOTES:

* Angle fillets are not required at
 upstands for Enviroclad
 * All fixings, cladding and structure are
 indicative only unless notated

CodeMark

Cert # GM-CMNZ30058

Cert # BV-CMNZ70176

Enviroclad systems are CodeMarked

DRAWING

INFORMATION ONLY

Scale: Not to Scale Date: 23/11/2020 Drawn: Viking

Detail Ref: VIK_ENV_011_PENEPOST