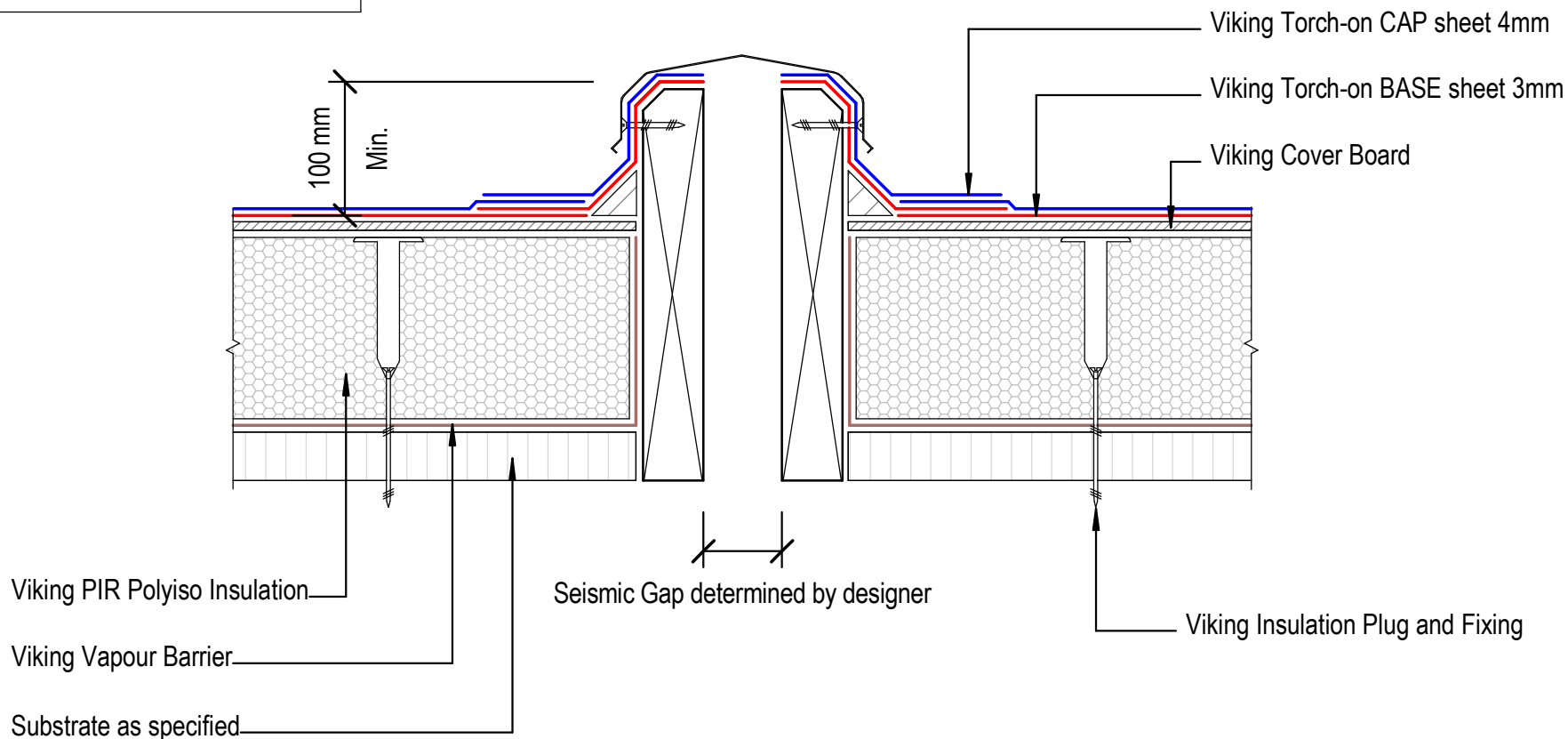


NOTE:
 Substrate to comply with current
 Viking Roofspec Masterspec
 specification
 Substrate Checksheet available
 from www.vikingroofspec.co.nz

Specific Seismic Joint by Designer



DRAWING TITLE

Viking WS2 - Torch-On
 Intersection_Seismic Gap Generic

NOTES:

*Viking Waterproof Membrane as notated can be
 Viking Gemini, Lybra, Phoenix Super or Halley P.
 *All details to be read in conjunction with
 Viking Specifications.

Substrate and structure are
 indicative only

DRAWING STATUS

INFORMATION ONLY

Scale:
 Not to Scale

Date:
 01/10/2022

Drawn:

Viking

Detail Ref:

VIK_WS2_TOR_063_INTSSEIS