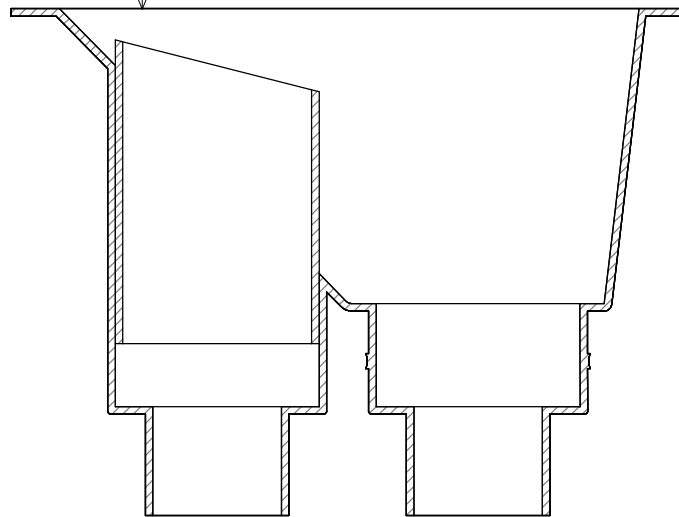


Viking Roofspec sump / overflow  
IMR120, installed as per  
manufacturers instructions.



**Viking Roofspec Sump 02 D17:  
Sumps - IMR120 450x300x200mm deep**

Viking Roofspec sump / overflow  
IMR120, installed as per  
manufacturers instructions.

Butylclad Yes  
Dec-K-ing No  
Enviroclad No  
Epiclad Yes  
Tanking No  
Torch-on No



**Master Accessories**  
Viking Roofspec Sumps - IMR120 450mm x 300mm x 200mm deep

NOTES:

DRAWING STATUS		
Detail		
Scale: Not to Scale	Date: 6/2022	Drawn:
Viking Roofspec Sump 02 D17		