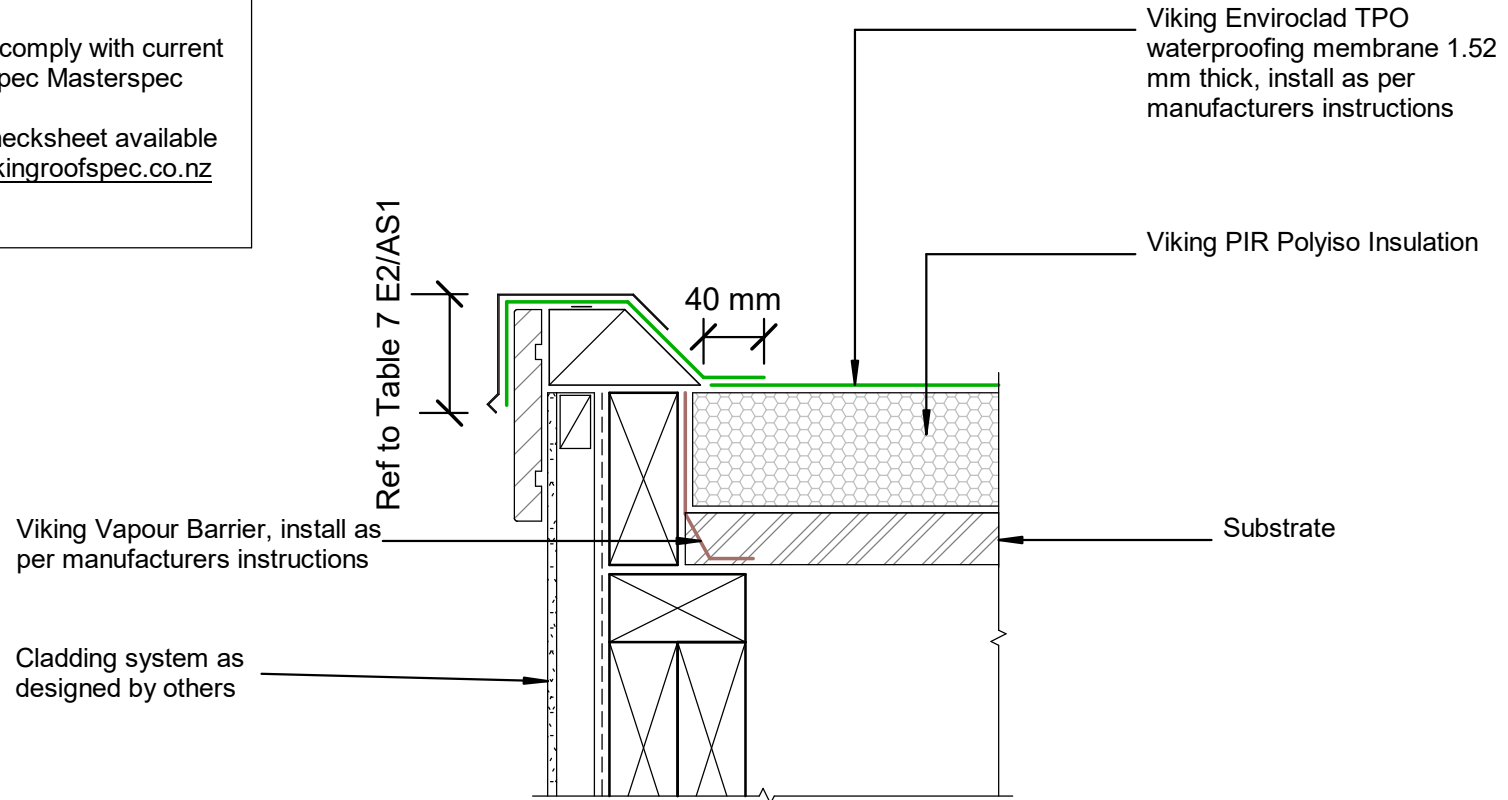


NOTE:  
 Substrate to comply with current  
 Viking Roofspec Masterspec  
 specification  
 Substrate Checksheet available  
 from [www.vikingroofspec.co.nz](http://www.vikingroofspec.co.nz)



DRAWING TITLE

Viking WarmSpan - Enviroclad  
 Verge\_Barge

NOTES:

- \* Angle fillets are not required at upstands for Enviroclad
- \* All fixings, cladding and structure are indicative only unless notated
- \* All details to be read in conjunction with Viking Specifications

WarmSpan System is Branz  
 Appraised - 713

DRAWING

INFORMATION ONLY

Scale:	Date:	Drawn:	Viking
Not to Scale	01/03/2022		

Detail Ref:  
**VIK\_WSE\_030\_VERGBARG**

Roofspec  
**Viking**  
 Taking care of detail