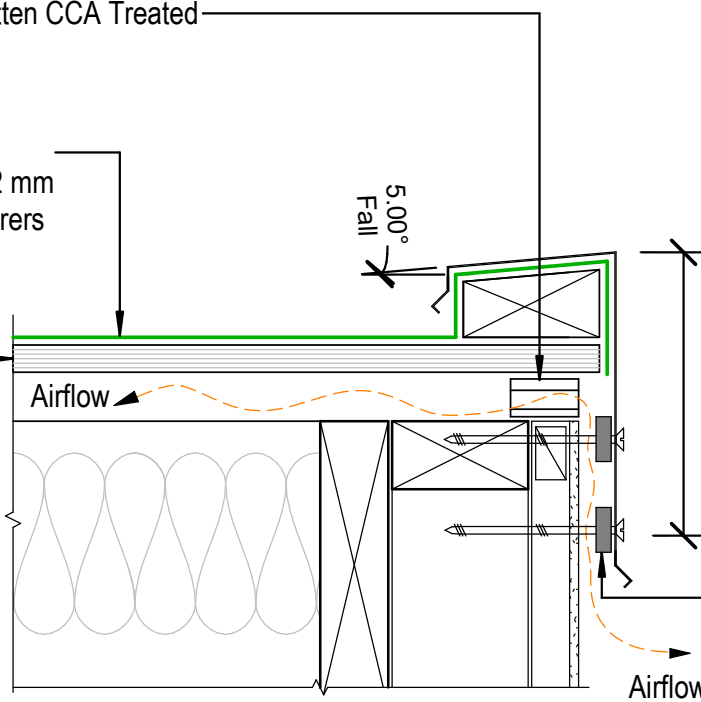


Castellated Timber Cavity Batten CCA Treated

Viking Enviroclad TPO waterproofing membrane 1.52 mm thick, install as per manufacturers instructions

Substrate



Refer to Table 7 E2/AS1

Spacer washers, 5 -10mm thickness

NOTE:
Substrate to comply with current Viking Roofspec Masterspec specification
Substrate Checksheet available from www.vikingroofspec.co.nz

NOTE: VENTING
Alternatively vent through Soffit or through top of roof with Viking Cavity Vents

DRAWING TITLE

Viking Enviroclad
Ventilation_Cavity vent at Parapet

NOTES:

- * Angle fillets are not required at upstands for Enviroclad
- * All fixings, cladding and structure are indicative only unless notated

CodeMark

Cert # GM-CMNZ30058
Cert # BV-CMNZ70176
Enviroclad systems are CodeMarked

DRAWING

INFORMATION ONLY

Scale:	Date:	Drawn:	Viking
Not to Scale	23/11/2020		

Detail Ref: **VIK_ENV_021A_VENTPAPA**

Viking Roofspec
Taking care of detail