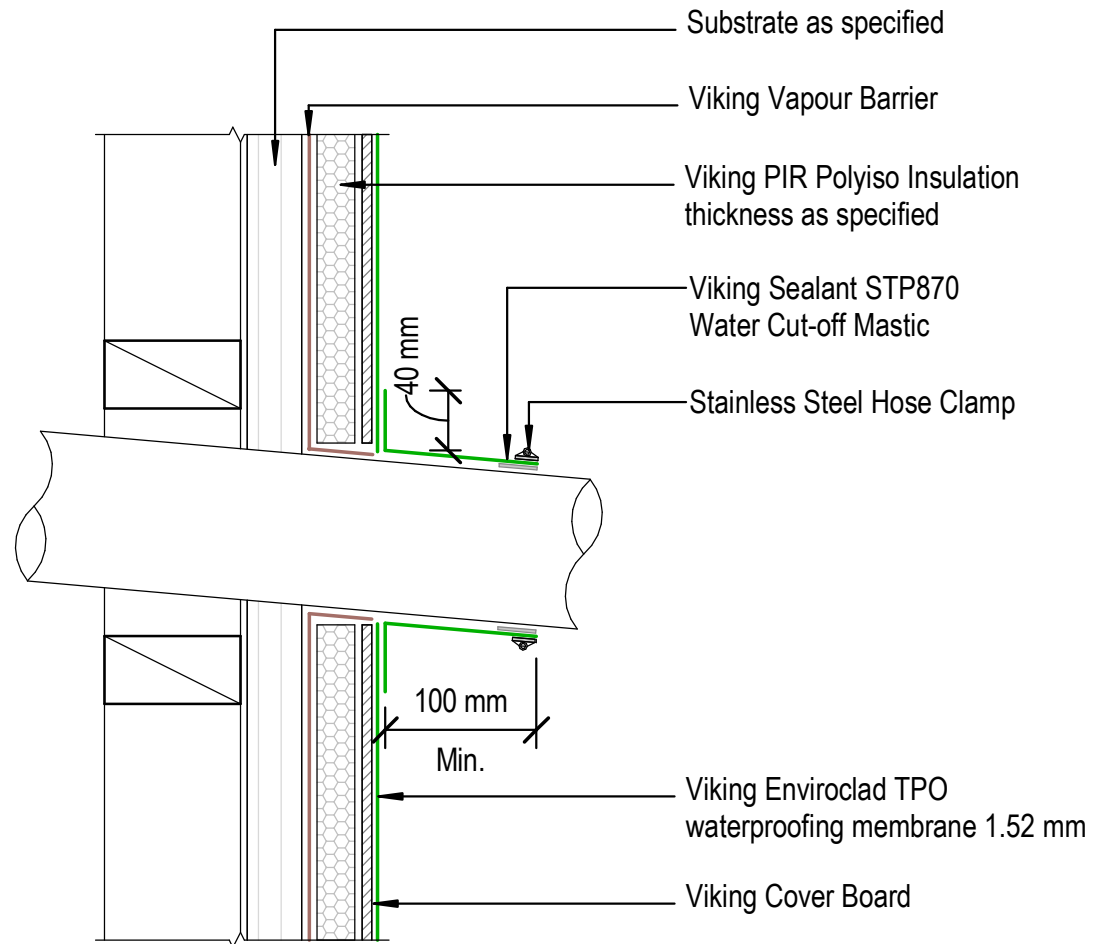


NOTE:
 Substrate to comply with current Viking Roofspec
 Masterspec specification
 Substrate Checksheet available from
www.vikingroofspec.co.nz

NOTE:
 A 5° fall is recommended for pipe penetrations

NOTE:
 Membrane is suitable to be installed to pipes that
 will reach max. temperatures of 70° celcius



DRAWING TITLE

Viking WS2 - Enviroclad
 Penetration_Horizontal pipe

NOTES:

- * Angle fillets are not required at upstands for Enviroclad
- * All fixings, cladding and structure are indicative only unless noted
- * All details to be read in conjunction with Viking Specifications

Substrate and structure are
 indicative only

DRAWING STATUS

INFORMATION ONLY

Scale:
 Not to Scale

Date:
 01/10/2022

Drawn:

Viking

Detail Ref: **VIK_WS2_ENV_005A_HORPIPE**