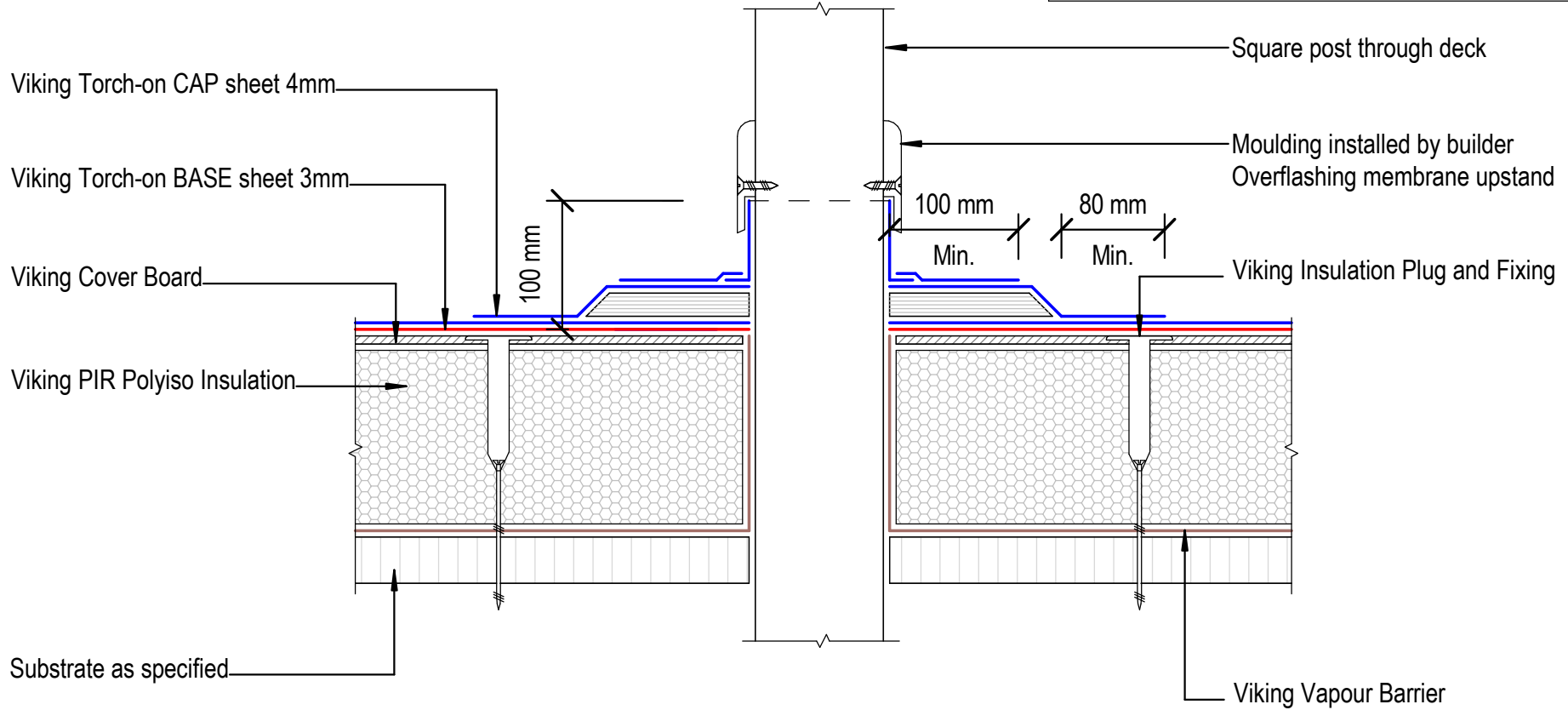


NOTE: Refer WS2\_004 for Direction of Plinth to watershed

NOTE:  
 Substrate to comply with current Viking Roofspec Masterspec specification  
 Substrate Checksheet available from [www.vikingroofspec.co.nz](http://www.vikingroofspec.co.nz)



DRAWING TITLE

Viking WS2 - Torch-On  
 Penetration\_Square Post through decking

NOTES:

\*Viking Waterproof Membrane as notated can be Viking Gemini, Lybra, Phoenix Super or Halley P.  
 \*All details to be read in conjunction with Viking Specifications.

Substrate and structure are indicative only

DRAWING STATUS

INFORMATION ONLY

Scale: Not to Scale	Date: 01/10/2022	Drawn: Viking
Detail Ref: <b>VIK_WS2_TOR_009_POSTDECK</b>		

