

Viking Roofspec 200x80mm TPO scupper STP603, installed as per manufacturers instructions.

Rain-head with Overflow by others

Builders flashing tape non-bituminous

Viking Enviroclad TPO waterproofing membrane 1.52 mm thick, install as per manufacturers instructions

Drip edge installed

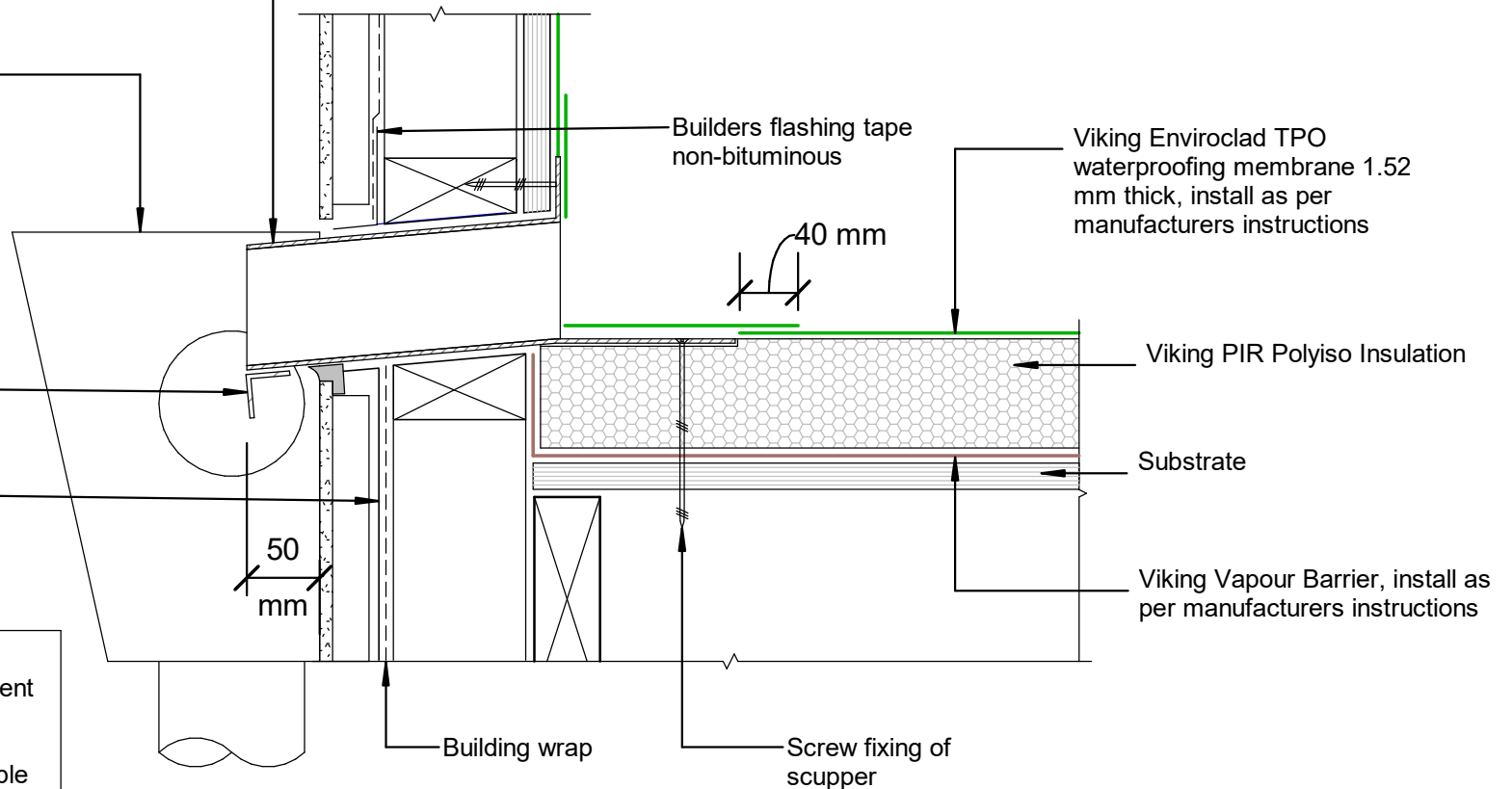
Sealant and tape by builder

Viking PIR Polyiso Insulation

Substrate

Viking Vapour Barrier, install as per manufacturers instructions

NOTE:
Substrate to comply with current Viking Roofspec Masterspec specification
Substrate Checksheet available from www.vikingroofspec.co.nz



DRAWING TITLE

Viking WarmRoof - Enviroclad Parapet_ with scupper outlet

NOTES:

- * Angle fillets are not required at upstands for Enviroclad
- * All fixings, cladding and structure are indicative only unless noted
- * All details to be read in conjunction with Viking Specifications

WarmRoof System is Branz Appraised - 713

DRAWING

INFORMATION ONLY

Scale:	Date:	Drawn:	Viking
Not to Scale	01/03/2022		

Detail Ref: **VIK_WRE_041_PARASCUP**