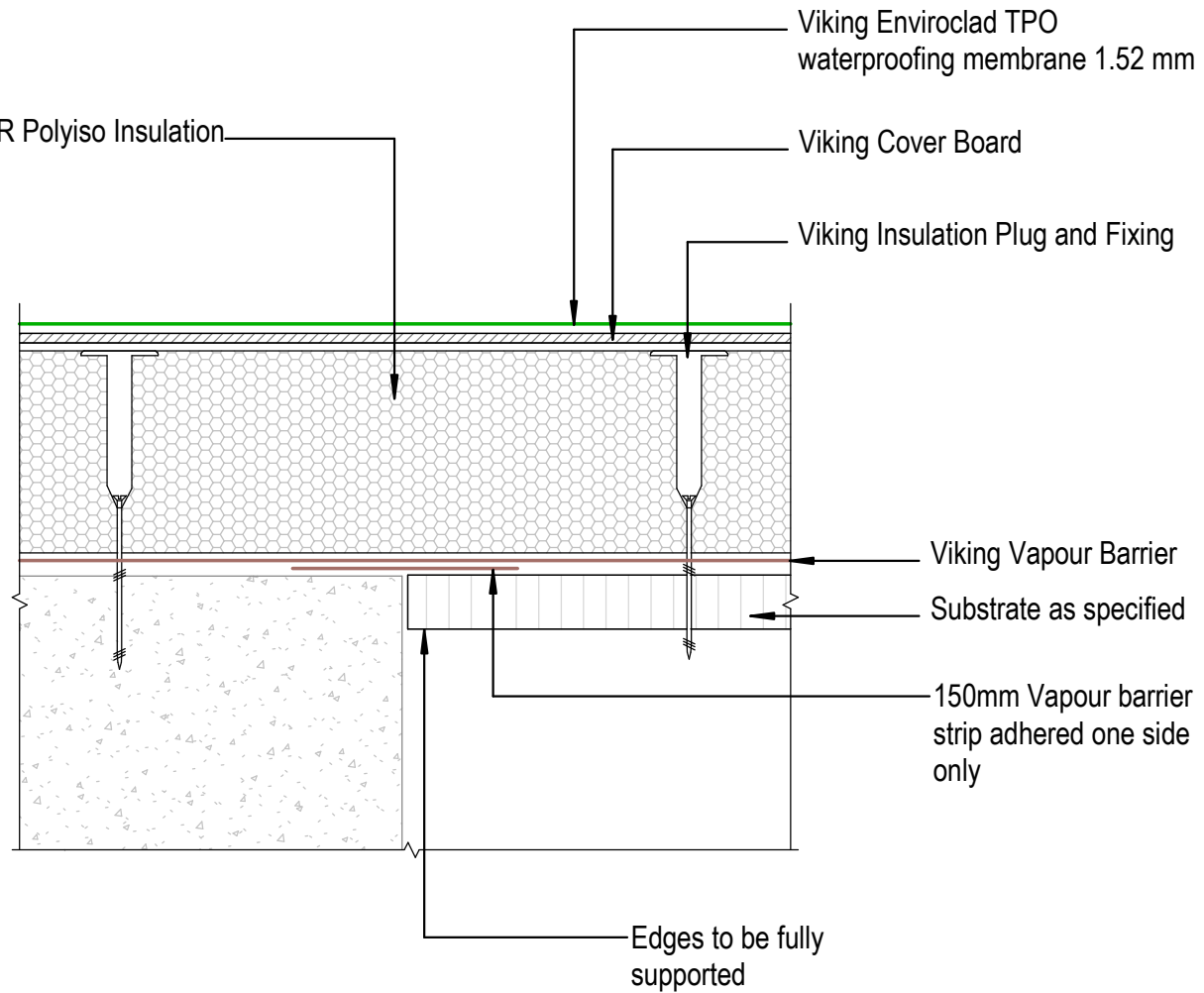


NOTE:  
Expansion allowance in the substrate is specific to the structure and design. These are to be determined by designer or engineer.

NOTE:  
Substrate to comply with current Viking Roofspec Masterspec specification  
Substrate Checksheet available from [www.vikingroofspec.co.nz](http://www.vikingroofspec.co.nz)



DRAWING TITLE

Viking WS2 - Enviroclad  
Intersection\_Substrate Expansion to Concrete

NOTES:

- \* Angle fillets are not required at upstands for Enviroclad
- \* All fixings, cladding and structure are indicative only unless noted
- \* All details to be read in conjunction with Viking Specifications

Substrate and structure are indicative only

DRAWING STATUS

INFORMATION ONLY

Scale:  
Not to Scale

Date:  
01/10/2022

Drawn: Viking

Detail Ref: **VIK\_WS2\_ENV\_062A\_INTSSUBS**