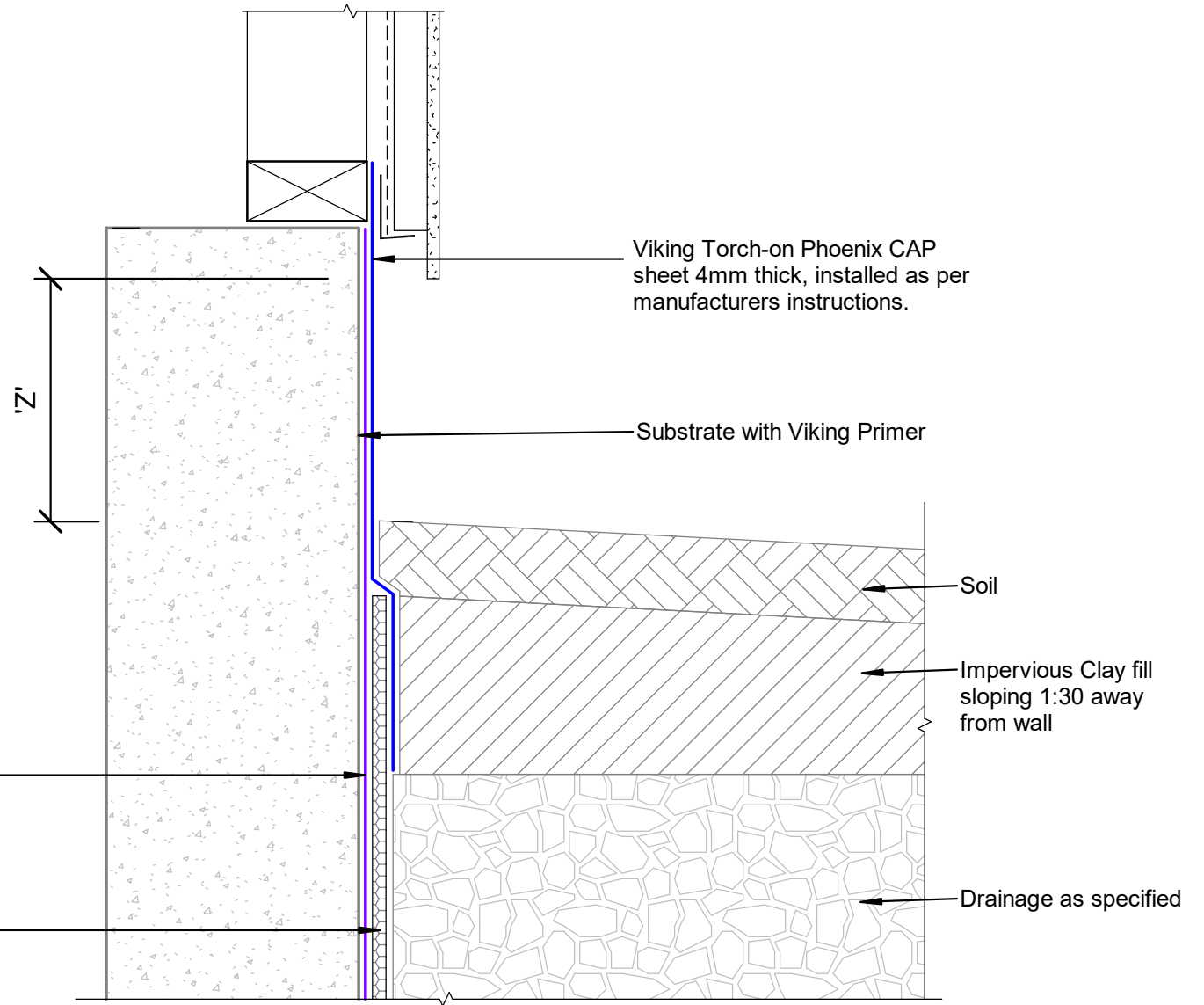


**NOTE:**  
 Substrate to comply with current Viking Roofspec Masterspec specification  
 Substrate Checksheet available from [www.vikingroofspec.co.nz](http://www.vikingroofspec.co.nz)

**NOTE:**  
 Precast concrete with no voids  
 Blockwork requires a flush finish to side of tanking

**NOTE:**  
 'Z' refer E2/AS1 fig. 65 table 18 for cladding to ground clearances



Viking Mercury Tanking membrane 4mm thick, install as per manufacturers instructions

Viking Drainage Protection Board

Viking Torch-on Phoenix CAP sheet 4mm thick, installed as per manufacturers instructions.

Substrate with Viking Primer

Soil

Impervious Clay fill sloping 1:30 away from wall

Drainage as specified

DRAWING TITLE

Viking Below Ground Tanking - Torch -On Termination\_Behind cladding

NOTES:

\* All fixings, cladding and structure are indicative only unless notated  
 \* Drawings to be read with Viking Specifications

INFORMATION

Viking Tanking systems are BRANZ Appraised - 864

DRAWING

INFORMATION ONLY

Scale:	Date:	Drawn:	Viking
Not to Scale	01/03/2022		
Detail Ref:			<b>VIK_BGT_TO_34</b>

