

Viking Polyiso Insulation sheet

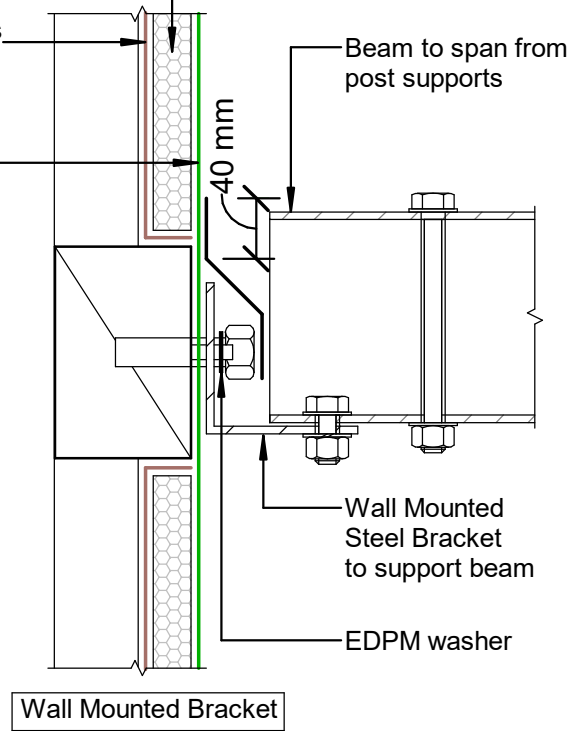
Viking Vapour Barrier, install as per manufacturers instructions.

Viking Enviroclad TPO waterproofing membrane 1.52 mm thick, install as per manufacturers instructions

Viking Enviroclad TPO waterproofing membrane 1.52 mm thick, install as per manufacturers instructions

Viking PIR Polyiso Insulation

Viking Vapour Barrier, install as per manufacturers instructions



NOTE:
 Post and Brackets are SED.
 Spaced according to weight and beam spanning abilities.
 Not supplied by Viking Roofspec.

DRAWING TITLE

Viking WarmRoof - Enviroclad
 Penetration_Post or Rail for Plant Room equipment

NOTES:

- * Angle fillets are not required at upstands for Enviroclad
- * All fixings, cladding and structure are indicative only unless noted
- * All details to be read in conjunction with Viking Specifications

WarmRoof System is Branz Appraised - 713

DRAWING

INFORMATION ONLY

Scale:	Date:	Drawn:	Viking
Not to Scale	01/03/2022		

Detail Ref: **VIK_WRE_011_PENEPOST**