

**NOTE:**

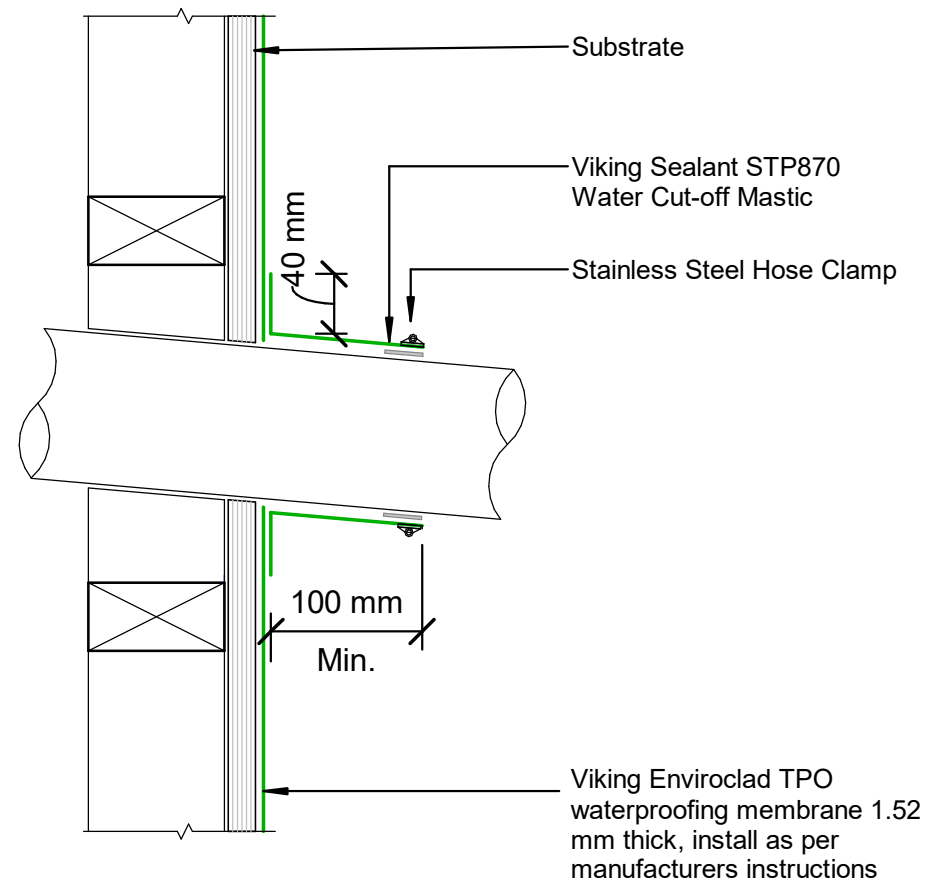
Substrate to comply with current Viking Roofspec Masterspec specification  
Substrate Checksheet available from [www.vikingroofspec.co.nz](http://www.vikingroofspec.co.nz)

**NOTE:**

A 5° fall is recommended for pipe penetrations

**NOTE:**

Membrane is suitable to be installed to pipes that will reach max. temperatures of 70° celcius



DRAWING TITLE

Viking Enviroclad  
Penetration\_Horizontal pipe

NOTES:

\* Angle fillets are not required at upstands for Enviroclad  
\* All fixings, cladding and structure are indicative only unless notated



Enviroclad  
systems are  
CodeMarked

DRAWING

INFORMATION ONLY

Scale:	Date:	Drawn:	Viking
Not to Scale	23/11/2020		

Detail Ref: **VIK\_ENV\_005A\_HORPIPE**

Roofspec  
**Viking**  
Taking care of detail