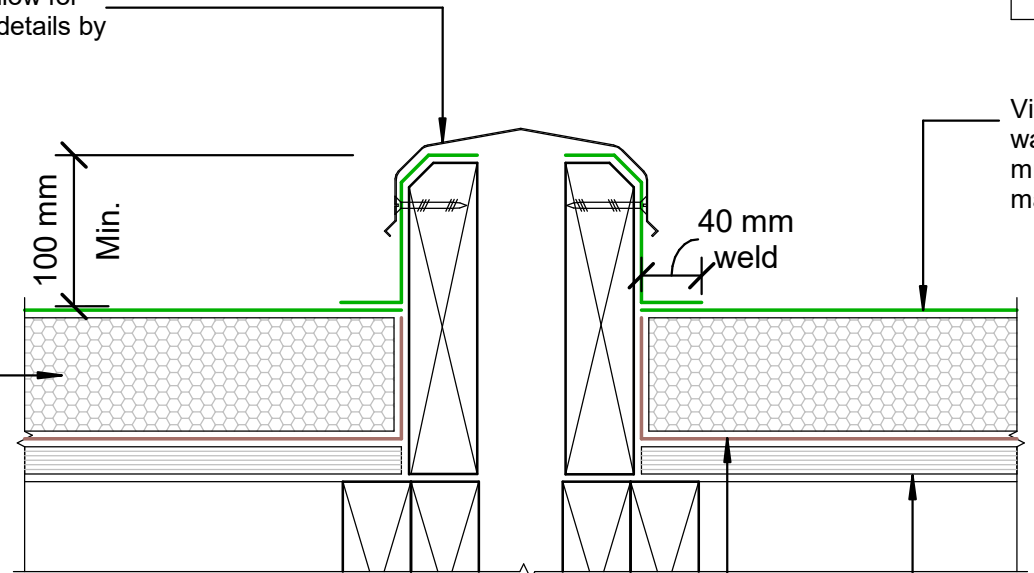


NOTE:
 Substrate to comply with current
 Viking Roofspec Masterspec
 specification
 Substrate Checksheet available
 from www.vikingroofspec.co.nz

Specific Seismic Joint by Designer

Metal Cap Flashing to allow for
 movement specific site details by
 Designer

Viking Enviroclad TPO
 waterproofing membrane 1.52
 mm thick, install as per
 manufacturers instructions



Viking PIR Polyiso Insulation

40 mm
 weld

100 mm
 Min.

Substrate

Viking Vapour Barrier, install as
 per manufacturers instructions

Seismic Gap determined by designer

DRAWING TITLE

Viking WarmRoof - Enviroclad
 Intersection_Seismic Gap Generic

NOTES:

- * Angle fillets are not required at upstands for Enviroclad
- * All fixings, cladding and structure are indicative only unless noted
- * All details to be read in conjunction with Viking Specifications

WarmRoof System is Branz
 Appraised - 713

DRAWING

INFORMATION ONLY

Scale:	Date:	Drawn:	Viking
Not to Scale	01/03/2022		
Detail Ref: VIK_WRE_063_INTSSEIS			

