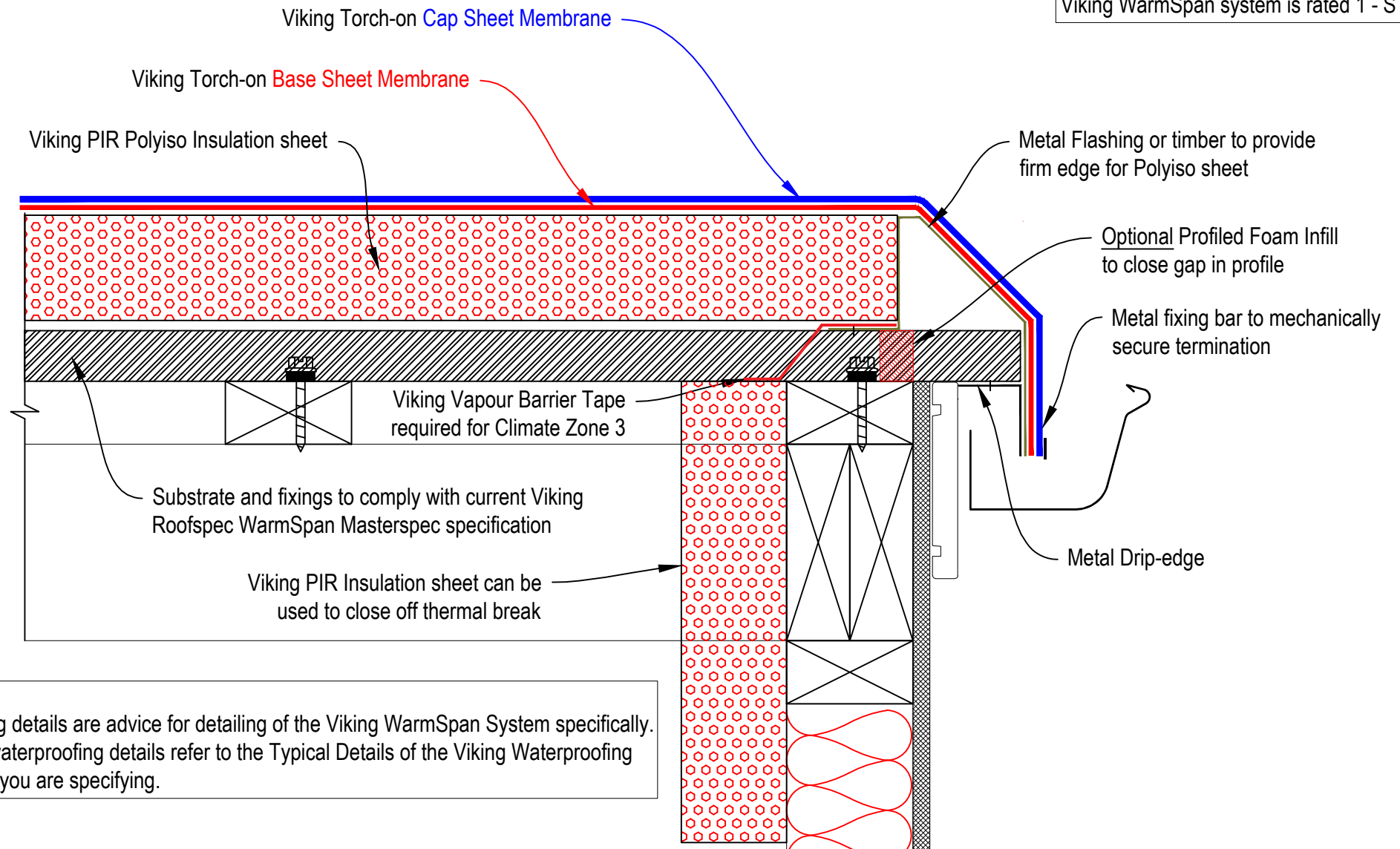


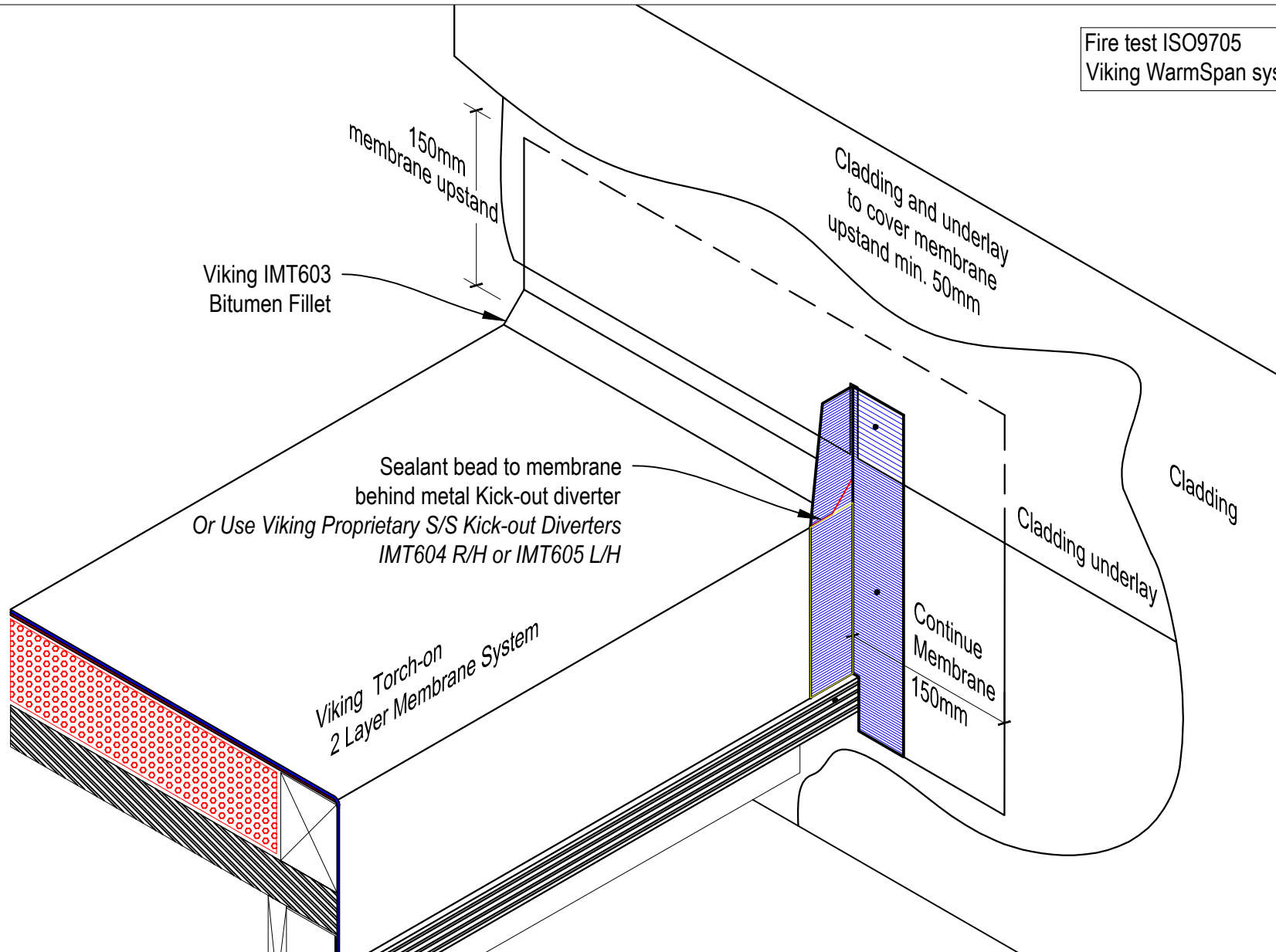
Fire test ISO9705
 Viking WarmSpan system is rated 1 - S



NOTE:
 The following details are advice for detailing of the Viking WarmSpan System specifically. For further waterproofing details refer to the Typical Details of the Viking Waterproofing System that you are specifying.

	DRAWING TITLE	NOTES:	DRAWING STATUS		
	Viking WarmSpan with Viking Torch-on 2 layer membrane System Drip Edge Detail	Substrate Indicative Only	INFORMATION ONLY		
			Not to Scale	DATE 05/06/2018	Detail Ref.
			DRAWN Viking	VWS01VT	A

Fire test ISO9705
 Viking WarmSpan system is rated 1 - S



Viking IMT603
 Bitumen Fillet

150mm
 membrane upstand

Cladding and underlay
 to cover membrane
 upstand min. 50mm

Sealant bead to membrane
 behind metal Kick-out diverter
 Or Use Viking Proprietary S/S Kick-out Diverter
 IMT604 R/H or IMT605 L/H

Viking Torch-on
 2 Layer Membrane System

Continue
 Membrane
 150mm

Cladding underlay

Cladding

DRAWING TITLE

NOTES:

DRAWING STATUS



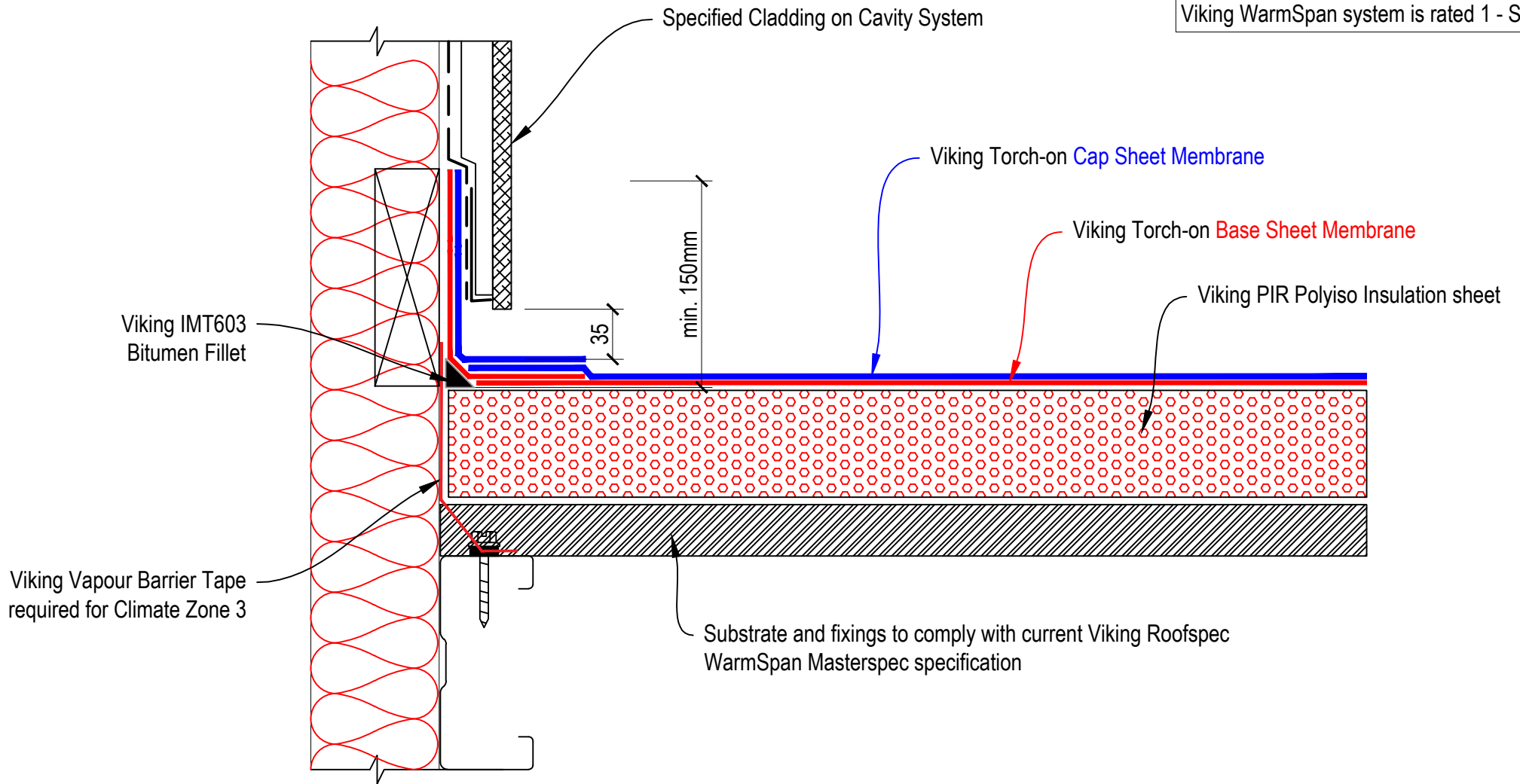
Viking WarmSpan with Viking Torch-on 2 layer membrane System
 Diverter Detail

Substrate Indicative Only

INFORMATION ONLY

Not to Scale	DATE 05/06/2018	Detail Ref.	ISSUE
DRAWN	Viking	VWS02VT	A

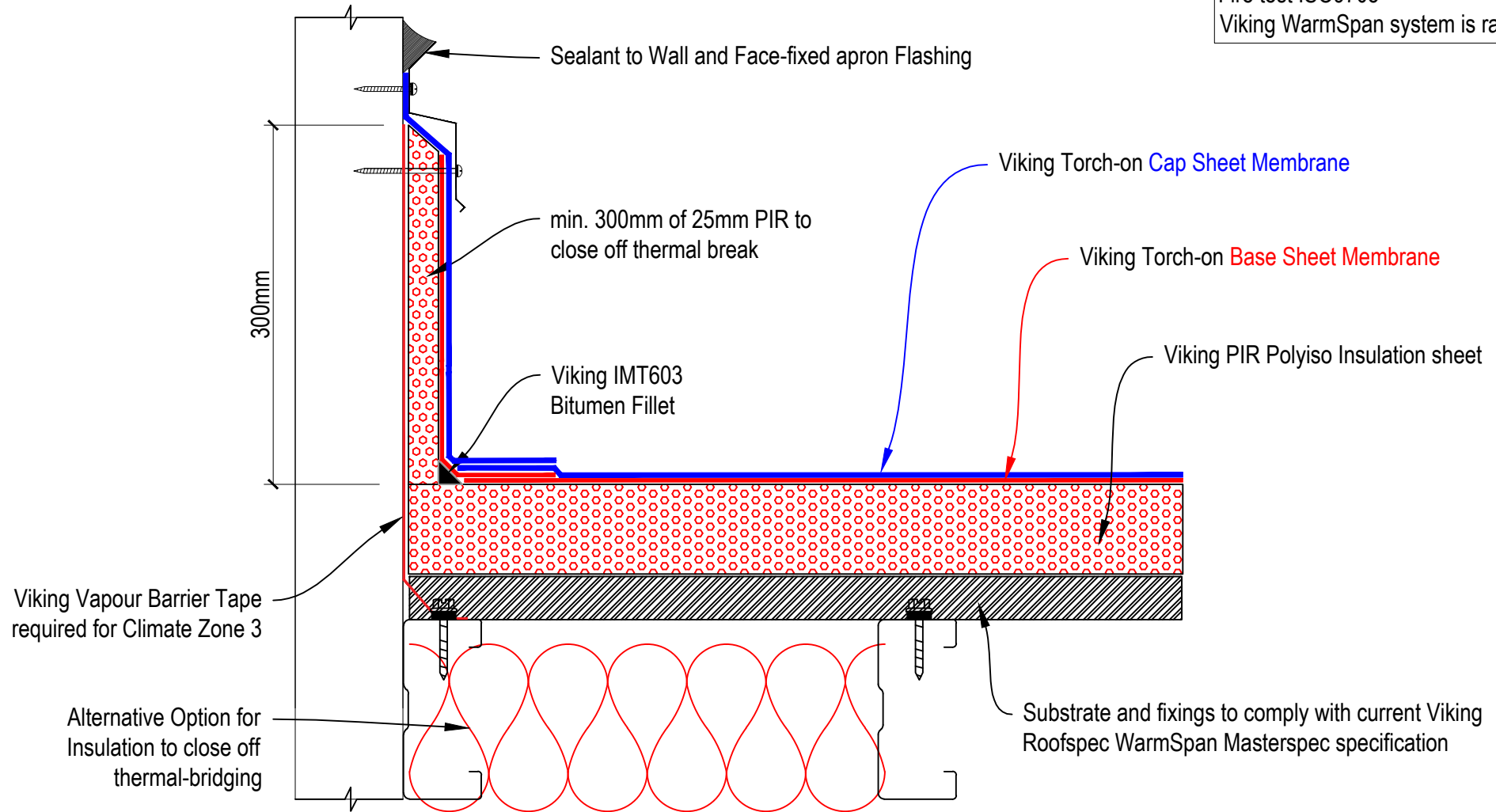
Fire test ISO9705
 Viking WarmSpan system is rated 1 - S



DRAWING TITLE	NOTES:
Viking WarmSpan with Viking Torch-on 2 layer membrane System Cavity Wall Upstand	Substrate Indicative Only

DRAWING STATUS			
INFORMATION ONLY			
Not to Scale	DATE 05/06/2018	Detail Ref.	ISSUE
DRAWN	Viking	VWS03VT	A

Fire test ISO9705
 Viking WarmSpan system is rated 1 - S



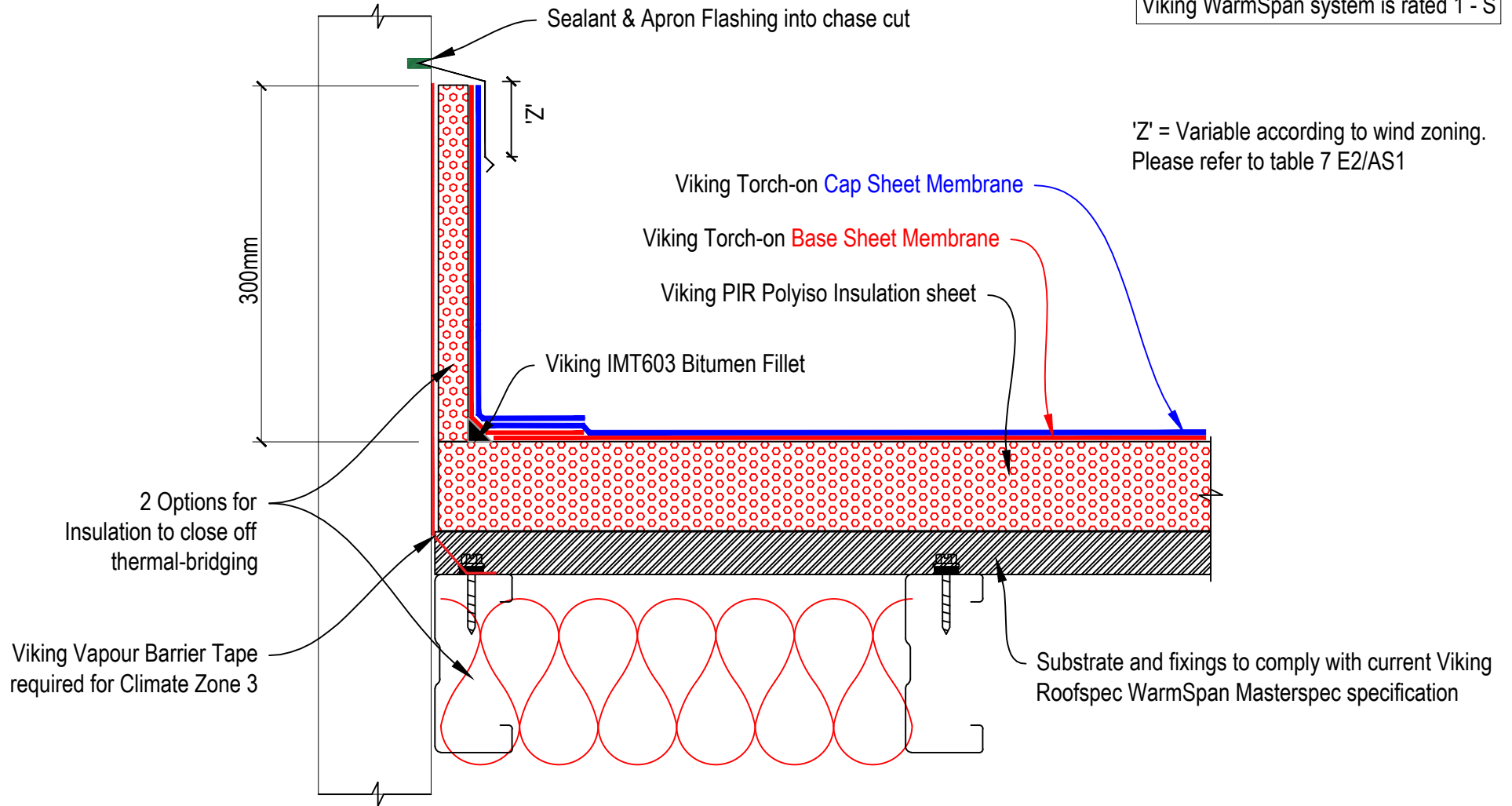
DRAWING TITLE
Viking WarmSpan with Viking Torch-on 2 layer membrane System Face-fixed Wall Termination

NOTES:
Substrate Indicative Only

DRAWING STATUS			
INFORMATION ONLY			
Not to Scale	DATE 05/06/2018	Detail Ref.	ISSUE
DRAWN Viking		VWS04VT	A

Fire test ISO9705
 Viking WarmSpan system is rated 1 - S

'Z' = Variable according to wind zoning.
 Please refer to table 7 E2/AS1

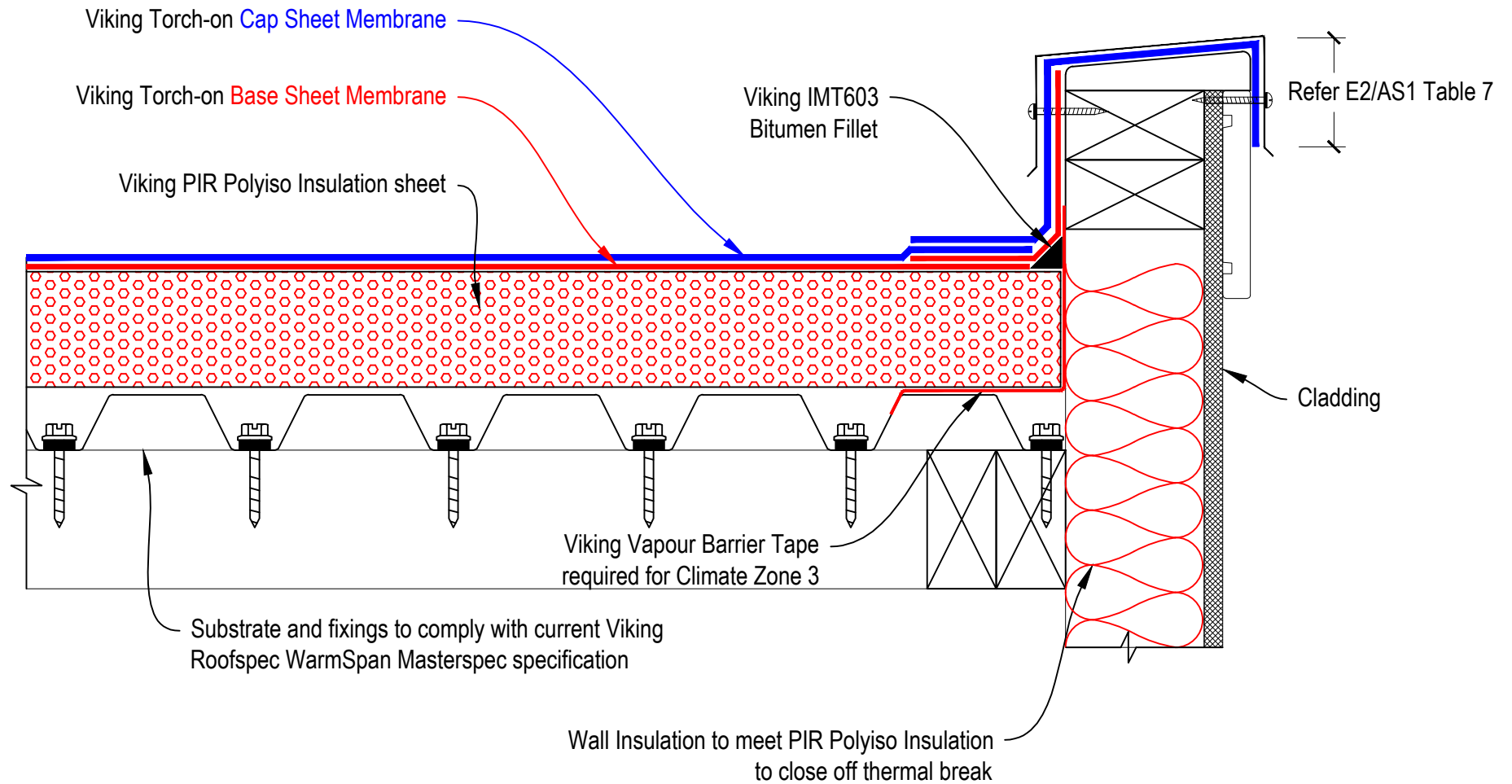


DRAWING TITLE
Viking WarmSpan with Viking Torch-on 2 layer membrane System Chase Flashing on Upstand

NOTES:
Substrate Indicative Only

DRAWING STATUS			
INFORMATION ONLY			
Not to Scale	DATE 05/06/2018	Detail Ref.	ISSUE
DRAWN	Viking	VWS05VT	A

Fire test ISO9705
 Viking WarmSpan system is rated 1 - S

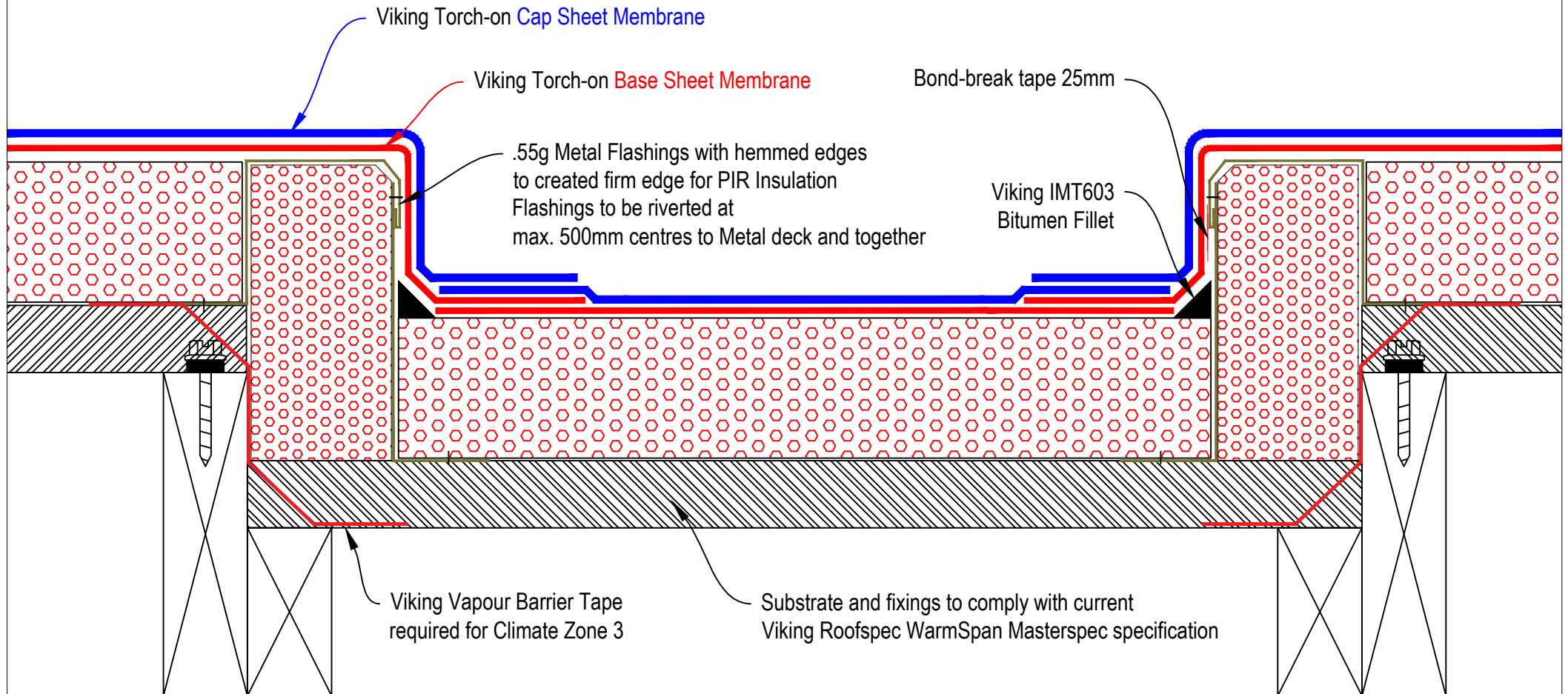


DRAWING TITLE
Viking WarmSpan with Viking Torch-on 2 layer membrane System Parapet or Barge Edge Detail

NOTES:
Substrate Indicative Only

DRAWING STATUS			
INFORMATION ONLY			
Not to Scale	DATE 05/06/2018	Detail Ref.	ISSUE
DRAWN	Viking	VWS06VT	A

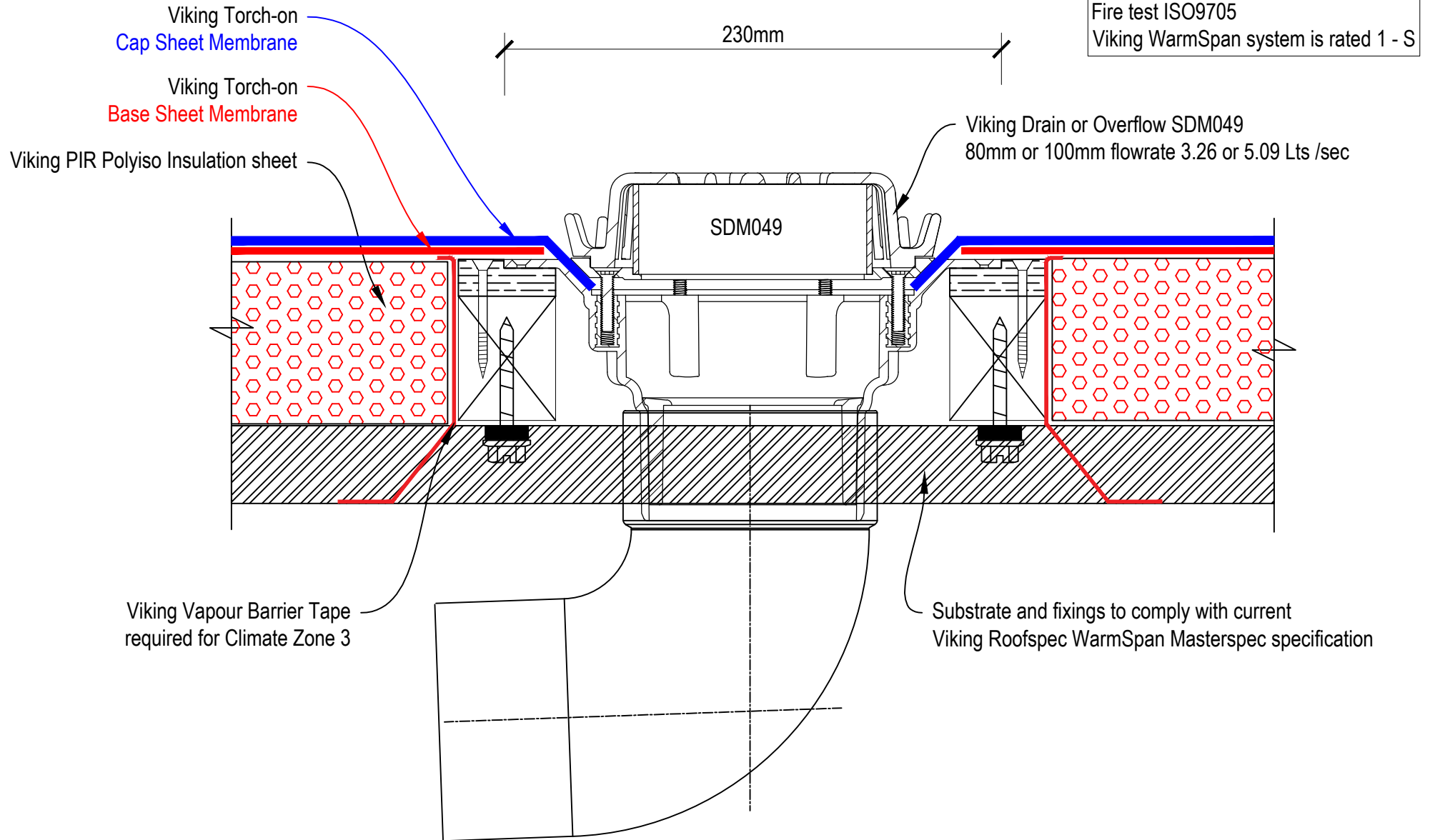
Fire test ISO9705
 Viking WarmSpan system is rated 1 - S



DRAWING TITLE
Viking WarmSpan with Viking Torch-on 2 layer membrane System Internal Gutter

NOTES:
Substrate Indicative Only

DRAWING STATUS			
INFORMATION ONLY			
Not to Scale	DATE 05/06/2018	Detail Ref.	ISSUE
DRAWN	Viking	VWS07VT	A

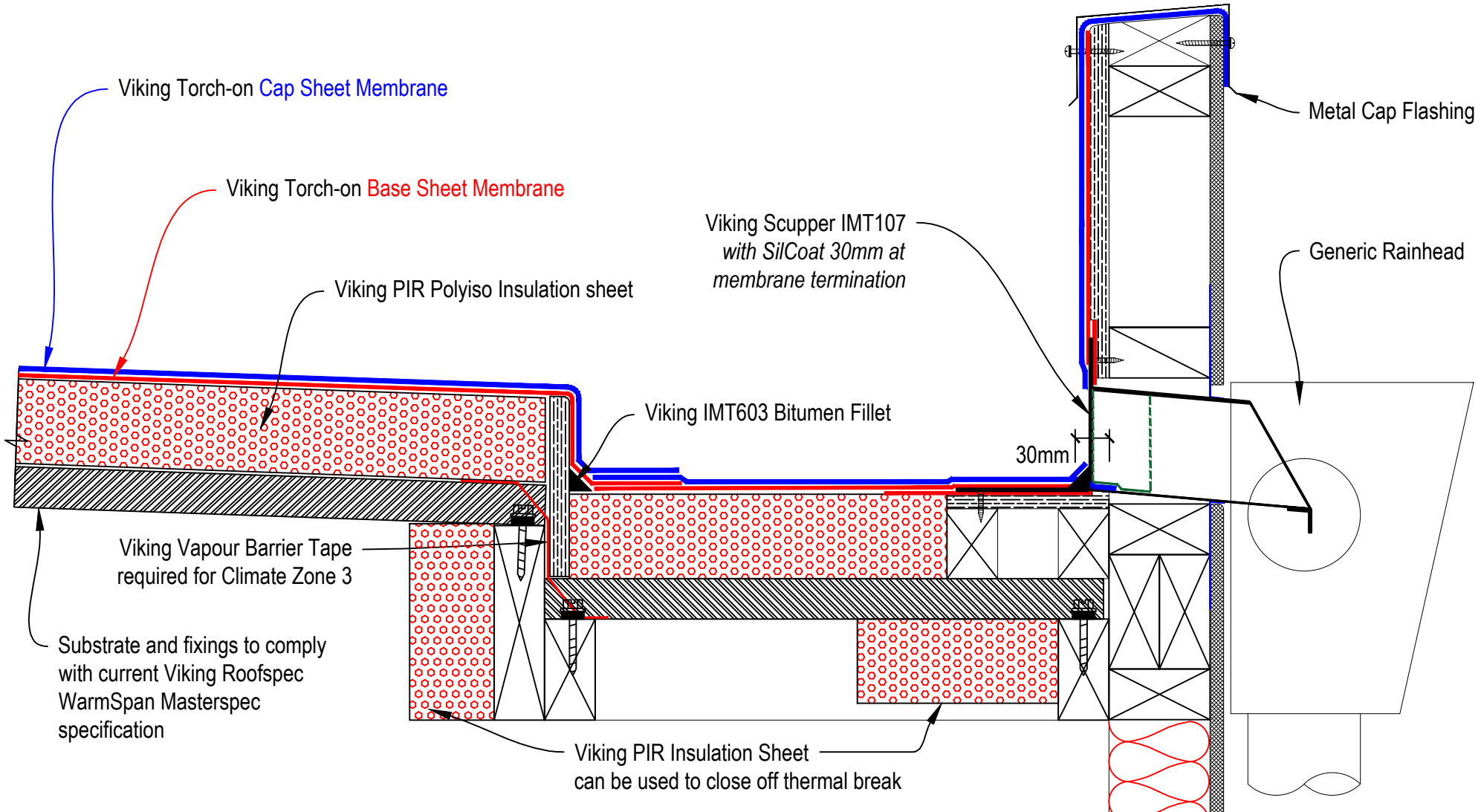


DRAWING TITLE
Viking WarmSpan with Viking Torch-on 2 layer membrane System Drain or Overflow

NOTES:
Substrate Indicative Only

DRAWING STATUS			
INFORMATION ONLY			
Not to Scale	DATE 05/06/2018	Detail Ref.	ISSUE
DRAWN	Viking	VWS08VT	A

Fire test ISO9705
 Viking WarmSpan system is rated 1 - S

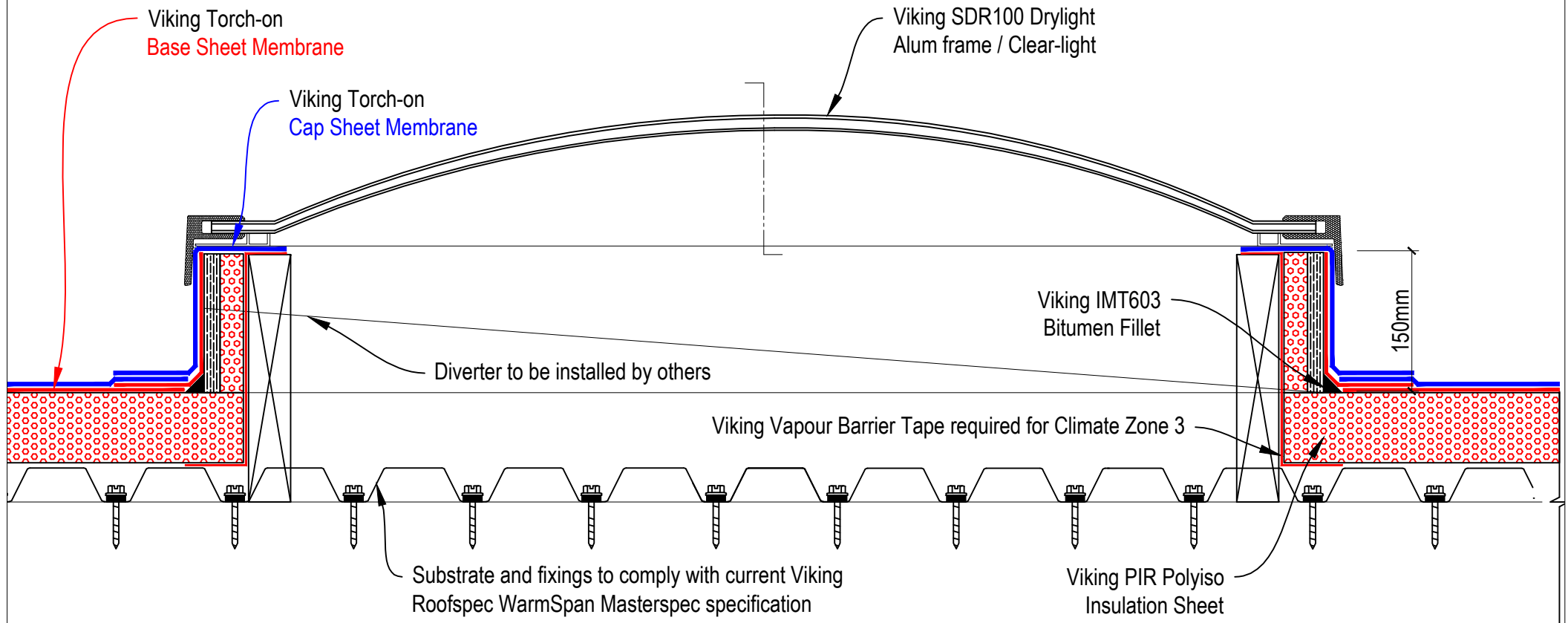


DRAWING TITLE
 Viking WarmSpan with Viking Torch-on 2 layer membrane System
 Parapet Gutter with Scupper

NOTES:
 Substrate Indicative Only

DRAWING STATUS			
INFORMATION ONLY			
Not to Scale	DATE 05/06/2018	Detail Ref.	ISSUE
DRAWN	Viking	VWS09VT	A

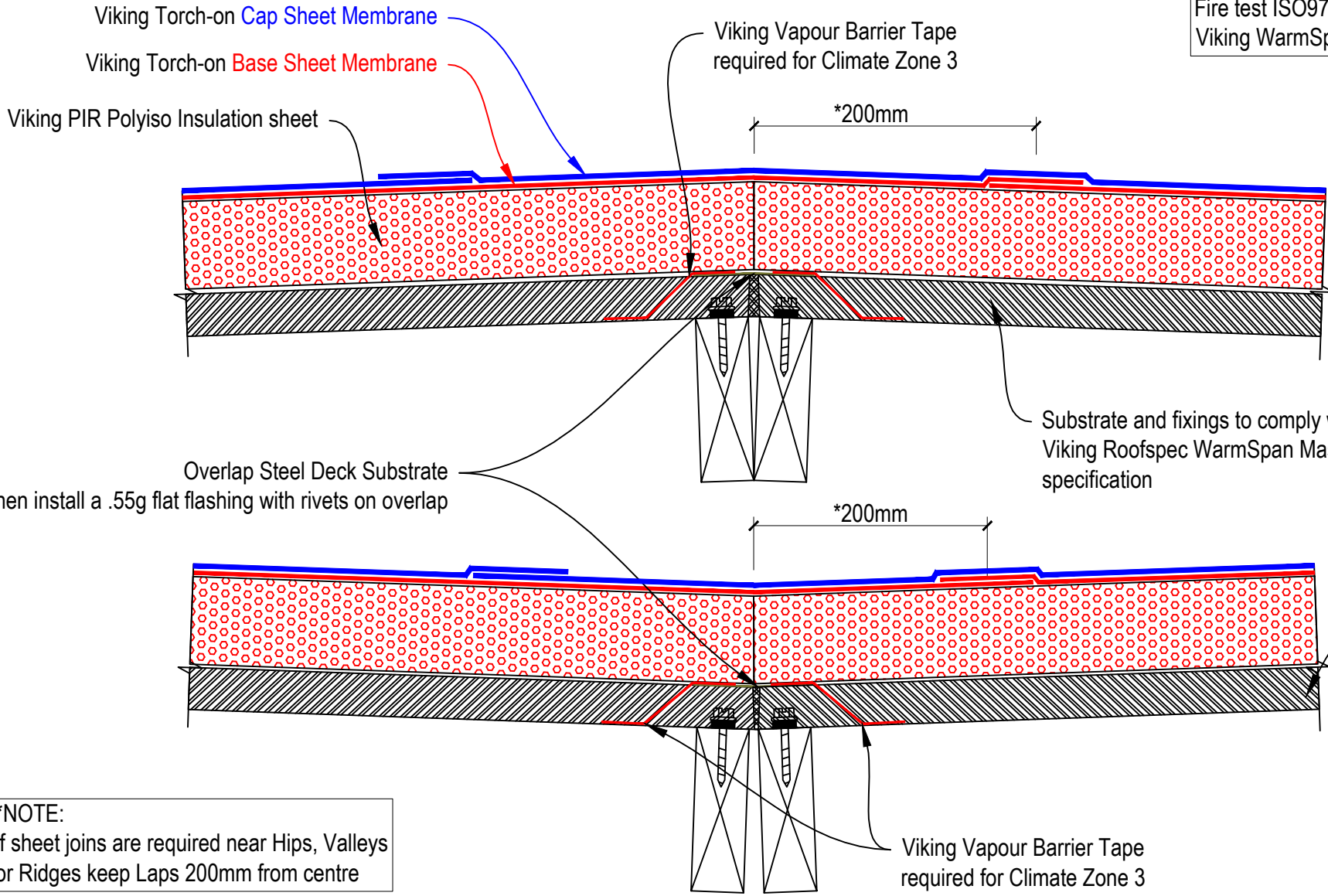
Fire test ISO9705
 Viking WarmSpan system is rated 1 - S



DRAWING TITLE
Viking WarmSpan with Viking Torch-on 2 layer membrane System Skylight Detail

NOTES:
Substrate Indicative Only

DRAWING STATUS			
INFORMATION ONLY			
Not to Scale	DATE 05/06/2018	Detail Ref.	ISSUE
DRAWN	Viking	WVS10VT	A



Fire test ISO9705
 Viking WarmSpan system is rated 1 - S

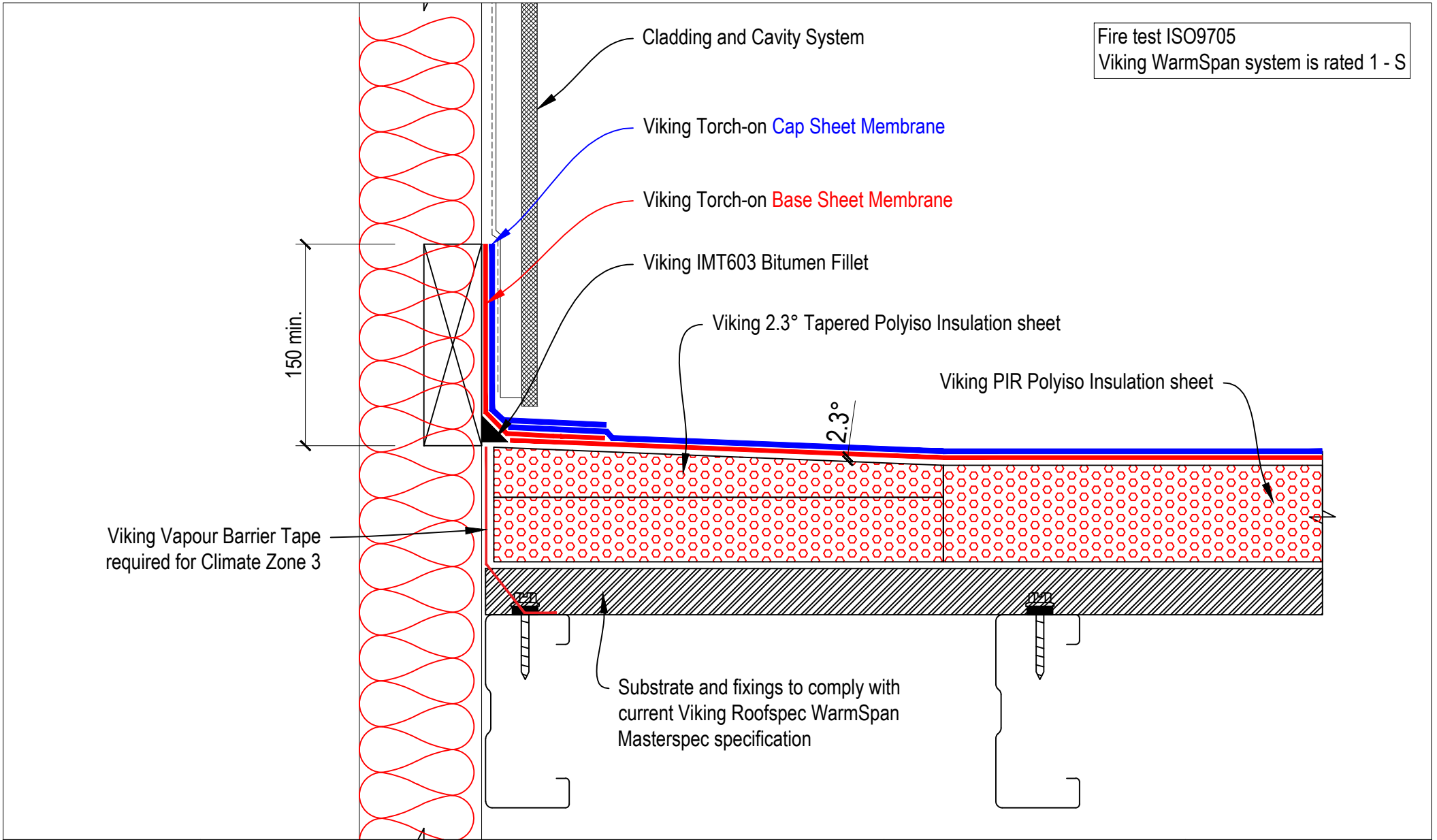
***NOTE:**
 If sheet joints are required near Hips, Valleys
 or Ridges keep Laps 200mm from centre



DRAWING TITLE
Viking WarmSpan with Viking Torch-on 2 layer membrane System Hip / Ridge or Valley Detail

NOTES:
Substrate Indicative Only

DRAWING STATUS			
INFORMATION ONLY			
Not to Scale	DATE 05/06/2018	Detail Ref.	ISSUE
DRAWN	Viking	VWS11VT	A



Fire test ISO9705
 Viking WarmSpan system is rated 1 - S

150 min.

Viking Vapour Barrier Tape
 required for Climate Zone 3

Substrate and fixings to comply with
 current Viking Roofspec WarmSpan
 Masterspec specification

Viking PIR Polyiso Insulation sheet

Viking 2.3° Tapered Polyiso Insulation sheet

Viking IMT603 Bitumen Fillet

Viking Torch-on Base Sheet Membrane

Viking Torch-on Cap Sheet Membrane

Cladding and Cavity System

2.3°

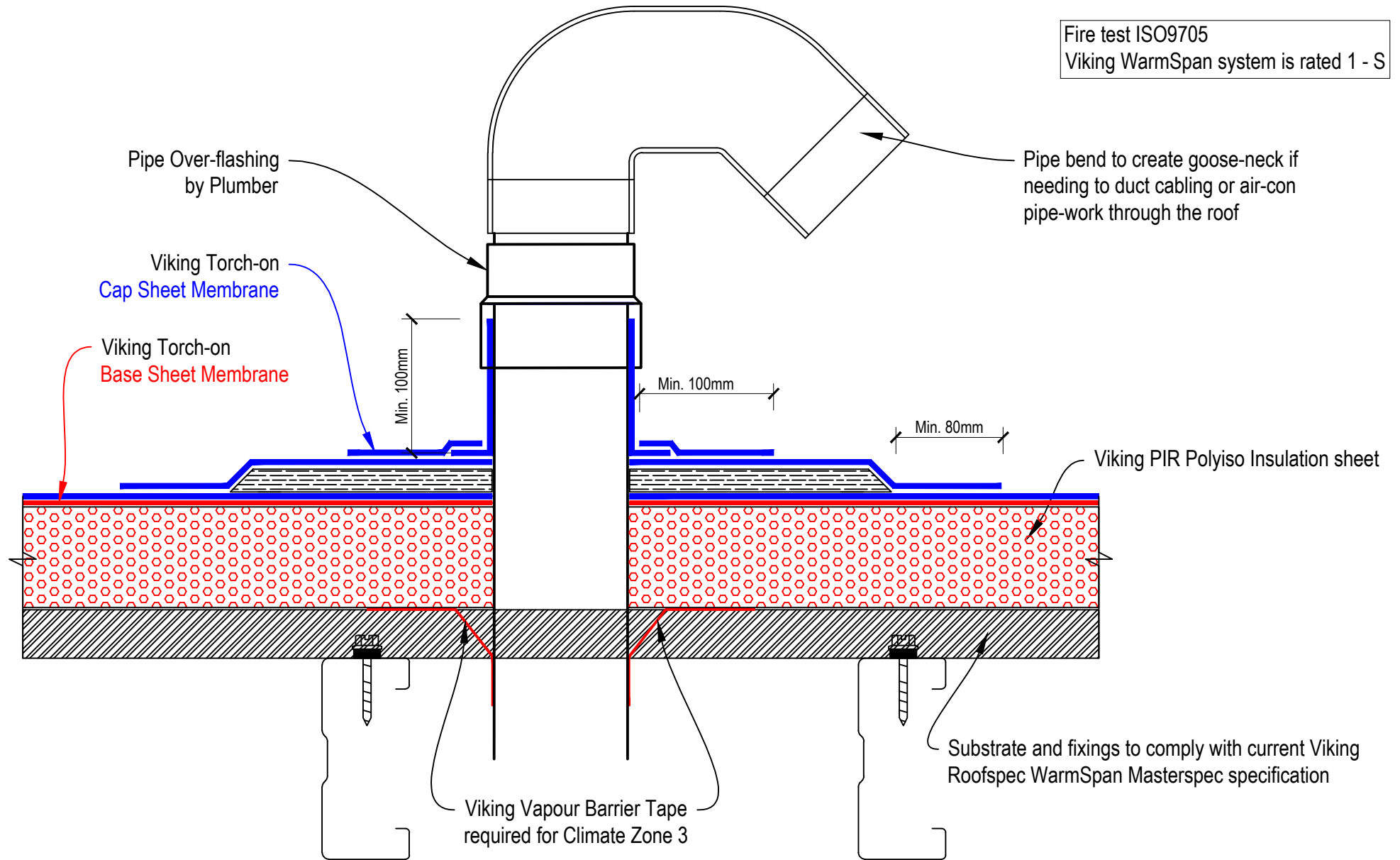


DRAWING TITLE
 Viking WarmSpan with Viking Torch-on 2 layer membrane System
 Cricket detail with 2.3° Tapered PIR Panel

NOTES:
 Substrate Indicative Only

DRAWING STATUS			
INFORMATION ONLY			
Not to Scale	DATE 05/06/2018	Detail Ref.	ISSUE
DRAWN	Viking	VWS12VT	A

Fire test ISO9705
 Viking WarmSpan system is rated 1 - S

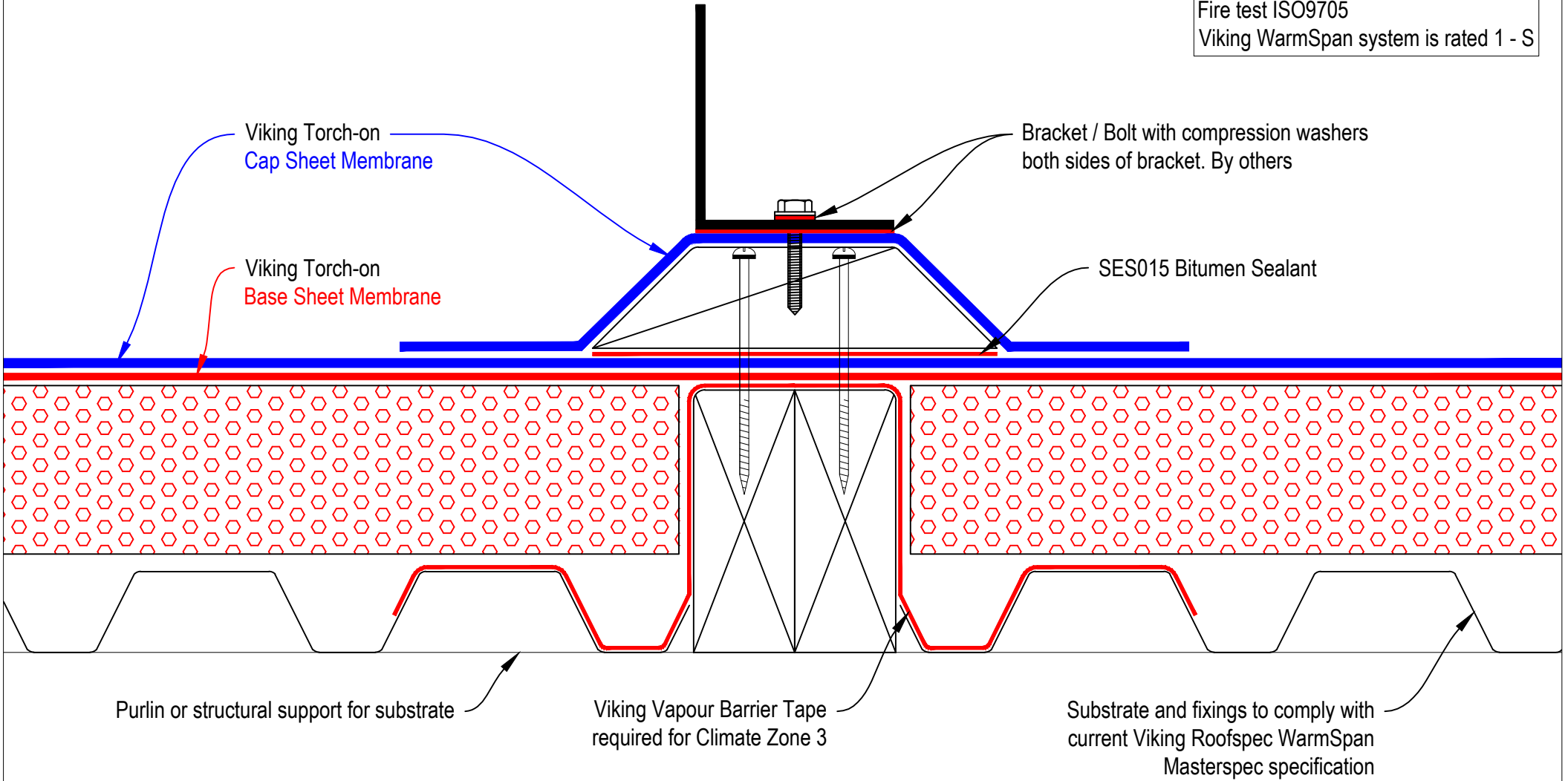


DRAWING TITLE
 Viking WarmSpan with Viking Torch-on 2 layer membrane System
 Pipe Penetration / services

NOTES:
 Substrate Indicative Only

DRAWING STATUS			
INFORMATION ONLY			
Not to Scale	DATE 05/06/2018	Detail Ref.	ISSUE
DRAWN	Viking	VWS13VT	A

Fire test ISO9705
 Viking WarmSpan system is rated 1 - S



DRAWING TITLE
Viking WarmSpan with Viking Torch-on 2 layer membrane System Plinth Detail

NOTES:
Substrate Indicative Only

DRAWING STATUS			
INFORMATION ONLY			
Not to Scale	DATE 05/06/2018	Detail Ref.	ISSUE
DRAWN	Viking	VWS14VT	A

NOTE:
Refer to Safety Anchor supplier for specific fixing requirements

Fire test ISO9705
Viking WarmSpan system is rated 1 - S

PBI Anchor system supplied and installed by PBI Height Safety
Anchor base dimension 440x350

Bitumen Sealant fully surrounding PBI anchor base
Supplied and installed by PBI Height Safety

14G x 50mm Tek Screws with compression washer
to provide watertight seal supplied and installed by PBI

Bitumen Compatible Sealant
Viking SES015 Elastigum

Viking Torch-on
Cap Sheet Membrane

Viking Torch-on
Base Sheet Membrane

Viking PIR Polyiso Insulation sheet

Fixings to be determined by Anchor supplier

Structural support for Anchor Plinth

Viking Vapour Barrier Tape
required for Climate Zone 3

Substrate and fixings to comply with current Viking
Roofspec WarmSpan Masterspec specification

Purlin or structural support for substrate

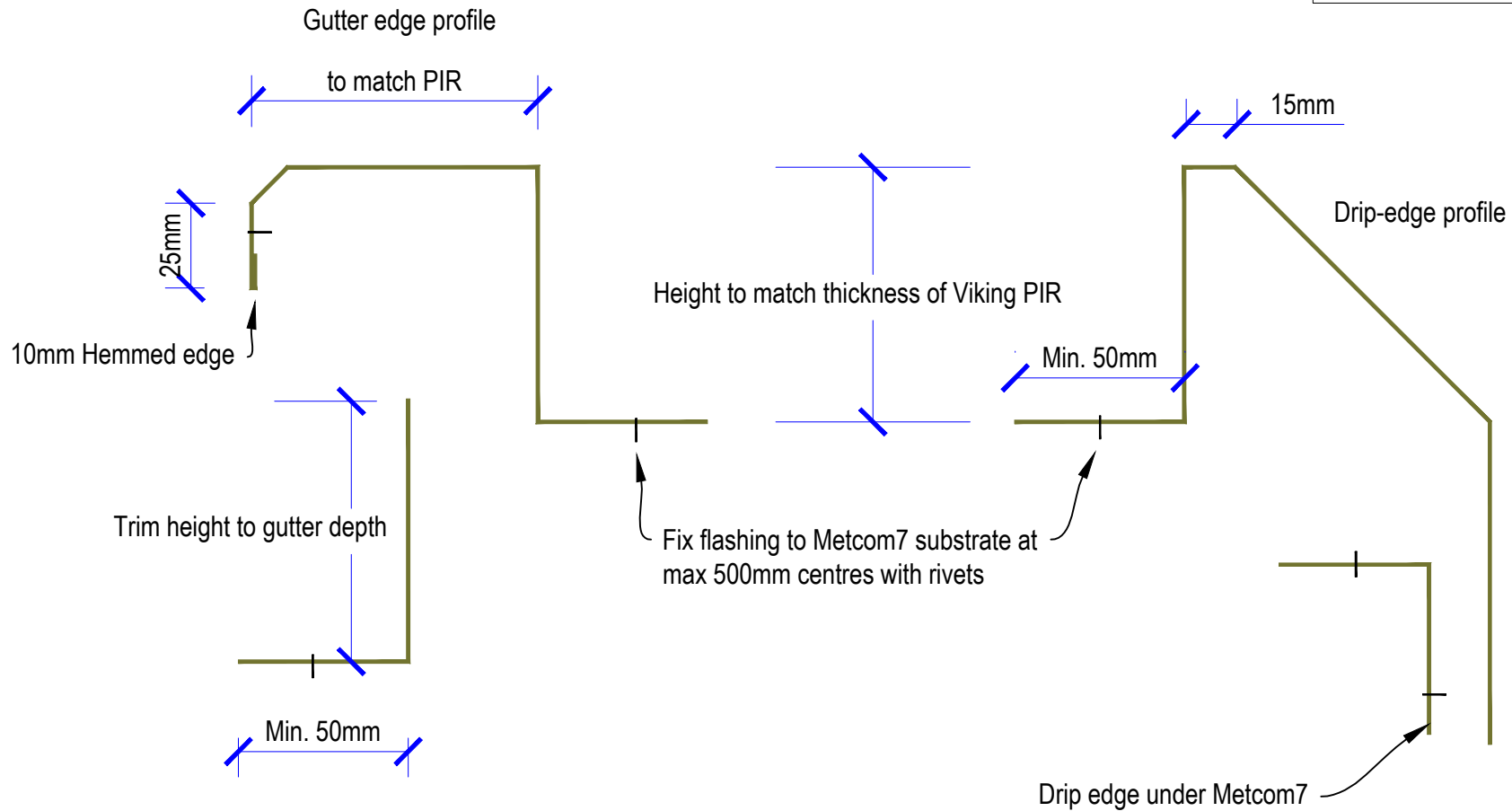


DRAWING TITLE
Viking WarmSpan with Viking Torch-on 2 layer membrane System PBI Anchor Plinth

NOTES:
Substrate Indicative Only

DRAWING STATUS			
INFORMATION ONLY			
Not to Scale	DATE 05/06/2018	Detail Ref.	ISSUE
DRAWN	Viking	WVS16VT	A

Fire test ISO9705
 Viking WarmSpan system is rated 1 - S



NOTE: These are indications for flashings only. Not supplied by Viking Roofspec.
 Flashing 55g metal riveted to Metcom7 substrate and to other flashings at 500mm max centres Metcom7 profile is 36mm deep

	DRAWING TITLE	NOTES:	DRAWING STATUS		
	Viking WarmSpan Flashing dimensions	Substrate Indicative Only	INFORMATION ONLY		
			Not to Scale	DATE 15/10/2015	Detail Ref.
			DRAWN Viking	Flashings	ISSUE A