

NOTE:

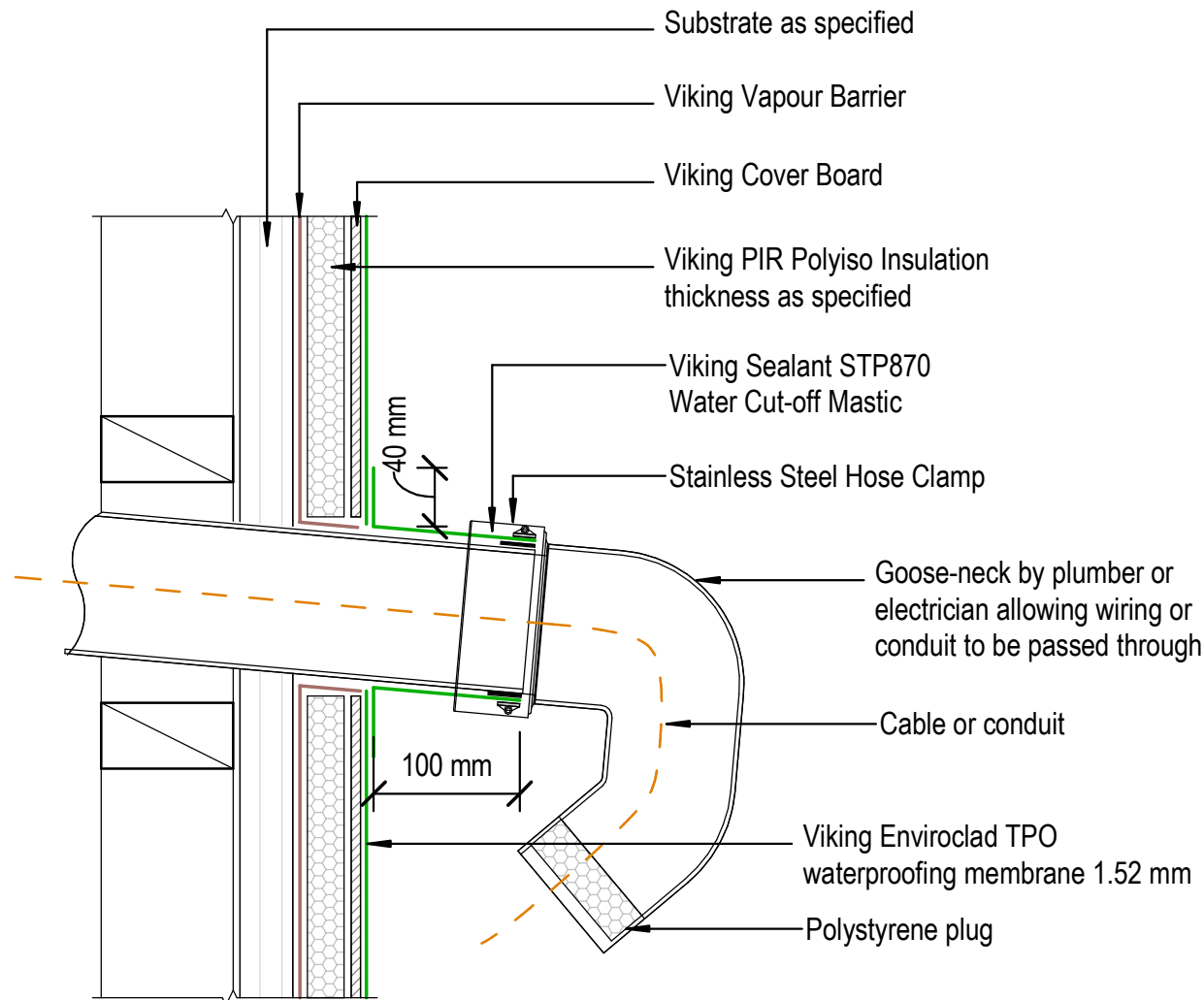
Substrate to comply with current Viking Roofspec Masterspec specification
Substrate Checksheet available from www.vikingroofspec.co.nz

NOTE:

A 5° fall is recommended for pipe penetrations

NOTE:

Membrane is suitable to be installed to pipes that will reach max. temperatures of 70° celcius



DRAWING TITLE

Viking WS2 - Enviroclad
Penetration_Horizontal ducting pipe

NOTES:

- * Angle fillets are not required at upstands for Enviroclad
- * All fixings, cladding and structure are indicative only unless notated
- * All details to be read in conjunction with Viking Specifications

Substrate and structure are indicative only

DRAWING STATUS

INFORMATION ONLY

Scale: Not to Scale	Date: 01/10/2022	Drawn: Viking
Detail Ref: VIK_WS2_ENV_006A_HORIDUCT		