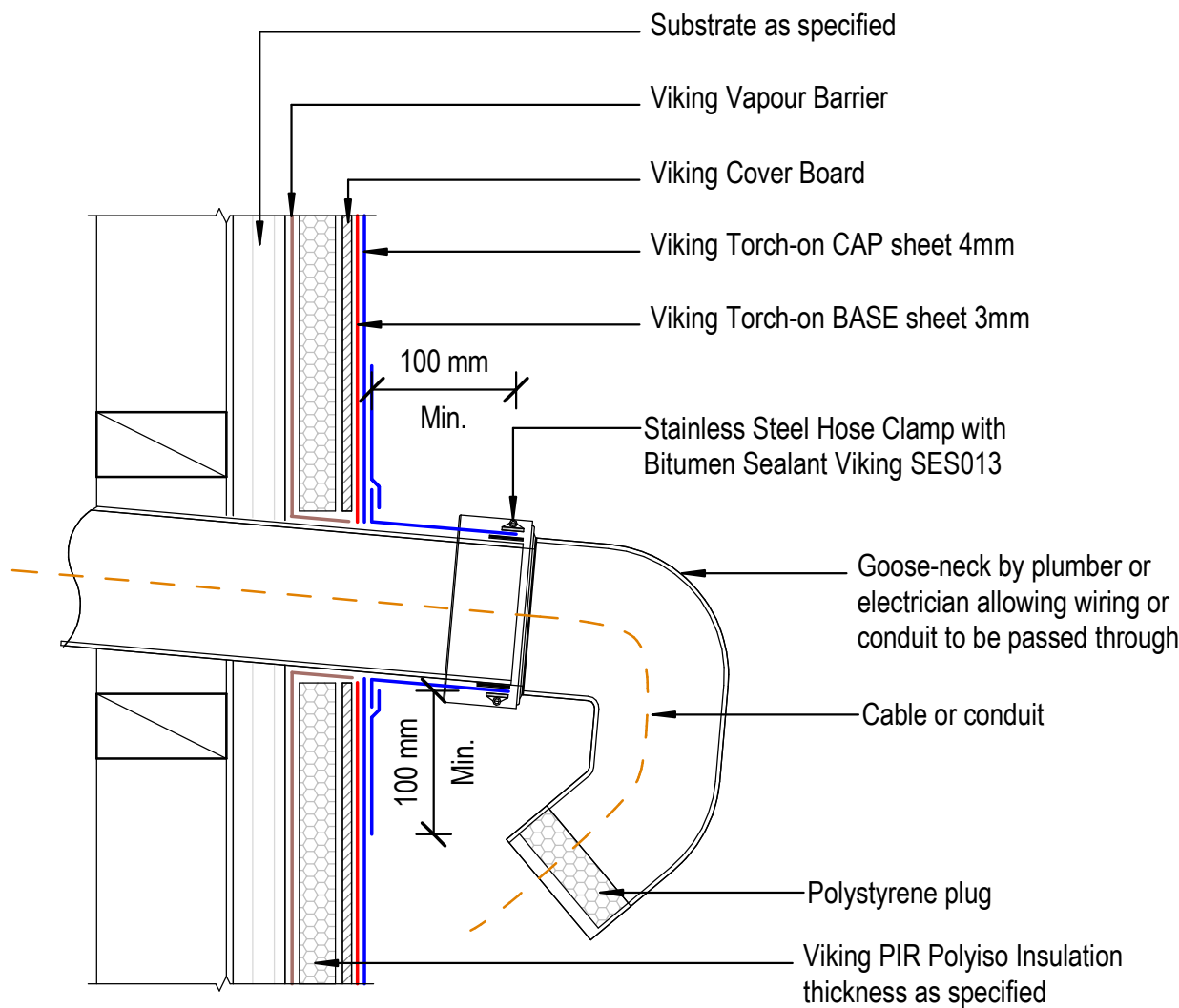



NOTE:  
 Substrate to comply with current Viking Roofspec  
 Masterspec specification  
 Substrate Checksheet available from  
[www.vikingroofspec.co.nz](http://www.vikingroofspec.co.nz)

NOTE:  
 A 5° fall is recommended for pipe penetrations



	DRAWING TITLE	NOTES: *Viking Waterproof Membrane as notated can be Viking Gemini, Lybra, Phoenix Super or Halley P. *All details to be read in conjunction with Viking Specifications.	DRAWING STATUS		
	Viking WS2 - Torch-On Penetration_Horizontal ducting pipe		INFORMATION ONLY		
	Substrate and structure are indicative only		Scale:	Date:	Drawn:
			Not to Scale	01/10/2022	Viking
			Detail Ref: <b>VIK_WS2_TOR_006A_HORIDUCT</b>		