

Round Support Bracket

Beam to span from post supports

Engineered Plant Mount support Brackets fixed to round posts above waterproofing.

40 mm

100 mm Min.

Viking Polyiso Insulation sheet

Viking Vapour Barrier, install as per manufacturers instructions.

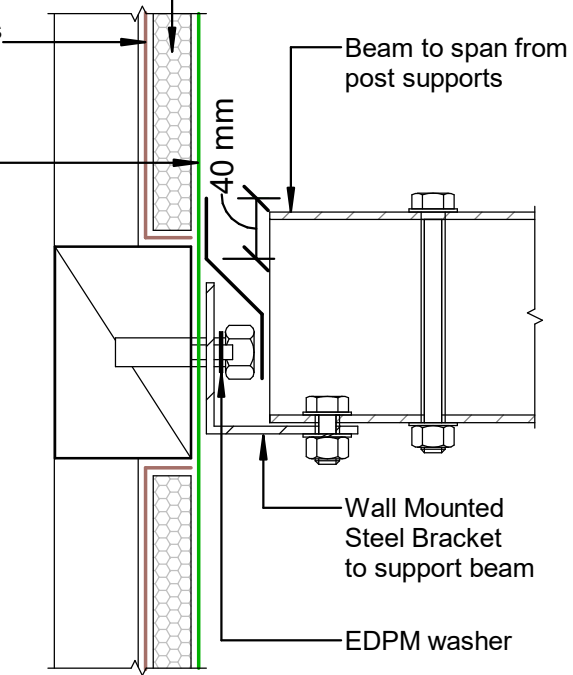
Viking Enviroclad TPO waterproofing membrane 1.52 mm thick, install as per manufacturers instructions

Viking Enviroclad TPO waterproofing membrane 1.52 mm thick, install as per manufacturers instructions

Viking PIR Polyiso Insulation

Substrate

Viking Vapour Barrier, install as per manufacturers instructions



Beam to span from post supports

40 mm

Wall Mounted Steel Bracket to support beam

EDPM washer

Wall Mounted Bracket

**NOTE:**  
 Post and Brackets are SED.  
 Spaced according to weight and beam spanning abilities.  
 Not supplied by Viking Roofspec.

DRAWING TITLE

Viking WarmSpan - Enviroclad  
 Penetration\_Post or Rail for Plant Room equipment

NOTES:

- \* Angle fillets are not required at upstands for Enviroclad
- \* All fixings, cladding and structure are indicative only unless notated
- \* All details to be read in conjunction with Viking Specifications

WarmSpan System is Branz Appraised - 713

DRAWING

INFORMATION ONLY

Scale:	Date:	Drawn:	Viking
Not to Scale	01/03/2022		

Detail Ref: **VIK\_WSE\_011\_PENEPOST**

