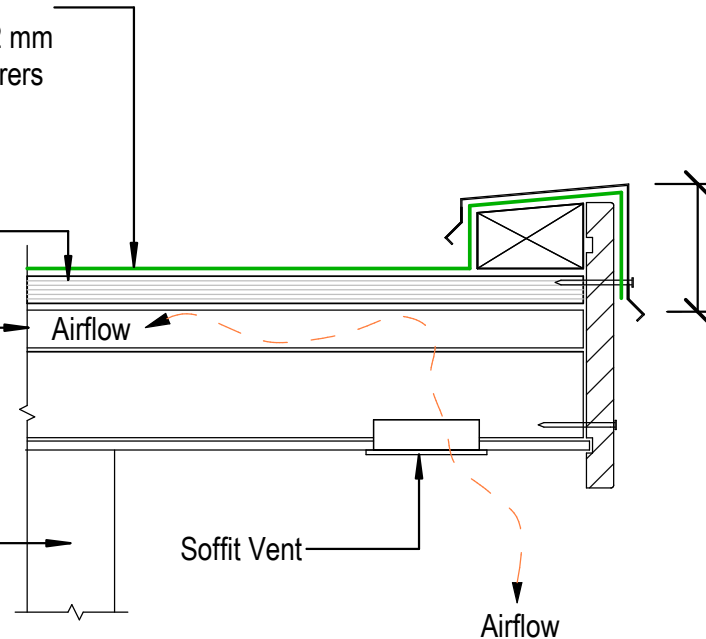


Viking Enviroclad TPO waterproofing membrane 1.52 mm thick, install as per manufacturers instructions

Substrate

Castellated Timber Cavity Batten CCA Treated for cross ventilation between substrate and insulation

Selected exterior cladding installed as per manufactures specifications



Refer to Table 7 E2/AS1

NOTE:
Substrate to comply with current Viking Roofspec Masterspec specification
Substrate Checksheet available from www.vikingroofspec.co.nz

NOTE: Soffit Vents may be louvre vents or others

NOTE: VENTING
Alternatively vent through Soffit or through top of roof with Viking Cavity Vents

DRAWING TITLE

Viking Enviroclad
Ventilation_Cavity vent through Soffit

NOTES:

* Angle fillets are not required at upstands for Enviroclad
* All fixings, cladding and structure are indicative only unless notated

CodeMark

Cert # GM-CMNZ30058
Cert # BV-CMNZ70176
Enviroclad systems are CodeMarked

DRAWING

INFORMATION ONLY

Scale:	Date:	Drawn:	Viking
Not to Scale	23/11/2020		
Detail Ref:			VIK_ENV_021B_VENTSOFF

Viking Roofspec
Taking care of detail