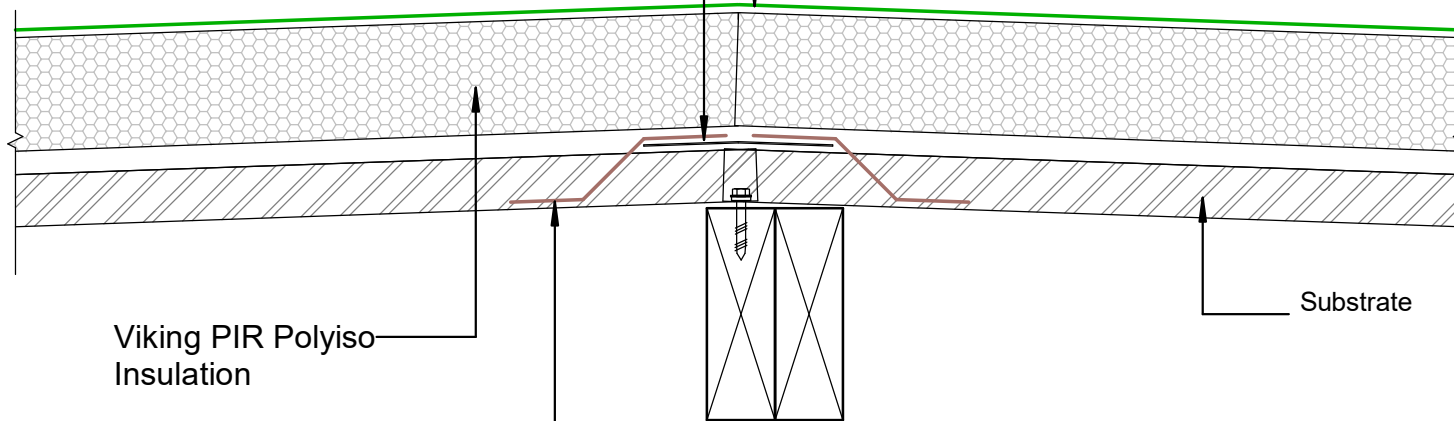


Viking Enviroclad TPO
waterproofing membrane 1.52
mm thick, install as per
manufacturers instructions

.55g Flat Flashing with Rivets on Overlap

NOTE:
Substrate to comply with current
Viking Roofspec Masterspec
specification
Substrate Checksheet available
from www.vikingroofspec.co.nz



Viking PIR Polyiso
Insulation

Viking Vapour Barrier, install as
per manufacturers instructions

Substrate

DRAWING TITLE

Viking WarmSpan - Enviroclad
Intersection_Ridge / Hip

NOTES:

- * Angle fillets are not required at upstands for Enviroclad
- * All fixings, cladding and structure are indicative only unless notated
- * All details to be read in conjunction with Viking Specifications

WarmSpan System is Branz
Appraised - 713

DRAWING

INFORMATION ONLY

Scale:	Date:	Drawn:	Viking
Not to Scale	01/03/2022		

Detail Ref: **VIK_WSE_064_INTSRIDG**