

Viking Drainage Protection Board

Viking Peel & Stick Tanking membrane installed per manufacturers instructions

Substrate with Viking Primer

Viking Peel & Stick membrane under-flashed 300mm wide min. with Bitumen Fillet IMT603

Drainage aggregate as specified

Drainage Pipe with filter fabric as specified

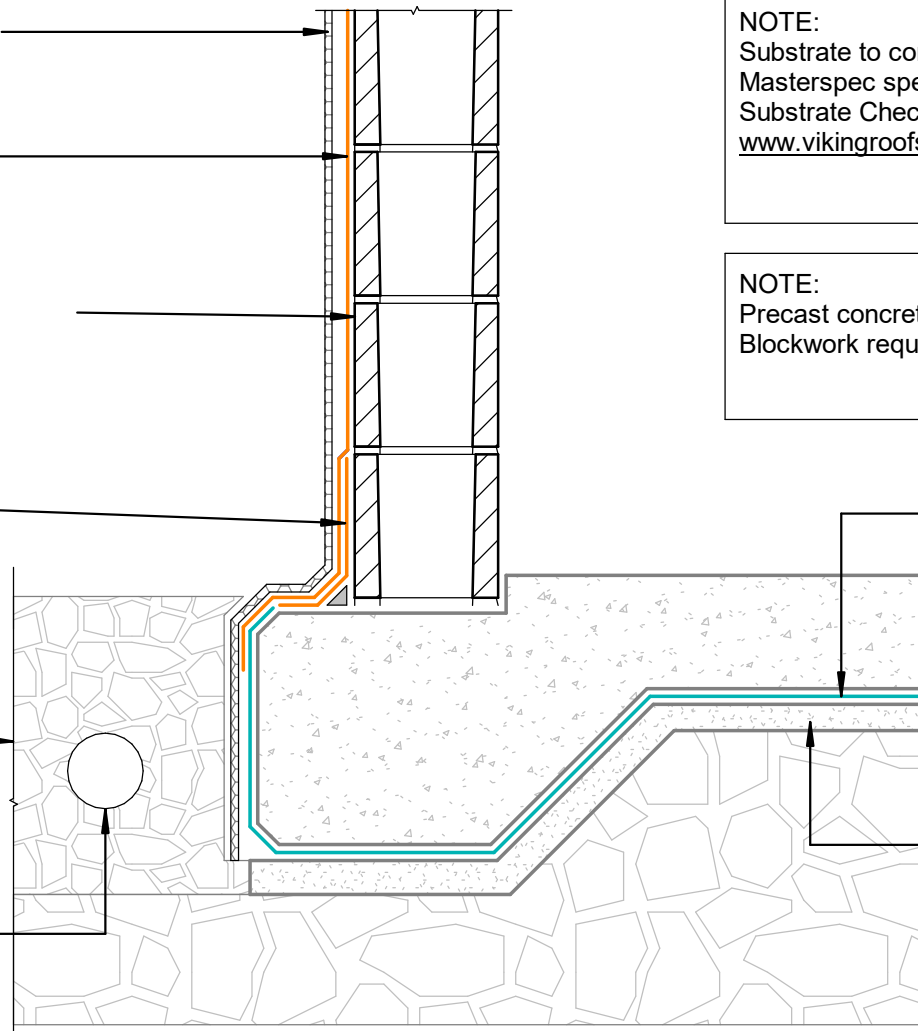
NOTE:
Substrate to comply with current Viking Roofspec Masterspec specification
Substrate Checksheet available from www.vikingroofspec.co.nz

NOTE:
Precast concrete with no voids
Blockwork requires a flush finish to side of tanking

Viking Under-slab Tanking membrane, installed as per manufacturers instructions

Tidy Slab or compacted sand fines

Compacted Base



DRAWING TITLE

Viking Tanking - Peel & Stick
Junction_Wall to Slab with NO DPM

NOTES:

* All fixings, cladding and structure are indicative only unless notated

* Drawings to be read with Viking Specifications

INFORMATION

Viking Tanking systems are BRANZ Appraised - 826

DRAWING

INFORMATION ONLY

Scale:	Date:	Drawn:	Viking
Not to Scale	01/03/2022		
Detail Ref:			VIK_BGT_PS_02

