

NOTE:
 Substrate to comply with current
 Viking Roofspec Masterspec
 specification
 Substrate Checksheet available
 from www.vikingroofspec.co.nz

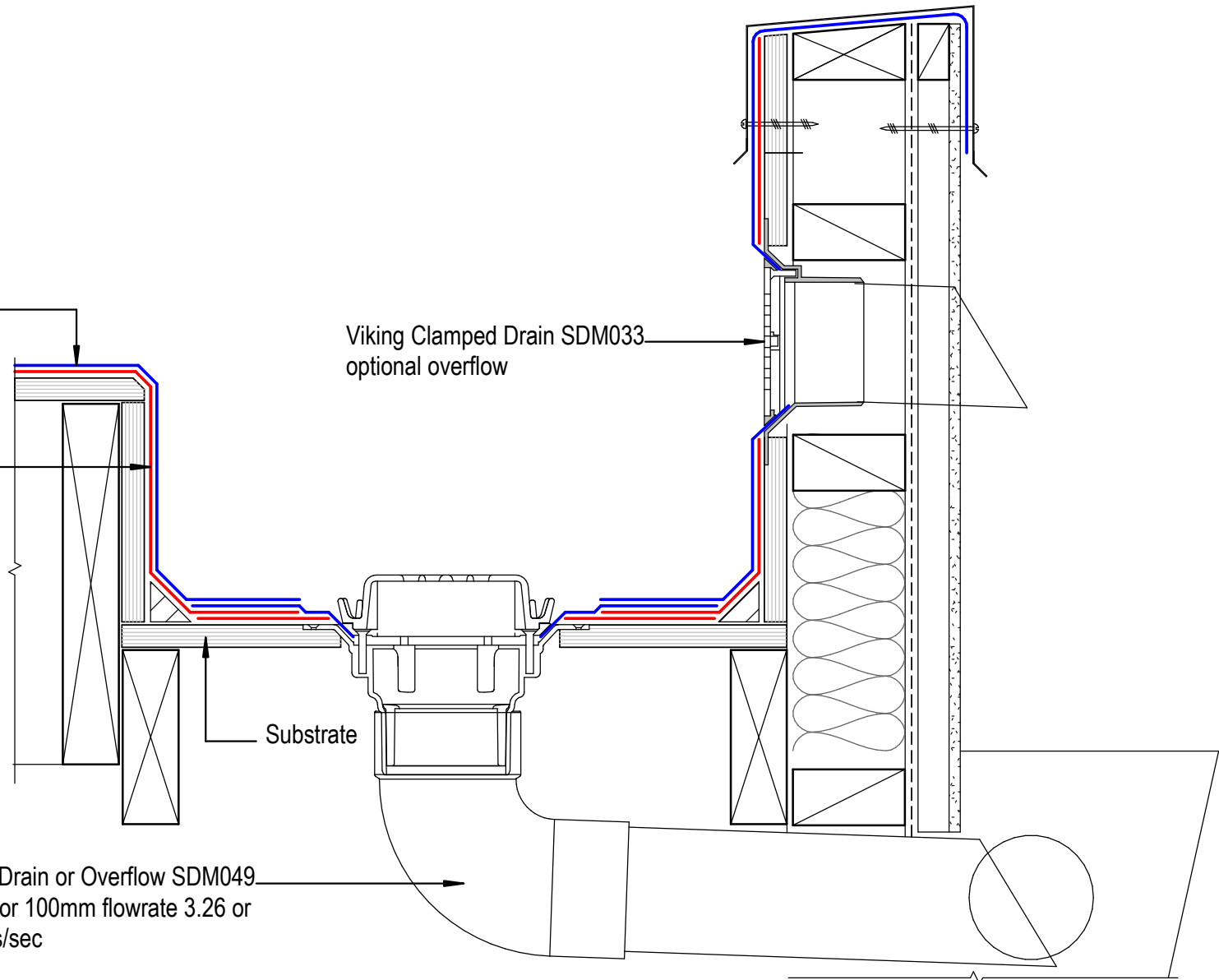
Viking Torch-on CAP sheet 4mm
 thick, install as per manufacturers
 instructions

Viking Torch-on BASE sheet 3mm
 thick, install as per manufacturers
 instructions

Viking Clamped Drain SDM033
 optional overflow

Substrate

Viking Drain or Overflow SDM049
 80mm or 100mm flowrate 3.26 or
 5.09 lts/sec



DRAWING TITLE

Viking Torch-On
 Internal Gutter_with outlet / overflow

NOTES:

- Viking Waterproof Membrane as notated can be Viking Gemini, Lybra or Phoenix Super.
- All fixings, cladding and structure are indicative only unless notated.

CodeMark

Cert # GM-CMNZ30092

Cert # BV-CMNZ70171

Viking Torch-On systems are CodeMarked

DRAWING

INFORMATION ONLY

Scale:	Date:	Drawn:	Viking
Not to Scale	23/11/2020		
Detail Ref:			VIK_TOR_052_GUTTWALL

Viking Roofspec
 Taking care of detail