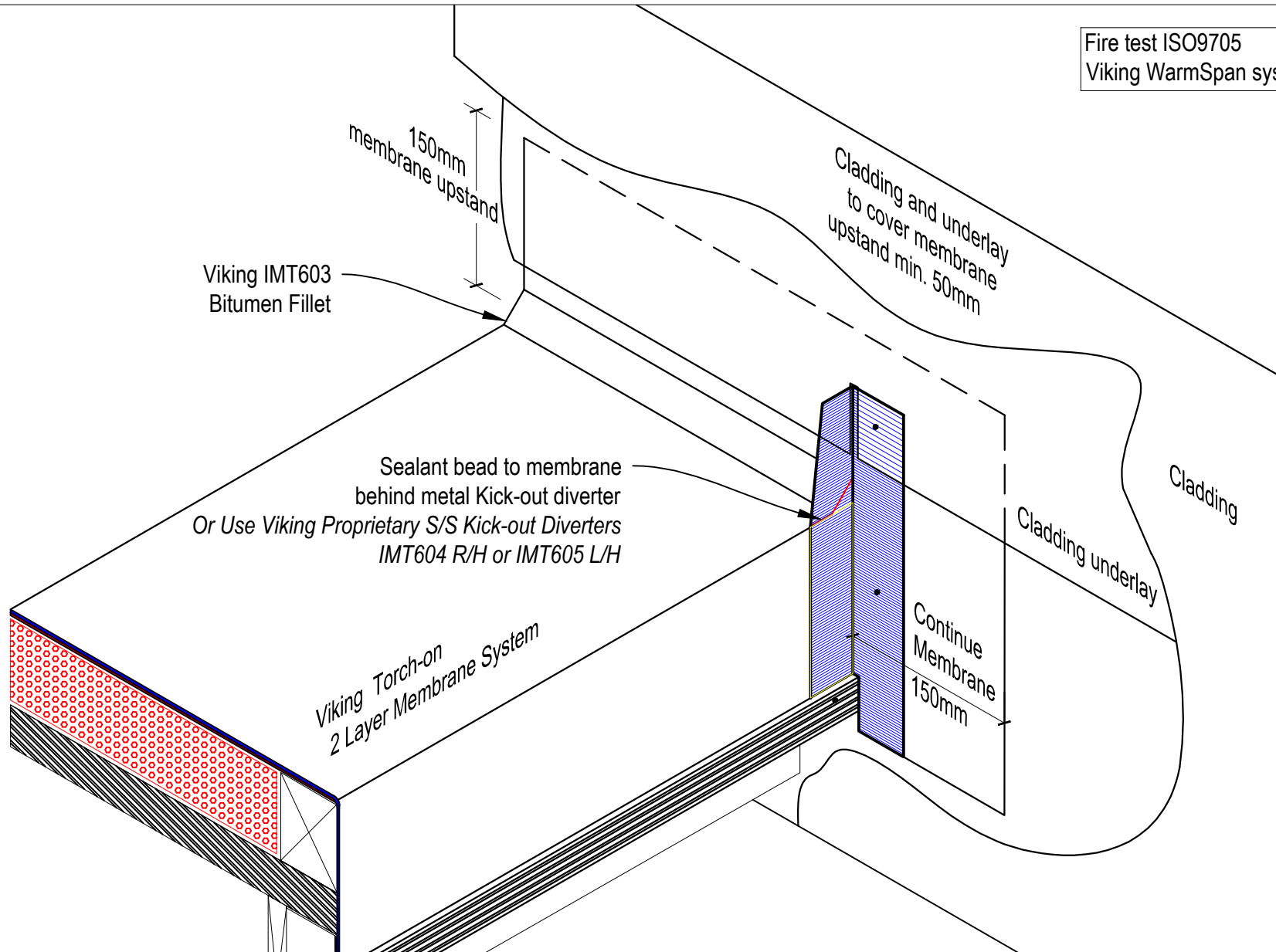


Fire test ISO9705
 Viking WarmSpan system is rated 1 - S



Viking IMT603
 Bitumen Fillet

150mm
 membrane upstand

Cladding and underlay
 to cover membrane
 upstand min. 50mm

Sealant bead to membrane
 behind metal Kick-out diverter
 Or Use Viking Proprietary S/S Kick-out Diverter
 IMT604 R/H or IMT605 L/H

Viking Torch-on
 2 Layer Membrane System

Continue
 Membrane
 150mm

Cladding underlay

Cladding

DRAWING TITLE

NOTES:

DRAWING STATUS

Viking WarmSpan with Viking Torch-on 2 layer membrane System
 Diverter Detail

Substrate Indicative Only

INFORMATION ONLY

Not to Scale	DATE 05/06/2018	Detail Ref.	ISSUE
DRAWN	Viking	VWS02VT	A

