

Viking Torch-on Cap sheet 4mm thick, install as per manufacturers instructions.

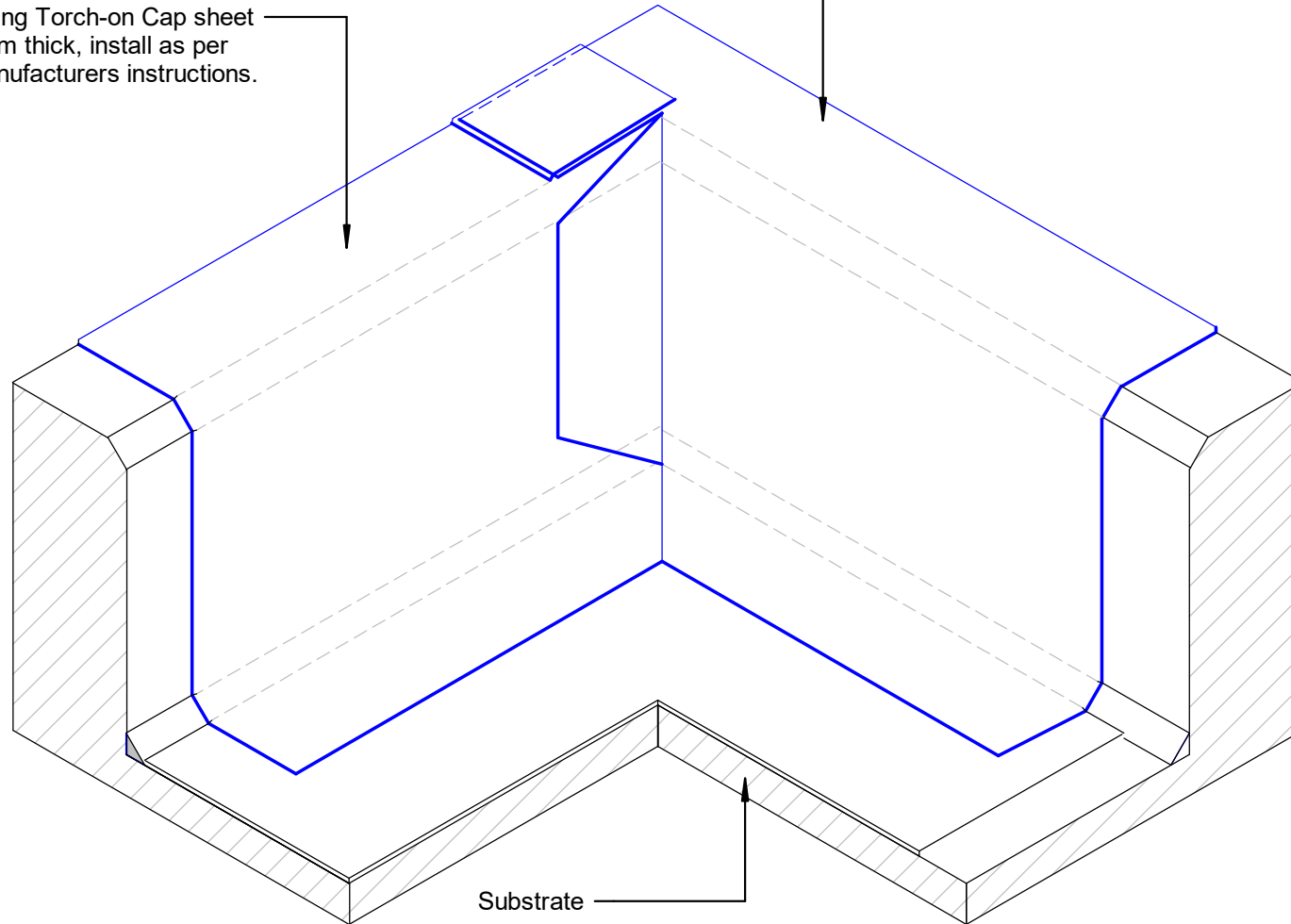
Viking Torch-on Cap sheet 4mm thick, install as per manufacturers instructions.

NOTE:
For clarification this detail is repeated for Base Sheet and Cap Sheet

NOTE:
Internal corner tabs for Cap Sheet Layer must be installed in the opposite direction to the Base Sheet Layer

NOTE:
Install a min. 140mm dia. Gusset to the Fillet at the corner prior to detailing the Base Sheet Layer

NOTE:
Substrate to comply with current Viking Roofspec Masterspec specification Substrate Checksheet available from www.vikingroofspec.co.nz



Substrate

DRAWING TITLE

Viking Torch-On
Intersection_Internal corner

NOTES:

- Viking Waterproof Membrane as notated can be Viking Gemini, Lybra or Phoenix Super.
- All fixings, cladding and structure are indicative only unless notated.



Viking Torch-On systems are CodeMarked

DRAWING

INFORMATION ONLY

Scale:	Date:	Drawn:	Viking
Not to Scale	23/11/2020		
Detail Ref: VIK_TOR_061_INTSICNR			