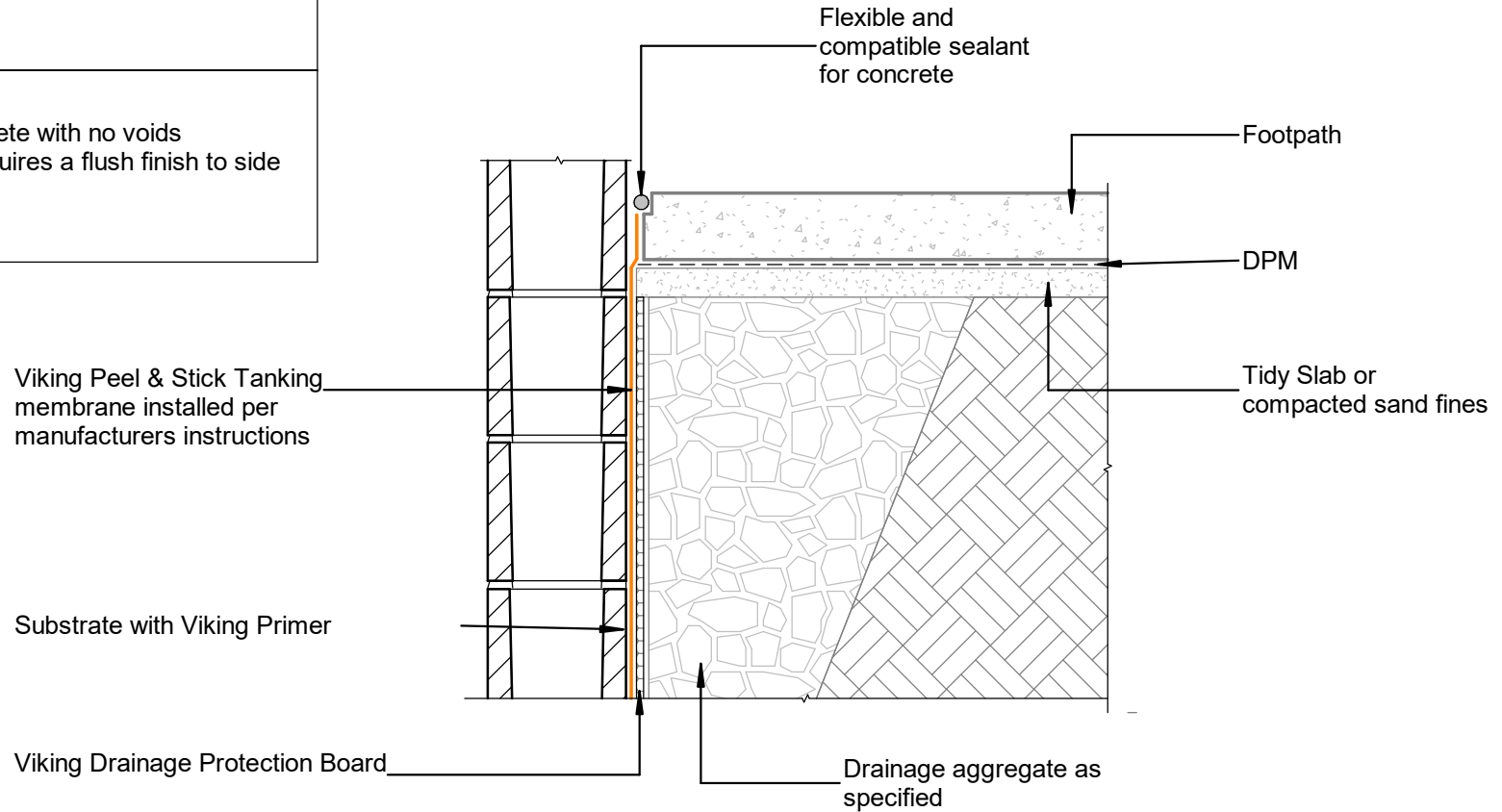


**NOTE:**

Substrate to comply with current Viking  
Roofspec Masterspec specification  
Substrate Checksheet available from  
[www.vikingroofspec.co.nz](http://www.vikingroofspec.co.nz)

**NOTE:**

Precast concrete with no voids  
Blockwork requires a flush finish to side  
of tanking



DRAWING TITLE

Viking Tanking - Peel & Stick  
Termination\_Footpath to Tanked Wall

NOTES:

- \* All fixings, cladding and structure are indicative only unless notated
- \* Drawings to be read with Viking Specifications

INFORMATION

Viking Tanking systems are  
BRANZ Appraised - 826

DRAWING

INFORMATION ONLY

Scale:	Date:	Drawn:	Viking
Not to Scale	01/03/2022		
Detail Ref:			<b>VIK_BGT_PS_36</b>